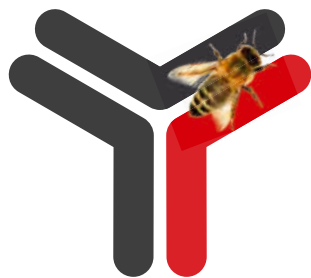


 **LEGA**







# PRODUCTS CATALOGUE

ENGLISH

# WHAT OUR PRODUCT CATALOGUE PROPOSES

## p. 9 BEEHIVES AND ACCESSORIES

- 10 DADANT BEEHIVE
- 12 OBSERVATION BEEHIVE
- 12 NUC BOX
- 13 FRAMES
- 13 WIRING
- 14 WAX FOUNDATIONS
- 16 QUEEN EXCLUDER
- 17 ACCESSORIES AND IRON HARDWARE FOR BEEHIVES
- 21 FEEDERS AND BEE ESCAPES



## p. 27 APIARY

- 28 SMOKERS
- 30 SWARM CATCHERS
- 31 HIVE TOOLS
- 32 POLLEN AND PROPOLIS COLLECTION
- 33 VENOM COLLECTION
- 33 ANTI-VARROA
- 35 NUTRITION
- 36 HONEYCOMBS COLLECTION AND HANDLING



## p. 47 UNCAPPING

- 48 UNCAPPING TRAYS
- 50 ACCESSORIES
- 51 UNCAPPING MACHINES
- 57 CAPPINGS HANDLING



## QUEEN BEE BREEDING

- MATING BEEHIVES
- GRAFTING TOOLS AND CUPS
- CAGES AND QUEEN MARKING KITS

## p. 23

- 24
- 24
- 25

## CLOTHING

- MESH VEILS
- YELLOW LINE
- WHITE LINE
- PROFESSIONAL LINE
- GLOVES

## p. 37

- 38
- 38
- 40
- 42
- 46

## EXTRACTORS

- MANUAL TANGENTIAL
- MANUAL RADIAL
- MANUAL TANGENTIAL/RADIAL
- MOTORISED TANGENTIAL
- MOTORISED RADIAL
- MOTORISED TANGENTIAL/RADIAL
- PROFESSIONAL RADIAL
- REVERSIBLES
- PROFESSIONAL LINES
- SPARE PARTS AND ACCESSORIES
- HONEY GATES AND FITTINGS

## p. 59

- 61
- 64
- 67
- 69
- 71
- 75
- 76
- 78
- 79
- 81
- 84







**p. 85 HONEY RIPENERS AND BLENDERS**

- 86 RIPENERS, STRAINERS AND SUPPORTS
- 89 PROFESSIONAL RIPENERS
- 89 FILTERS AND SPARE PARTS
- 91 BLENDERS



**p. 103 PACKAGING**

- 104 FILLING UP MACHINES
- 105 HONEY PACKAGING
- 108 AUTOMATIC FILLING UP LINES



**p. 115 ROYAL JELLY AND POLLEN**

- 116 VACUUM SUCKING MACHINE
- 116 ROYAL JELLY
- 116 JARS AND BOXES
- 117 POLLEN DRIERS



**HONEY TREATMENT**

- HONEY PUMPS 94
- ACCESSORIES FOR HONEY PUMPS 95
- HONEY TREATMENT 96
- MEASUREMENT TOOLS 99
- SUMP TANKS 99
- HONEY DRIERS 100

**p. 93**

**WAX PROCESSING**

- STEAM WAX MELTERS 110
- SOLAR WAX MELTERS 111
- STERILISERS, WAX MELTING TANKS AND TRAYS 113

**p. 109**

**DIDACTICS**

- BOOKS IN ITALIAN 120
- STICKERS 120
- PHOTOGRAPHIC MATERIAL 120

**p. 119**





BEEKEEPING SINCE 1937 

LEGA S.r.l. Beekeeping is an Italian company that has been protagonist in the beekeeping world since 1937, well known for its seriousness and deep knowledge of the subject, a skill that is invaluable in the design and production of equipment for beekeepers.

Ours is a family business that has existed for over eighty years and therefore has a long specific experience acquired in the midst of bees and beekeepers, essential for the correct design of the machines.

Armando Lega met apiculture almost by accident, in 1937, when a friend of his gave him two swarms of bees. The passion for this activity infected him immediately and he soon realized that he had become a beekeeper. He started as a beekeeper, then, over time and with the collaboration of the young son Giuseppe who joined the company in 1953, he became a professional beekeeper.

In those years we began to manufacture the first equipment for us and later for an ever-growing number of beekeepers, while also exercising the breeding of queen bees for about ten years, so as to respond to the needs of local beekeepers.

After completing his studies in 1959, a second son, Roberto, joined the business. The experience gained over the years between bees and beekeepers therefore allows us to manufacture the equipment more responsively to the evolution of the market, which is currently expanding considerably.

Thanks to our knowledge, we are able to respond flexibly to the requests of beekeepers, combining a production based mainly on the large series with the development of special machines, to meet more complex needs, such as the customisation of professional equipment.

Our company has very ambitious plans and to reach even wider horizons we can now take advantage of the new members of the **third generation Lega**, Gabriele and Chiara in the administration team and Fabrizio in the R&D department, integrated by the great professionalism of a **very valid team of young collaborators in the commercial and productive sectors**.

LEGA company can also boast the constant collaboration of 45 people engaged in different tasks, from production to shipping to **58 countries around the world**. All the energies are oriented to the continuous improvement of the quality, functionality and aesthetics of the product, so that the whole thing is worthy of bearing the title of **"MADE IN ITALY"**.



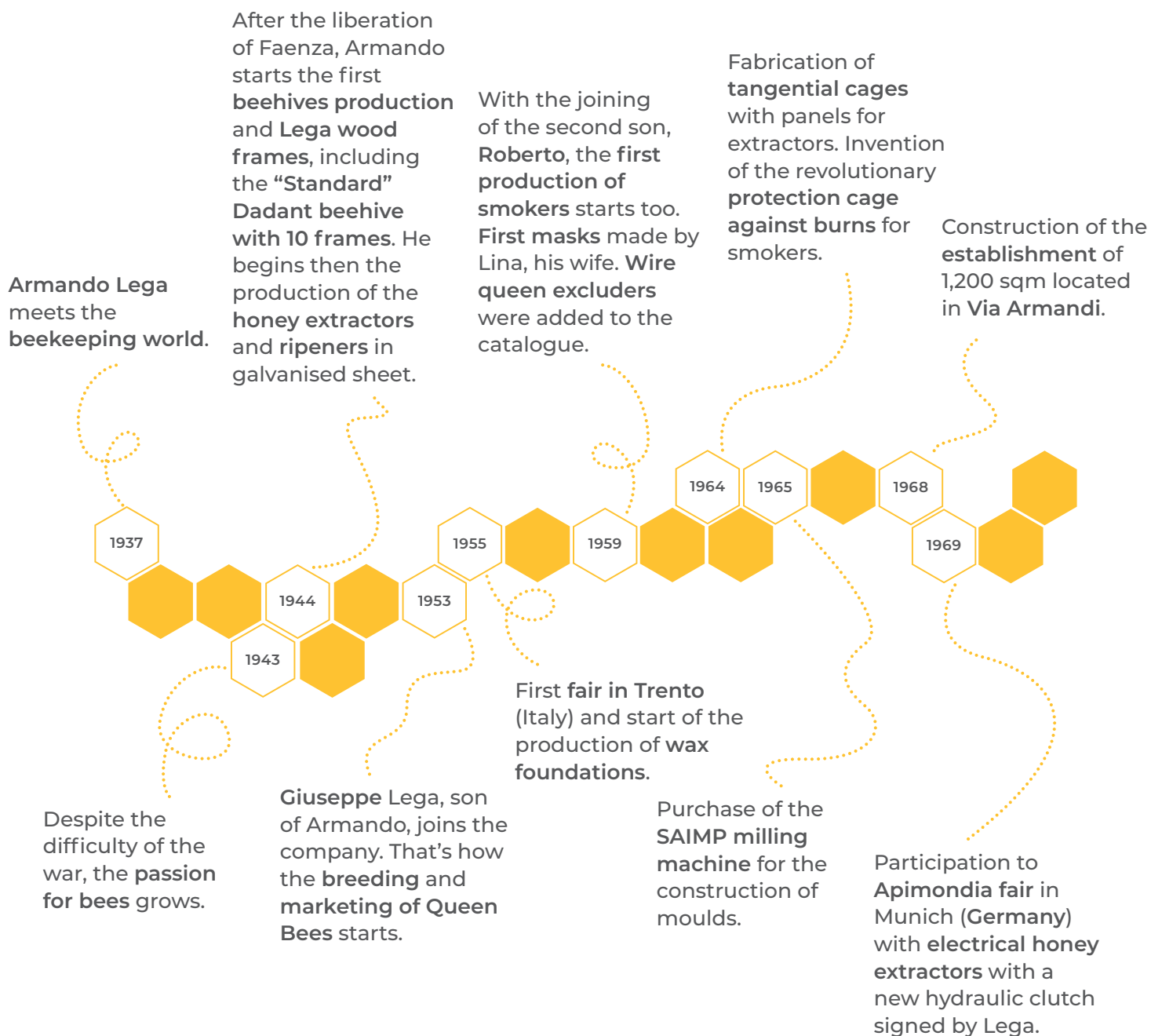


The **photovoltaic system**, inaugurated in March 2016 and built at the same time as the disposal of the Eternit roof, consists of 398 panels and has a power of **99.50 kWp**. It has a production of **110,000 kWh/year**, equal to **47.3 tons of CO2 not emitted into the atmosphere**. Since its commissioning, it has produced a total of 427,000 kWh, equal to **183 tons of CO2 not emitted into the atmosphere**. Annual electricity consumption has fallen by about 35%.

On average, we use 74,000 kWh / year in self-consumption and put 36,000 kWh / year back into the grid, making them available to the community as **sustainable energy**.



# SINCE 1937, FROM PASSION TO INDUSTRIALIZATION





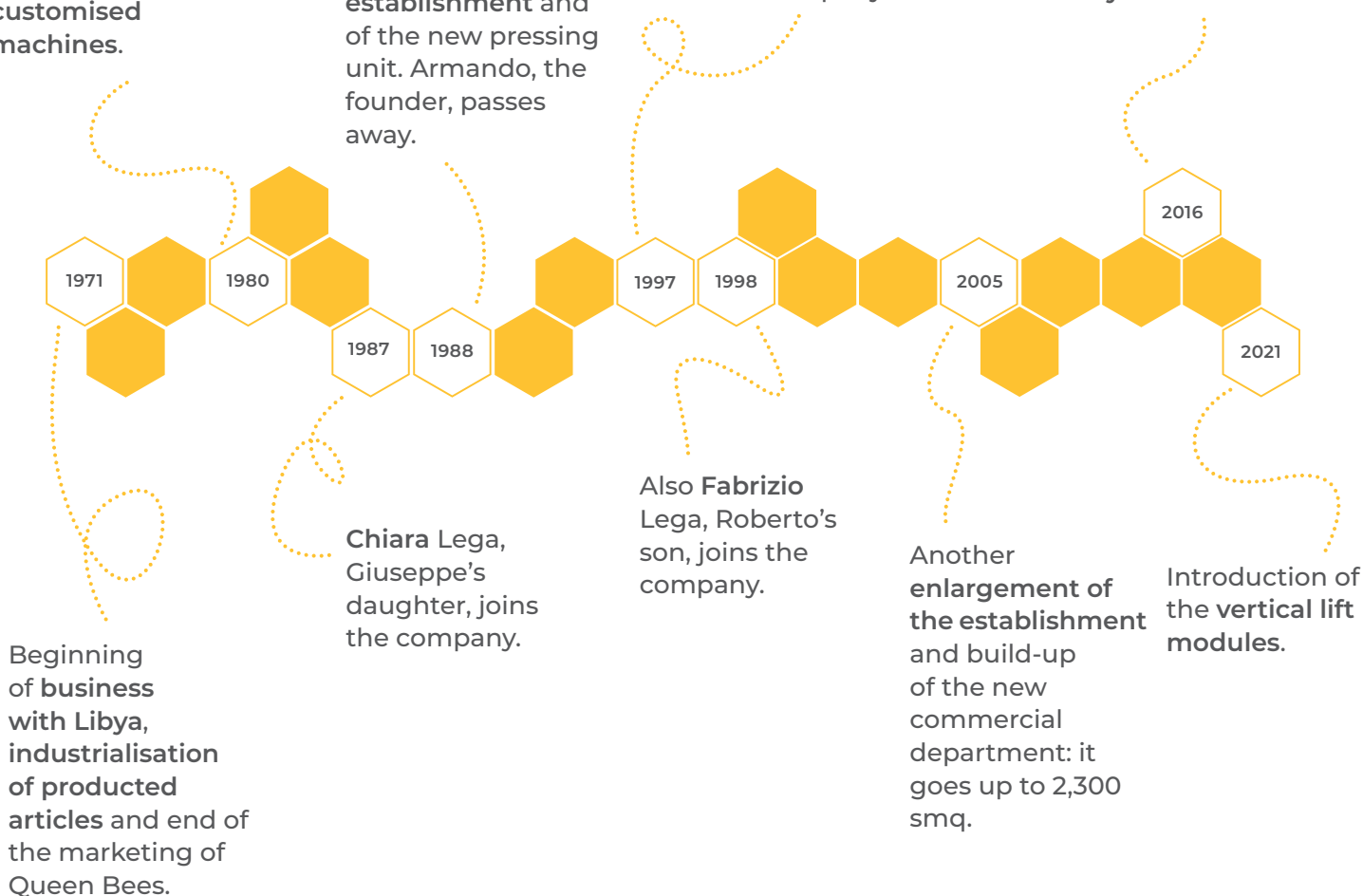


New bigger establishment in Via De Crescenzi divided into 3 departments (commercial, mechanical and joinery) with automatic customised machines.

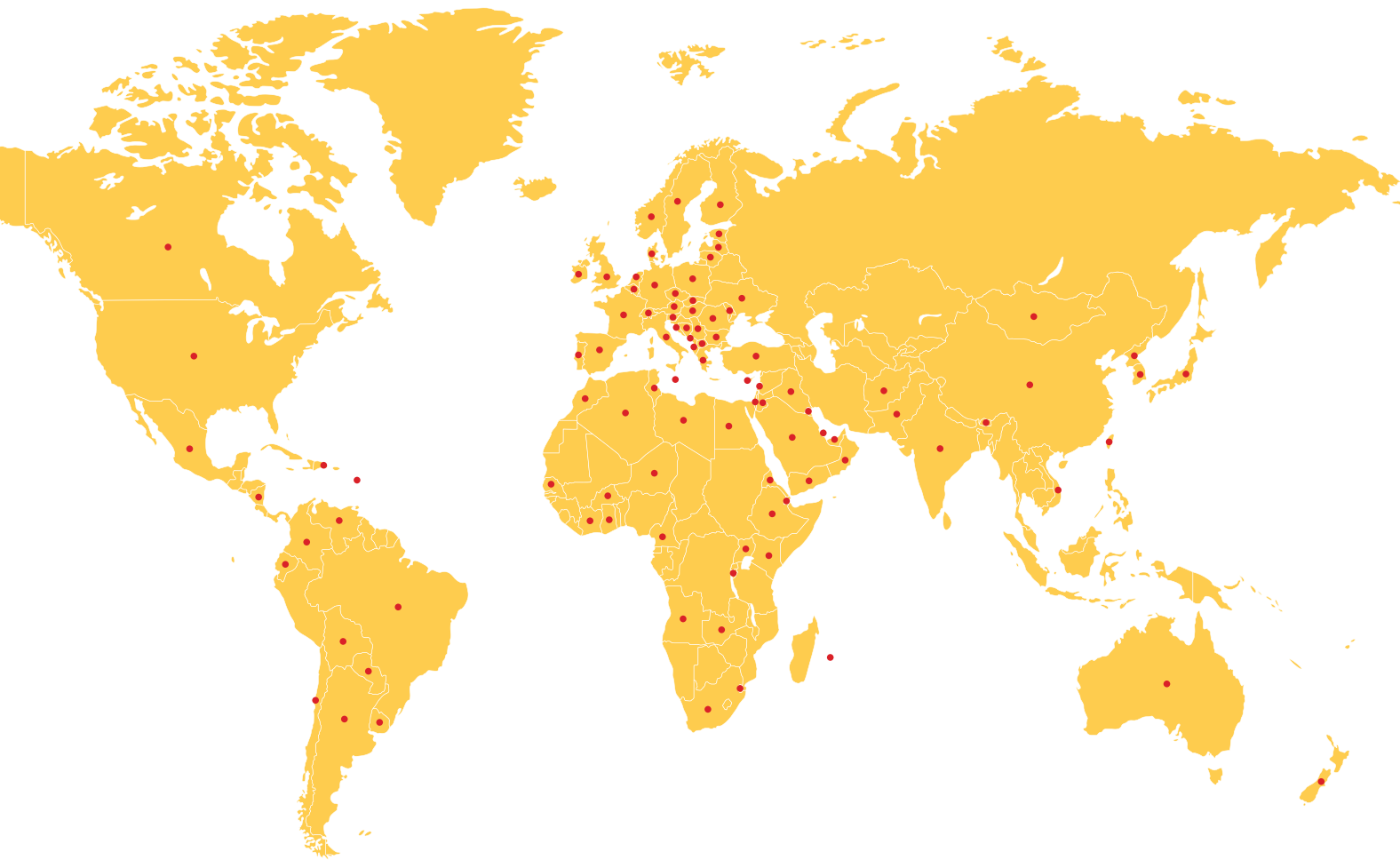
Enlargement of the establishment and of the new pressing unit. Armando, the founder, passes away.

Gabriele Lega, Chiara's brother, joins the company.

Introduction of photovoltaic system.



# AROUND THE WORLD



## EUROPE

ITALY  
ALBANIA  
AUSTRIA  
BELGIUM  
BOSNIA HERZEGOVINA  
BULGARIA  
CROATIA  
CYPRUS  
CZECH REPUBLIC  
DENMARK  
ESTONIA  
FINLAND  
FRANCE  
GERMANY  
GREAT BRITAIN  
GREECE  
HUNGARY  
IRELAND  
LATVIA  
LIECHTENSTEIN  
LITHUANIA  
LUXEMBOURG  
MACEDONIA  
MALTA  
MOLDOVA  
MONTENEGRO  
NETHERLANDS  
NORWAY  
POLAND  
PORTUGAL  
REPUBLIC OF SAN MARINO  
ROMANIA  
SERBIA  
SLOVAKIA  
SLOVENIA  
SPAIN  
SWEDEN  
SWITZERLAND  
TURKEY  
UKRAINE  
VATICAN CITY

## AFRICA

ALGERIA  
ANGOLA  
BURKINA FASO  
BURUNDI  
CAMEROON  
DJIBOUTI  
EGYPT  
ERITREA  
ETHIOPIA  
GHANA  
IVORY COAST  
KENYA  
LIBYA  
MOROCCO  
NIGERIA  
REUNION  
SENEGAL  
SOUTH AFRICA  
SWAZILAND  
TUNISIA  
UGANDA  
ZAMBIA

## NORTH AMERICA

CANADA  
DOMINICAN REPUBLIC  
GUADELOUPE  
MEXICO  
NICARAGUA  
UNITED STATES OF AMERICA

## SOUTH AMERICA

ARGENTINA  
BRAZIL  
CHILE  
COLOMBIA  
ECUADOR  
PARAGUAY  
TRINIDAD & TOBAGO  
URUGUAY  
VENEZUELA

## OCEANIA

AUSTRALIA  
FRENCH POLYNESIA  
NEW ZELAND

## ASIA

AFGHANISTAN  
BHUTAN  
CHINA  
INDIA  
IRAQ  
ISRAEL  
JAPAN  
JORDAN  
KUWAIT  
LEBANON  
MONGOLIA  
NORTH KOREA  
PAKISTAN  
QATAR  
SAUDI ARABIA  
SOUTH KOREA  
SULTANATE OF OMAN  
TAIWAN  
UNITED ARAB EMIRATES  
VIETNAM  
YEMEN



## BEEHIVES AND ACCESSORIES

The **modern beehive** is the home of the bees that the beekeeper uses for an easy control of the strength and the health of the colony that is housed in there that has a shape similar to a cube. The frames, on which the entire life of the hive is developed, are removable, therefore easily controllable, one by one.

The vast majority of the beehives produced are made of light, easy processable fir wood and above all transparent to avoid the harmful internal condensation of humidity.

We offer different types of beehives with all their accessories: the **observation beehive** with glass walls, the **frames**, **beehive stands**, **queen excluders**, **feeders**, **bee escapes** and **wax foundations**.

Wood has always been the most malleable building material, easily available and relatively cheap.

It has the advantage of lightness, porosity, resinousness that preserves it over time and is workable with relatively simple technologies.

We manufacture beehives in **DADANT** sizes, both from **10 frames** called **STANDARD** (the most common) and in the **LANGSTROTH** sizes too.

DADANT BEEHIVE	10
OBSERVATION BEEHIVE	12
NUC BOX	12
FRAMES	13
WIRING	13
WAX FOUNDATIONS	14
QUEEN EXCLUDER	16
ACCESSORIES AND IRON HARDWARE FOR BEEHIVES	17
FEEDERS AND BEE ESCAPES	21

## BEEHIVES AND ACCESSORIES





# BEEHIVES AND ACCESSORIES

## DADANT BEEHIVE



**0050L**

**"STANDARD" 10 FRAMES DADANT BEEHIVE** ochre painted with fixed grid ground, **only brood chamber**, inner cover, outer flat cover and plastic entrance blocker, with **mounted iron hardware** (door, handles, angles, pinwheels).



**0051L**

**"STANDARD" 10 FRAMES DADANT BEEHIVE** ochre painted with fixed grid ground, **complete with brood chamber and super**, inner cover, outer flat cover, plastic entrance blocker, with **mounted iron hardware** (door, handles, angles, pinwheels) and **all the brood and super frames wired**.



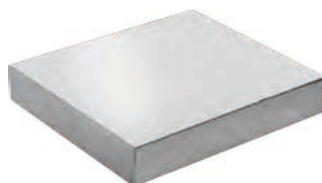
**0052L**

**"STANDARD" 10 FRAMES DADANT BEEHIVE** ochre painted with fixed grid ground, **complete with brood chamber and super**, inner cover, outer flat cover, plastic entrance blocker, with **mounted iron hardware** (door, handles, angles, pinwheels) and **all the brood and super frames with wax foundations**.



**0081**

**"STANDARD" SUPER 9 DADANT FRAMES** ochre painted with spacers - 430x500x170 mm.



**0100**

**OUTER FLAT COVER** for "standard" 10 frames Dadant beehive - inner dimensions 478x548x93 mm.



**0040250**

**INNER COVER WITH WIDE FRAME** for "standard" 10 frames Dadant beehive - 430x500x65 mm.



**STP42**

**PLASTIC TAP FOR INNER COVER** - Ø 42 mm.



**0149**

**"KUBIK" 6 FRAMES DADANT BEEHIVE** grey painted with fixed grid ground, **only brood chamber**, inner cover, with 4 position hive entrance and outer flat cover in galvanised metal covering.



**0149200**

**OUTER FLAT COVER** for "Kubik" 6 frames Dadant beehive - 300x513x93 mm.



**0085**

**"KUBIK" SUPER 5 FRAMES DADANT** grey painted, for "Kubik" 6 Dadant frames beehive - 280x500x170 mm.





## DADANT BEEHIVE



**0140**

**"KUBIK" 10 FRAMES DADANT BEEHIVE** blue painted with fixed grid ground, **only brood chamber**, inner cover, outer flat cover, with **mounted iron hardware** (iron door, handles, angles, pinwheels).



**0141**

**"KUBIK" 10 FRAMES DADANT BEEHIVE** blue painted with fixed grid ground, **complete with brood chamber and super**, inner cover, outer flat cover, with **mounted iron hardware** (iron door, handles, angles, pinwheels) and **all the brood and super frames wired**.



**0142**

**"KUBIK" 10 FRAMES DADANT BEEHIVE** blue painted with fixed grid ground, **complete with brood chamber and super**, inner cover, outer flat cover, with **mounted iron hardware** (iron door, handles, angles, pinwheels) and **all the brood and super frames with wax foundations**.



**0136**

**UNASSEMBLED "KUBIK" BEEHIVE** complete with package containing iron hardware.



**1150**

**"TONELLI" SPECIAL 10 FRAMES BEEHIVE** light oak painted, **only brood chamber**, double slope outer cover and **all the frames with wax foundations**.



**1160**

**"TONELLI" SPECIAL 9 FRAMES SUPER** light oak painted. It's the same super of the "standard" 10 frames Dadant beehive so the honey can be easily extracted - 430x500x170 mm.



**1150900**

**BROOD FRAME** for "Tonelli" special beehive with wax foundations (ref. 1150).



**1150920**

**WOOD VERTICAL EXCLUDER** for "Tonelli" special beehive (ref. 1150).



# BEEHIVES AND ACCESSORIES

## OBSERVATION BEEHIVE



**1210C**

**GLASS OBSERVATION 10 FRAMES DADANT BEEHIVE** purple painted, **only brood chamber**, with glasses on each side, protective door, inner cover and double slope outer cover.



**1230C**

**GLASS OBSERVATION 10 FRAMES DADANT SUPER** purple painted, with glasses on each side and protective doors.



**1240C**

**GLASS OBSERVATION BEEHIVE FOR ONE BROOD FRAME AND ONE SUPER FRAME** This special beehive with transparent walls is used for teaching sessions, to show students the structure of a beehive and the life of bees, or for setting up promotional showcases, so that customers can see your bees and honeycombs live. The beehive is equipped with two glass walls framed and removable. It is very suitable for the setting up of promotional showcases for the sale of honey. If the beehive is kept outdoors, it should be fixed to a stable support to prevent overturning due to wind blows.

It is also equipped with two removable wooden doors to cover the glass walls because the bees do not accept exposure to light for a short time. Between the brood frame and the super frame there is the queen excluder. In the upper part there is the feeder, closed by the lid.

## NUC BOX



**0521**

**NUC BOX IN WOOD AND MASONITE for 5 Dadant brood frames** with spacers, adjustable lever closure, lid and grid ground in order to facilitate the air circulation during the carriage - **hole**  $\varnothing$  20 mm.



**0522**

**NUC BOX IN WOOD AND MASONITE for 6 Dadant brood frames** with spacers, adjustable lever closure, lid and grid ground in order to facilitate the air circulation during the carriage - **hole**  $\varnothing$  30 mm.



**0538**

**NUC BOX'S AERATOR** with metal frame in order to facilitate the air circulation during the carriage.



## NUC BOX



**0534**

**GALVANISED OUTER COVER** with four folds with deep and strong border for polystyrene nuc box - 281x521x105 mm.

**0536200**

**LID** for nuc box for 6 Dadant brood frame.

**0537**

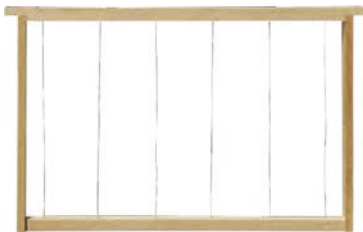
**NUC BOX FEEDER** made by high density polystyrene with two different compartments: one for sugar syrup, the other for sugar candy: it contains 1 kg sugar candy and 1,5 lt sugar syrup.

**0536**

**NUC BOX IN HIGH DENSITY POLYSTYRENE** for 6 Dadant brood frames with airy ground. Density: 80 g/l  $\pm$  10%.

**2070300**

## FRAMES



**0641**

**DADANT BROOD FRAME** wired.



**0661**

**DADANT BROOD FRAME** wired with mounted wax foundations.



**0780**

**"BATICADRE" DADANT SUPER FRAME** in plastic, partially drawn, without wax foundations.



**0741**

**DADANT SUPER FRAME** wired.



**0761**

**DADANT SUPER FRAME** wired with mounted wax foundations.

## WIRING



**3090**

**METAL EYELETS** to strenghten the holes in the frames and prevent the wire from going into the wood -  $\varnothing$  3 mm (1000 pieces package, with inserter).



**3105**

**FRAME TINNED WIRE** to reinforce the wax foundation, sold with 150 gr reel with dispenser.



**3160**

**WIRE STAINLESS STEEL**  $\varnothing$  0,45 mm, 2 skeins of 50 gr each.





## BEEHIVES AND ACCESSORIES

### WIRING



**3180**

**WIRE STAINLESS STEEL** Ø 0,45 mm with 500 gr reel.



**3200**

**WIRE STAINLESS STEEL** Ø 0,45 mm with 1000 gr reel.



**3220**

**WIRE UNROLLER** Ø 0,45 mm with 500 and 1000 gr reel and heavy metal base.



**3240**

**WIRE CRIMPER** with plastic handle and tempered steel little wheels to corrugate the wire in the frame after the embedding operation.



**3262**

**ELECTRIC WIRE EMBEDDER** with transformer system for 220V-24V.



**3280**

**WOODEN EMBEDDING BOARD** on an inclined panel to facilitate the embedding operation.

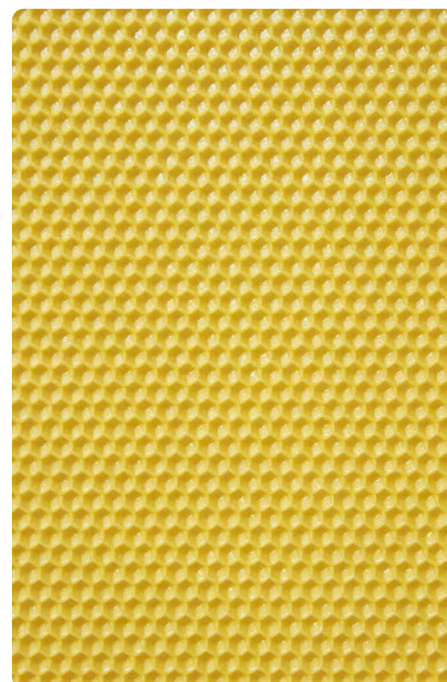
### WAX FOUNDATIONS

The beeswax foundation is a wax sheet on which the hexagonal imprints of the cells have been impressed by casting or by pressure in the dimensions that bees usually build in nature. The beeswax foundation is fixed by the beekeeper on the central axis of the frame and then entrusted to the bees to complete it by transforming it into a honeycomb: they partly use the wax from the sheet itself and partly produce new wax until the cells are completely built.

Our wax foundations are all made with pure sterilised beeswax.

To avoid possible deformation due to the summer heat and the sudden harvest of nectar, they are manufactured in the previous year so that the winter cold gives them a precious temperature.

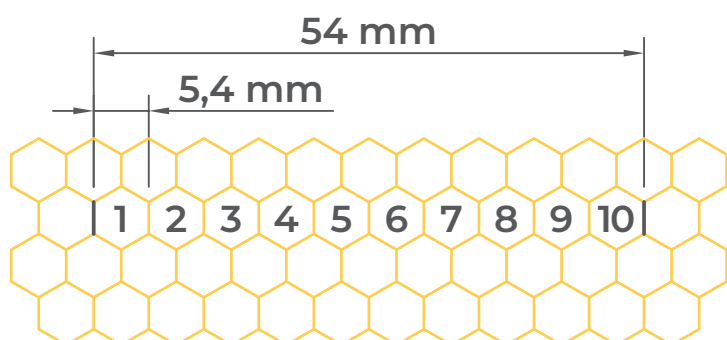
Our production program includes both **LAMINATED BEESWAX FOUNDATION** and **CAST MOULD BEESWAX FOUNDATION**. The first type is obtained by lamination, by printing a smooth wax sheet between two rollers with a surface bearing, in negative, the impressions of the hexagonal cells; the second is obtained by pouring melted wax through two rollers that have the same faceted surface. The wax thus solidifies very quickly and in a single operation the "melted" wax foundation is obtained which, however, due to its sudden cooling, exhibits considerable fragility at low temperatures. It is a good idea to cool the melted wax foundation when you want to weld on the wires at room temperature below 15°C.







## WAX FOUNDATIONS



The cell of the beeswax foundation obtained has the measure of 5,4 mm measured on the double apothem, which corresponds to a number of cells of about 800 cells/dm<sup>2</sup>, calculated on the two faces. For easier reading, 10 cells (54 mm) are measured.

PAGE WITH  
MULTIMEDIA CONTENTS:  
SCAN THE QR CODE



WE WORK YOUR WAX FOR A  
MINIMUM OF 200 KG

**1000**

**LAMINATED WAX FOUNDATION** Dadant brood frame with sheet inbetween - 410x260 mm (roughly 10 per kg, available in 5 kg box).

**1010**

**LAMINATED WAX FOUNDATION** Dadant super frame with sheet inbetween - 410x130 mm (roughly 20 per kg, available in 5 kg box).

**1060**

**CAST TYPE RIGID WAX FOUNDATION** Dadant brood frame with sheet inbetween - 410x260 mm (roughly 10 per kg, available in 5 kg box).

**1061**

**CAST TYPE RIGID WAX FOUNDATION** Dadant brood frame with sheet inbetween - 410x260 mm (roughly 10 per kg, available in 1 kg box).

**1065**

**CAST TYPE RIGID WAX FOUNDATION** Dadant brood frame without sheet inbetween - 410x260 mm (roughly 10 per kg, available in 5 kg box).

**1075**

**CAST TYPE RIGID WAX FOUNDATION** Dadant super frame without sheet inbetween - 410x130 mm (roughly 20 per kg, available in 5 kg box).

**1040**

**LAMINATED WAX FOUNDATION** Langstroth frame with sheet inbetween - 420x200 mm (roughly 12 per kg, available in 4 kg box).

**1080**

**CAST TYPE RIGID WAX FOUNDATION** Langstroth frame with sheet inbetween - 420x200 mm (roughly 12 per kg, available in 4 kg box).

**1090**

**LAMINATED WAX FOUNDATION WITH DRONE CELL** Dadant brood frame - 410x260 mm (it is not possible to estimate the sheets per kg because the weight of the drone cell can change - available in 5 kg box).

**7360093**

**CLEANING PRODUCT** for the machine of the production of wax foundations (see page 114).





# BEEHIVES AND ACCESSORIES

## QUEEN EXCLUDER

### WIRE QUEEN EXCLUDER in drawn and galvanised steel.



**2200**

Dadant 430x500 mm.

**2220**

Langstroth 420x510 mm.

**WIRE QUEEN EXCLUDER WITH  
WOODEN FRAME** in drawn and  
galvanised steel, it allows the bee to have  
space between the excluder and the  
super frames.

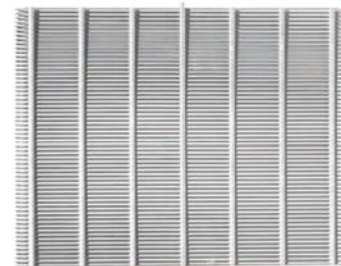


**2300**

Dadant 430x500 mm.

**2320**

Langstroth 420x510 mm.



**2300200**

**WIRE QUEEN EXCLUDER** for  
wooden frame - Dadant 430x500 mm.



**2300300**

**WOODEN FRAME FOR QUEEN  
EXCLUDER** - Dadant 430x500 mm.



**2240**

**WIRE QUEEN EXCLUDER** in drawn  
and galvanised steel - Dadant 500x500 mm.



**2340**

**WIRE QUEEN EXCLUDER** in  
drawn and galvanised steel **with  
wooden frame** - Dadant 500x500 mm.

**VERTICAL PARTITION**  
metal queen excluder in wooden frame.



**ESC270490**

**WIRE QUEEN EXCLUDER** in drawn  
and galvanised steel for 6 frames nuc  
box - 270x490 mm.



**2360**

Dadant 470x332 mm.

**2362**

Langstroth 480x255 mm.



**2360P**

**VERTICAL PARTITION** plastic queen  
excluder - Dadant 473x343x20 mm.



# BEEHIVES AND ACCESSORIES



## QUEEN EXCLUDER



**2365**

**SCRAPER WITH NOTCHED EDGE** to clean the excluders.



**2370**

**CONFINEMENT CAGE** for wired queen excluder, to biologically fight the Varroa.



**2373**

For 1 **Dadant brood** frame - 447x303x42 mm.

**2375**

For 1 **Langstroth** frame - 460x235x42 mm.

## ACCESSORIES AND IRON HARDWARE FOR BEEHIVES



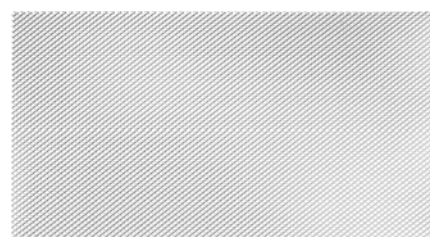
**0040300**

**WOODEN ENTRANCE BLOCKER FOR TRANSHUMANCE** for "standard" beehive.



**0040295**

**PLASTIC ENTRANCE BLOCKER FOR TRANSHUMANCE** for "standard" beehive.



**1740**

**NET FOR ENTRANCE BLOCKER FOR TRANSHUMANCE** for "standard" beehive - 200x370 mm.



Other colors available on request.

**SPECIAL PAINT FOR BEEHIVES**

**8141**

Ochre - 1 kg confection.

**8142**

Blue - 1 kg confection.

**8143**

Green - 1 kg confection.



**3390**

**STAINLESS STEEL FRAME HOLDER** it has to be hung externally up to one side of the beehive to hold the first extracted frames.



**0050123**

**ANTI-VARROA BOTTOM METAL TRAY** for "Kubik" and "standard" beehive - 348x440 mm.



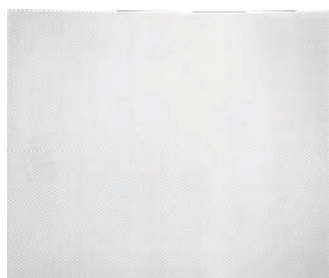
**0070123**

**ANTI-VARROA BOTTOM METAL TRAY** for "standard" beehive slide-in ground - 381x470 mm.



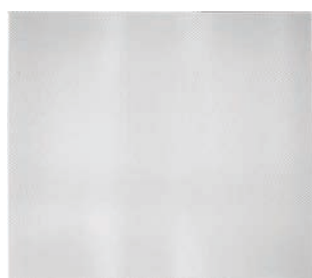
# BEEHIVES AND ACCESSORIES

## ACCESSORIES AND IRON HARDWARE FOR BEEHIVES



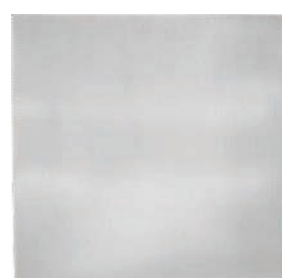
**0050122**

**RAW MESH** for "Kubik" and "standard" Dadant beehive ground - 380x435 mm.



**0070122**

**RAW MESH** for "standard" Dadant beehive ground - 378x457 mm.



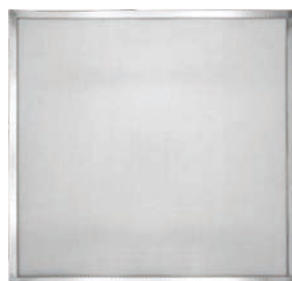
**0370122**

**RAW MESH** for 12 frames Dadant beehive - 445x440 mm.



**0070125**

**FRAMED MESH** for "standard" Dadant beehive slide-in ground - 378x458 mm.



**0370125**

**FRAMED MESH** for 12 frames Dadant beehive - 445x458 mm.



**0560**

**WOODEN BEEHIVE STAND** unassembled, painted - 2000x430x300 mm.



**0580**

**PLASTIC NUMBERS** for hive identification (set of 21 numbers).



**0590100**

**BRANDING IRON FOR MARKING BEEHIVES** it gives the beekeeper the chance to personalise the beehives with his own name and to fight hive-theft too. It is sold complete with gas burner and its pipe but without pressure regulators and numbers (**max 5 characters**).



**059100\***

**CHARACTERS** in milled brass (\*specify the **LETTER** and/or the **NUMBER**).



**0900**

**FRAME GRIP** in stainless steel.



**0920**

**WOODEN VERTICAL PARTITION** for **Dadant brood frames** to reduce the internal width of the beehive.



**1640**

**ANGLE SCREW** to fix the entrance blocker for transhumance - 21x40 mm.



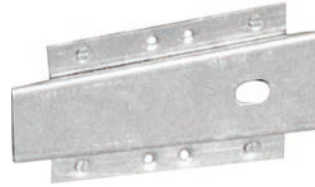


## ACCESSORIES AND IRON HARDWARE FOR BEEHIVES



**1660**

**SCREW WITH WING NUT** to fix the rotating metal disc.



**1670**

**HIVE CONNECTING WEDGE** to assemble the parts of the beehive.



**1675**

**HIVE SPRING FASTENER** for beehives with slide-in ground.



**1675X**

**HIVE SPRING FASTENER** in **stainless steel** for beehives with slide-in ground.



**1681**

**GALVANISED METAL CORNER** to prevent sliding movements between brood and super (100 pieces package).



**1690**

**METAL BACKING FOR HIVE TOOL** in galvanised sheet.



**1700**

**GALVANISED PROTECTION SHEET** for "standard" Dadant beehive's entrance - 430 mm.



**1701**

**GALVANISED PROTECTION SHEET** for "standard" Dadant beehive's entrance - 435 mm.



**1780**

**PRE-FOLDED GALVANISED SHEET** for "standard" Dadant beehive's lid - 475x545x107 mm.



**1821**

**GALVANISED FRAME SPACER** 383-8-25 mm



**1822**

**GALVANISED FRAME SPACER** 383-9-25 mm



**1823**

**GALVANISED FRAME SPACER** 383-10-25 mm



**1827**

**GALVANISED FRAME SPACER** 448-10-25 mm



**1828**

**GALVANISED FRAME SPACER** 448-11-25 mm



**1829**

**GALVANISED FRAME SPACER** 448-12-25 mm



# BEEHIVES AND ACCESSORIES

## ACCESSORIES AND IRON HARDWARE FOR BEEHIVES



**1843**  
GALVANISED "MUSSI" SPACER  
383-9-25 mm



**1845**  
GALVANISED SPACER 383-10-25  
mm in sturdy galvanised steel to be  
fixed on the lower part of the beehive. It  
stops the frames from swinging during  
transhumance.



**1850**  
PLASTIC "HOFFMAN" SPACERS  
to self space every kind of frame.



**1880**  
HEAVY HANDLE in  
galvanised steel for the  
beehive (with screws).



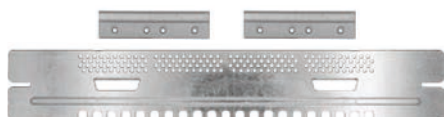
**1881**  
LIGHT HANDLE in  
galvanised steel for the  
beehive (without screws).



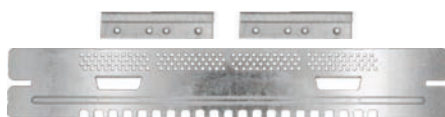
**1880300**  
SCREW FOR HANDLES



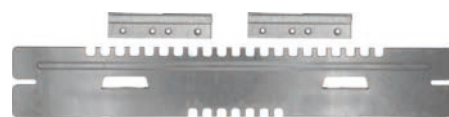
**1920003**  
RUNNER for toothed  
entrance reducer in  
galvanised sheet.



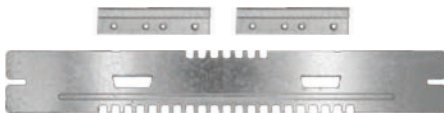
**1903**  
TOOTHED AND HOLED  
ENTRANCE REDUCER in  
galvanised sheet with runners and  
handles - 380 mm (10 frames).



**1907**  
TOOTHED AND HOLED  
ENTRANCE REDUCER in  
galvanised sheet with runners and  
handles - 445 mm (12 frames).



**1923**  
TOOTHED ENTRANCE REDUCER  
in galvanised sheet with runners and  
handles - 380 mm (10 frames).



**1927**  
TOOTHED ENTRANCE REDUCER  
in galvanised sheet with runners and  
handles - 445 mm (12 frames).



**1940**  
NUC METAL ENTRANCE in  
galvanised sheet - 121 mm.



**1920381A1**  
TOOTHED ENTRANCE REDUCER  
in stainless steel with extended eyelets  
- 380 mm (10 frames).



**1920001A1**  
RUNNER for toothed  
entrance reducer in stainless  
steel.



**1945**  
ROTATING PLASTIC  
DISC for nuc entrance - Ø 80  
mm.



**1960**  
ROTATING METAL  
4-POSITION DISC  
applicable to the inner cover,  
it gives the chance to use the  
plastic feeder or the aeration -  
Ø 125 mm.



**1971**  
GALVANISED METAL  
SEAL with adjustable lever.



## FEEDERS AND BEE ESCAPES

**PLASTIC DIVISION BOARD  
FEEDER with net.**



**2000**

Dadant brood frame size - 2,6 lt.

**2010**

Langstroth frame size.



**2020**

**PLASTIC DIVISION BOARD FEEDER**  
Dadant super frame size with net - 1,4 lt.

**2060300**



**2060**

**ROUND PLASTIC TOP FEEDER**  
- 2 lt.



**2060300**

**PLASTIC GLASS** for round plastic  
feeders - 2 lt - Ø 102 mm (ref. 2060).

**2070300**



**2070**

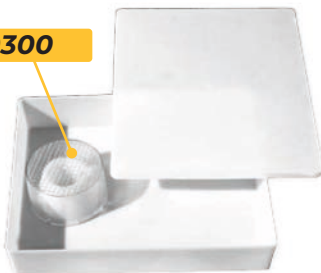
**SQUARE PLASTIC TOP FEEDER -**  
1,5 lt - 260x260x40 mm.



**2070300**

**PLASTIC GLASS** for square plastic  
feeders - 1,5 lt - Ø 98 mm (ref. 2070).

**2080300**



**2080**

**JUMBO SQUARE PLASTIC TOP  
FEEDER** with Ø 40 mm hole - 6 lt -  
330x400x70 mm.



**2080300**

**PLASTIC CAPPING** for Jumbo  
square feeder - Ø 130 mm (ref. 2080).



# BEEHIVES AND ACCESSORIES

## FEEDERS AND BEE ESCAPES

The bee escape has been introduced in beekeeping to free the supers full of honey from all the bees that guard it, after it has been discovered that the bees do not stay permanently in the super but they move from the brood to the super and vice versa.

The bee escape allows the bees to descend towards the brood but prevents the return to the super. It is mounted in the center of a tablet that completely separates the two spaces, forcing the bees to pass only through the descent channels. The bees are initially confused, then they find the passage and begin to quickly leave the super.

In this way the beekeeper can take the super away with tranquility, leaving the bee escape in place like an inner cover. The complete bee escape is then formed by the tablet with peripheral case of appropriate thickness that respects the necessary bee space, from the bee escape itself that is fixed by pressure to the center of the tablet and from the return valve that is opened after the super, containing the extracted frames, has been put back in place. This allows the bees of the family to take back possession of the super but avoids the danger of looting caused by the smell of frames with the honey left.



**2090**

**PLASTIC STAR-SHAPED BEE ESCAPE** with 8 exits to be fixed on the inner cover with rivets -  $\varnothing$  260 mm.



**2095**

**DIAMOND-SHAPED BEE ESCAPE** with 2 exits.



**2096**

**DIAMOND-SHAPED BEE ESCAPE** with 4 exits.



**2100**

**ROUND METAL BEE ESCAPE** only metal part to be press fitted on the inner cover in a hole -  $\varnothing$  120 mm (external) -  $\varnothing$  85 mm (internal).

**ROUND METAL BEE ESCAPE "LEGA"** assembled on a framed inner cover with wooden frame and gate valve.



**2110**

**ROUND PLASTIC BEE ESCAPE "LEGA"** only plastic part -  $\varnothing$  120 mm (external) /  $\varnothing$  115 mm (internal).



**2100**

**PLASTIC STAR-SHAPED BEE ESCAPE** with 8 exits, assembled on a framed inner cover with wooden frame and gate valve -  $\varnothing$  260 mm.



**2120130**

**GATE VALVE FOR BEE ESCAPE** to allow the bees to descend towards the brood and prevent the return to the super.

**2120**

**Dadant** - 430x500 mm -  $\varnothing$  120 mm.

**2140**

**Langstroth** - 420x510 mm -  $\varnothing$  120 mm.



**2090**



**2100**



**2090**

**2128**

**Dadant** - 430x500 mm.

**2148**

**Langstroth** - 420x510 mm.

**2160**

**ROUND METAL BEE ESCAPE** assembled on framed inner cover 500x500 mm with wooden frame and gate valve -  $\varnothing$  120 mm.

**2168**

**PLASTIC STAR-SHAPED BEE ESCAPE** with 8 exits, assembled on a framed inner cover 500x500 mm with wooden frame and gate valve -  $\varnothing$  260 mm.





## QUEEN BEE BREEDING

The **breeding of queen bees** is a booming business: it allows you to increase the number of colonies, to improve the characteristics of the colonies and to promptly resolve any issues. It also allows you to improve disease resistance and adaptation to the environment.

To better develop this activity we offer a series of specific products such as **mating bee hives**, **grafting tools**, **domes** and **queen marking paint**.



MATING BEEHIVES	24
GRAFTING TOOLS AND CUPS	24
CAGES AND QUEEN MARKING KITS	25



## QUEEN BEE BREEDING





# QUEEN BEE BREEDING

## MATING BEEHIVES

**1300**

**QUEEN MATING NUCLEUS BOX** for 2 small colonies, with 3+3 frames mounted, vertical excluder, disk entrance and metal sheet roof.



The queen mating nucleus box serves to contain the small family of bees to which is entrusted the royal cell to keep it until the birth of the queen and then this one until fertilization.

In each of the two compartments there are 3 small frames, of which one door on top a pocket feeder. The central wall that separates the two compartments is mobile; by removing it, you can get a single compartment that can accommodate 7 frames.

To populate the beehive, choose a brood frame with a very robust colony and cut portions with a knife: this will be framed in the 6 small frames. Since the family has few foraging bees, it is necessary to often feed it with sugar syrup, using the special pocket-feeder. After a few days the small family is ready to welcome the first of the royal cells that the beekeeper had raised by a strong family and that now, a few hours after the hatching, he hands the nucleus to welcome the queen and the feed at birth.

After the nuptial flight and the regular laying of the first eggs, the queen is taken, marked and introduced in the special cage for the expedition or the introduction in an orphaned family.

## GRAFTING TOOLS AND CUPS



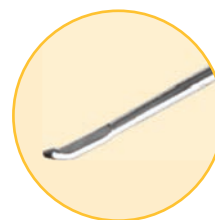
**1390ADX**

**GRAFTING TOOL** in stainless steel with side **thin** hook for **right** handed.



**1390ASX**

**GRAFTING TOOL** in stainless steel with side **thin** hook for **left** handed.



**1390BDX**

**GRAFTING TOOL** in stainless steel with side hook for **right** handed.



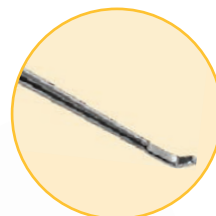
**1390BSX**

**GRAFTING TOOL** in stainless steel with side hook for **left** handed.



**1390C**

**GRAFTING TOOL** in stainless steel with straight hook.



**1390D**

**GRAFTING TOOL** in stainless steel with a straight hook on a side and a little shovel on the other to collect the royal jelly.



## GRAFTING TOOLS AND CUPS



**1392**

**PLASTIC GRAFTING TOOL**



**1394**

**SPRING-LOADED GRAFTING TOOL**



**1420**

**DADANT QUEEN CELL HOLDER FRAME** with three bars upper board feeder.



**1420500**

**DADANT QUEEN CELL CUPS BAR**



**1400**

**PLASTIC CELL CUPS** (package of 250 pieces).



**1410**

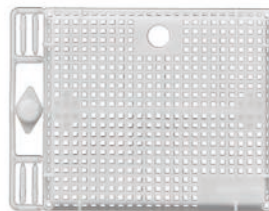
**PURE BEESWAX CELL CUPS** (package of 250 pieces).

## CAGES AND QUEEN MARKING KITS



**1320**

**PLASTIC CAGE** for queen bee's shipping and/or her adding into the beehive.



**1330**

**PLASTIC SQUARE CAGE** to facilitate the queen's acknowledgment.



**1324**

**SCALVINI CAGE** in plastic, to trap the queen for making brood stop. It is embedded in the middle of a brood frame after cutting the corresponding portion out.



**1326**

**QUEEN BLOCKER "MeGa"** it is used to confine the queen, making sure she doesn't breed. MeGa has large outputs for the queen who will be re-accepted without problems and the resumption of the deposition will be immediate and fast in quantity.



**2370**

**CONFINEMENT CAGE** for wired queen excluder, to biologically fight the Varroa.

**CONFINEMENT CAGE** for Anti-Varroa purpose, made with wire queen excluder.



**2373**

For 1 Dadant brood frame - 447x303x42 mm.

**2375**

For 1 Langstroth frame - 460x235x42 mm.





# QUEEN BEE BREEDING

## CAGES AND QUEEN MARKING KITS



**1340**

**QUEEN MARKING KIT** with marking disk and 5 bottles of different colours.



**1342**

**QUEEN MARKING WHITE SET** with marking disk to catch the queen bee.



**1343**

**QUEEN MARKING YELLOW SET** with marking disk to catch the queen bee.



**1344**

**QUEEN MARKING RED SET** with marking disk to catch the queen bee.



**1345**

**QUEEN MARKING GREEN SET** with marking disk to catch the queen bee.



**1346**

**QUEEN MARKING BLUE SET** with marking disk to catch the queen bee.



**QUEEN MARKING POLISH**



**1340250**

**QUEEN MARKING DISK** to hold and mark the queen.

**1352**   **1353**   **1354**   **1355**   **1356**  
WHITE   YELLOW   RED   GREEN   BLUE





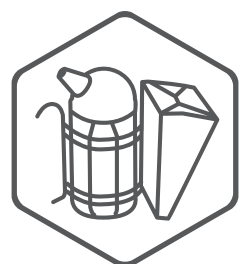
## APIARY

The apiary, by definition, is the place where the beehives are placed: it is always chosen by beekeepers with the utmost care to allow bees to operate at their best climatic and environmental situation possible. To best perform the activity in the apiary you would need to have the right equipment. Starting from Lega smokers, sturdy and functional that can be equipped with protection against scalds, passing through levers and brushes and reaching the honeycomb collection, in this section you will find everything you need for your apiary.

SMOKERS	28
SWARM CATCHERS	30
HIVE TOOLS	31
POLLEN AND PROPOLIS COLLECTION	32
VENOM COLLECTION	33
ANTI-VARROA	33
NUTRITION	35
HONEYCOMBS COLLECTION AND HANDLING	36



## APIARY





**APIARY**

## SMOKERS

Ø 80 MM



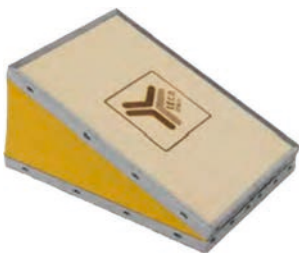
**3750**

SPARE SMOKER CAN in stainless steel.



**3850**

HEAT SHIELD against burns.



**3890**

VINYL SPARE BELLOW



**3892**

PURE LEATHER SPARE BELLOW

**3760**

SMOKER in stainless steel with wire heat shield and hinge.



**3740**

SMOKER in stainless steel.

**3702100**



**3762**

SMOKER in stainless steel with wire heat shield, hinge and cartridge.



## SMOKERS

Ø 100 MM



**3830**

SPARE SMOKER CAN in stainless steel.



**3860**

HEAT SHIELD against burns.



**3890**

VINYL SPARE BELLOW



**3892**

PURE LEATHER SPARE BELLOW

**3840**

SMOKER in stainless steel with wire heat shield and hinge.



**3845**

SMOKER "AMERICA" in stainless steel with heat shield - 300 mm high.

**3782100**



**3842**

SMOKER in stainless steel with wire heat shield, hinge and cartridge.



**3820**

SMOKER in stainless steel.





## SMOKERS



**3911**

**UNIVERSAL MAGNETIC SMOKER HOLDER** to be fixed on any metal surface.



**3912**

**JUTE** for smokers (20 mt x 200 mm wide).



**3913**

**API LAVANDA** lavender fuel for smokers (bag 25 kg).



**3915C**

**"APICALM"** vegetable pellet smoker fuel (15 kg bag).



**3940**

**"APIFUGE"** liquid product in spray for a prompt defense agent against bees. It has a nice smell and it is also great to get the bees coming back in case of transhumance.



**3848**

**APISOLIS ELECTRONIC VAPORIZER** is a biological alternative to the traditional smoker. The liquid inside to produce smoke is made with a base of biological origin and essential oils.



**3848200**

**LIQUID** for electronic vaporizer Apisolis (ref. 3848) - 120 ml.



**3848300**

**RESISTANCE** for electronic vaporizer Apisolis (ref. 3848) in box of 5.

## SWARM CATCHERS



**0940**

**SWARM CATCHER** with metal ring and cotton sack (without perch).



**0960**

**SWARM ENTICER CREAM** to attract the migrant swarms based on natural products (flowers essence). It should be rubbed on the hive entrance and on some already worked frames.

**0932**

**VACUUM SWARM CATCHER IN "NUC-BOX VERSION" WITH BATTERY** the suction system is external to the nuc box and the nuc box itself acts as the final home of the swarm, without any need for subsequent "transfer". The collection of the swarm takes place through a suction tube that enters the nuc box passing through the small door of the same. The vacuum that creates the suction of the swarm is produced by an electric motor powered by a sturdy lithium-ion battery and passes through the high mesh of the nuc box. The battery power supply allows a good autonomy. The suction speed can be adapted according to the length of the hose used and without harming the swarm bees. To reach greater heights, additional tubes of 140 cm length each are available (not included in the price).





## HIVE TOOLS



### CUSTOMISABLE HIVE TOOLS WITH YOUR OWN LOGO



**3327**

**SPATULA** wide, in stainless steel with plastic grip.



**3347**

**LONG HIVE TOOL** in stainless steel with chisel on an end and hook on the other to separate the frames one from the other - 310 mm.



**3357**

**"AMY" HIVE TOOL** in stainless steel with chisel and scraper - 190 mm.



**3365**

**HIVE TOOL WITH SPUR** in stainless steel with a particular serrated side, with chisel and scraper - 210 mm.



**3377**

**HIVE TOOL TO SEPARATE FRAMES** in stainless steel with a solid and ergonomic plastic grip - 220 mm.



**3367**

**"BRIDGE CUTTER" HIVE TOOL** in stainless steel with the spaces of the scraper of the same size of the distance between frames - 200 mm.



**3368**

**"BRIDGE CUTTER" HIVE TOOL** in stainless steel with plastic grip.



**3387**

**AMERICAN HIVE TOOL** in stainless steel - 220 mm.



**3340**

**LONG HIVE TOOL** in painted steel - 310 mm.



**3370**

**"ITALIA" HIVE TOOL** in painted steel - 230 mm.



**3375**

**"AMY" HIVE TOOL** in painted steel - 190 mm.



**3380**

**"AMERICAN" HIVE TOOL** in painted steel - 250 mm.



**3400**

**BEE BRUSH** long wooden handle and natural bristle - 500 mm.



**3408**

**BEE BRUSH** long wooden handle and synthetic bristle - 500 mm.



**3409**

**BEE BRUSH** plastic handle and synthetic bristle - 500 mm.



## POLLEN AND PROPOLIS COLLECTION



**2400**

**WOODEN POLLEN COLLECTOR**  
for the **Dadant** beehive's entrance.



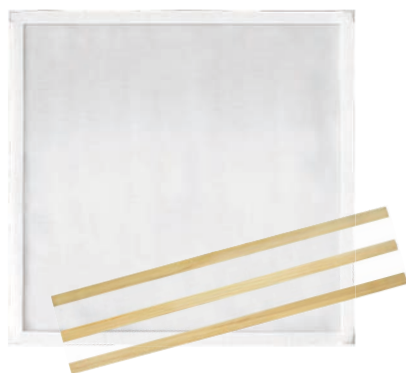
**2442**

**PLASTIC GRID** for pollen collector  
plain with round holes.



**2500E**

**TOP PLASTIC NET** - 430x500 mm.



**2520E**

**TOP PLASTIC NET** - 500x500 mm.



**2550**

**PLASTIC GRID** for propolis collection  
- 430x500 mm.



**2530**

**VERTICAL EXCLUDER** in stainless  
steel for pollen collector to harvest  
propolis, complete with wooden frame  
and protective net.



**2405**

For "standard" **Dadant** beehive's entrance.

**2407**

For "Kubik" **Dadant** beehive's entrance.

## PROFESSIONAL POLLEN COLLECTOR

The pollen trap can be applied to all existing beehives, even those that have an entrance from above. With the assembly of two different sheet metal roofs that protect it from the rain at the top, two different support surfaces are created on the wall and it can be applied to "standard" beehives with portico (ref. 2405) and to "Kubik" beehives (ref. 2407). The trap rests on the step and is quickly fixed to the front wall of the beehive with two eye screws in prepared slots. The "pollen detaching" grid is made of plastic, it has only three horizontal rows of round holes and special longitudinal shelves at the base of the holes, on which the bees rest before passing through the holes themselves. The base mesh, on which the pollen falls before ending up in the nuc box, measures 90x360 mm and is made of AISI 304 stainless steel. On the upper part of the vertical wall that supports the grid there are 6 transparent plastic cones with the tip pointing towards the external, which work in one way for the exit of the drones and bees.





## VENOM COLLECTION



**8250**

**PICK-O-TRONIC** electronic bee venom collector. It can work powered by a 12V battery or by means of a 12V stabilized power supply. This device generates special electric shocks on a glass plate, the intensity of which is adjustable. The glass plate is laid on the flight path of the beehive, all the bees that pass on the electrified plate are irritated by electric discharges and sting the glass plate on which the poison settles and dries. The poison is then collected for "scraping". It can feed up to 5 plates.

## ANTI-VARROA



**8410**

**VASELINE GREASE** to be rubbed on varroa's ground and trap there the fallen varroas - 250 gr.



**8471**

**VAPORIZER FOR OXALIC ACID Oxalika Basic.** It is suitable for beekeepers with few beehives and a lot of time available. This vaporiser requires long working times (4-5 minutes per beehive) because it must always be cooled, to prevent the cup temperature from getting out of control, before adding the next dose of oxalic acid.



**8472**

**VAPORIZER FOR OXALIC ACID** with temperature control **Oxalika Premium.** It is the most popular model for beekeepers with 70-100 beehives. Sublimation is slow but unlike the BASIC model it is equipped with **temperature control**, which is essential to avoid the degradation of oxalic acid and always obtains maximum effectiveness from the treatment. Thanks to the temperature control it is possible to insert the dose of oxalic acid in a hot cup. The advantages of slow sublimation are maintained and less time is needed (40 seconds to dose 1 gram; 1 minute and 30 seconds to dose 2 grams of oxalic acid).



**APIARY**

## ANTI-VARROA

### PROFESSIONAL VAPORIZER OXALIKA PRO EASY NAKED

TO BE COMPLETED WITH A  
DIFFUSER TUBE.



**8476150**

**PROFESSIONAL VAPORIZER Oxalika Pro Easy Naked.** With its 360 Watts of power, the temperature control and the specially designed and insulated boiler, it can administer oxalic acid passing from one beehive to the next without pauses. The vaporiser maintains the ability to sublime immediately after the previous sublimation has just finished. The straight diffuser tube is very rarely clogged and is available in two versions: short, for treatment from behind; long, for treatment from the flight opening. The sublimation time is 10 seconds to administer 1 gram; 20-25 seconds to administer 2 grams of oxalic acid.

### PROFESSIONAL VAPORIZER OXALIKA PRO FAST NAKED

TO BE COMPLETED WITH A DIFFUSER  
TUBE AND A DISPENSER FROM THE  
AVAILABLE SIZES.



**8477150**

**PROFESSIONAL VAPORIZER Oxalika Pro Fast Naked 220V.** This vaporizer completes all the features of the Pro Easy model with the addition of a semi-automatic dosing system. The beekeeper chooses the dosage suitable for his needs (from 1, 1.5 and 2 grams), fills the tank with about 45 grams of oxalic acid and is ready to move from one beehive to the next without having to continuously manipulate the oxalic acid.



**8476310**

**DIFFUSER TUBE** for Oxalika Pro -  
short - 30 mm.



**8476320**

**DIFFUSER TUBE** for Oxalika Pro -  
medium - 65 mm.



**8476330**

**DIFFUSER TUBE** for Oxalika Pro -  
long - 115 mm.



**8476210**

**DISPENSER 1 gram** for Oxalika Pro  
Fast Naked.



**8476220**

**DISPENSER 1.5 grams** for Oxalika Pro  
Fast Naked.



**8476230**

**DISPENSER 2 grams** for Oxalika Pro  
Fast Naked.



## ANTI-VARROA



**8476500**

**BRUSH WITH STAINLESS STEEL BRISTLES** to clean the vaporizer.



**8480**

**"FURETTO" GAS HEATED VAPORIZER AGAINST VARROA** tool activated by thermal process.



**9230**

**API-BIOXAL** with active substance (oxalic acid) - 35 gr.

**MAQS** Antivarroa.  
Can only be sold in Italy.



**9235**

**APILIFEVAR** package with 2 rubber-vaporizers.



**9236**

**APIVAR** Amitraz active substance (package with 10 strips).



**9242**

20 strips / 10 hives.

**9243**

60 strips / 30 hives.



**9248**

**FORMIC PRO** drug based on formic acid in gel strips - box of 10 envelopes containing 2 strips each.

Can only be sold in Italy.



**8450**

**PLASTIC TRAP AGAINST AETHINA TUMIDA** to catch Aethina Tumida inside the beehive, to be put high between the frames.



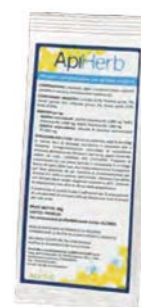
**8452**

**BAIT IN GRANULES** for 25 Aethina Tumida's traps.

## NUTRITION

**9249**

**APIHERB** complementary feed based on dried plant essences and B vitamins. By virtue of the officinal characteristics of the herbs that make it up (garlic and cinnamon), it helps adult bees to preserve the proper intestinal flora, keeping their digestive system efficient with consequent advantage for the colony. It is used from spring to late summer with temperatures possibly higher than 10°C, in the absence of super - 40 gr.







## HONEYCOMBS COLLECTION AND HANDLING



**4030**

**RECTANGULAR CONTAINER**  
made of thermoformed food-safe plastic for 10 **Dadant super** frames, complete with lid.



**4032**

**RECTANGULAR CONTAINER**  
made of food-safe plastic, very handy, with spacers for 8 **Dadant super** frames. It has two handles for an easy grip and a transparent lockable lid.



**4032200**

**LID** for rectangular container made in plastic for 8 **Dadant** frames.



**4050**

**MANUAL BEEHIVE-LIFTER "KAPTARLIFT BASIC"**  
with lever locking, new mechanism to lift beehives and supers up to 100 kg with rubber wheels Ø 350 mm, version with manual operation and push movement.



**4060A**

**ELECTRIC BEEHIVE-LIFTER "PROFESSIONAL KAPTARLIFT" WITH AWD WHEELS** with lever blocking, up to 100 kg and AWD traction with driving wheels Ø 350 mm for a better adherence to every sort of ground. Electrical start with special lythium batteries and charger, with the ability to lift and move completely motorised. It is very useful to load beehives on track.



## CLOTHING

To go into the apiary you need the **right clothing**: a wide range of items such as leather or fabric **gloves**, **veils**, round or square, **blouses**, **jackets**, **coveralls** and **trousers** to satisfy all the needs of the beekeeper. Available colors: yellow and white based on the chosen article. Huge selection of sizes from S to XXXL for some models. Coveralls are also available for the little ones, from 5 to 12 years old.

MESH VEILS	38
YELLOW LINE	38
WHITE LINE	40
PROFESSIONAL LINE	42
GLOVES	46

## CLOTHING





## CLOTHING

### MESH VEILS



**3540**

**SQUARE MESH FOLDABLE VEIL** in black duraluminium screen, front width 290 mm, with cotton veil, allowing maximum protection and ventilation, with string tie down to the underarms.



**3560**

**ROUND MESH VEIL** Ø 410 mm cotton veil and black tulle mesh with held-up mesh, allowing maximum protection and ventilation, with string tie down.



**3580**

**TULLE MESH VEIL** in black cotton with elastic cord at the top, so the mesh can fit any veil or hat. It is easy and quick to wear, with string tie down to the underarms (veil not included).



**3590**

**ROUND FULL VISION VEIL** with aluminium mesh, easy and quick to wear, with string tie down to the underarms.

### YELLOW LINE



#### SQUARE MESH VEIL IN YELLOW HOOD

Made of cotton canvas, it is easy to wear with elastics at the wrists and waist. The hood is equipped with a practical zipper to remove the veil quickly: this remains attached to the jacket so it is easily repositionable and resealable. The zipper is convenient to open even with gloves on. The large pockets allow you to store equipment, keys and mobile phone. The mesh veil is large and gives visibility to 360°, so you can work in the apiary in comfort.

**3620 - SIZE L**

**"SMALL" (fits S-M)**

**3610 - SIZE XL**

**"MEDIUM" (fits L-XL)**

**3615 - SIZE XXL**

**"GIANT" (fits XXL-XXXL)**



#### YELLOW COVERALL

In cotton canvas with elastic at the wrists and ankles, long zip closure and 4 pockets. The front pockets have zippers to prevent objects from falling off when leaning forward while working on hives. The comfortable front zipper is functional to wear the coverall comfortably, even with your clothes on. The fabric is resistant to washing and is machine washable.

**3691 - SIZE S**

**3692 - SIZE M**

**3693 - SIZE L**

**3694 - SIZE XL**

**3695 - SIZE XXL**

**3696 - SIZE XXXL**





## YELLOW LINE

**YELLOW JACKET WITH FULL VISION ROUND VEIL**

Yellow cotton canvas with sponge collar with removable round veil hat in black aluminum mesh. The fabric is resistant to washing, machine washable. It is equipped with practical front and elastic pockets at the wrists and waist. The comfortable front zipper opens completely so you can wear the jacket comfortably with your clothes on. The mesh veil is removable and it is round with 360° vision, which means great visibility and maximum ventilation of the face, to work more comfortably.

**3603 - SIZE L****"SMALL" (fits S-M)****3600 - SIZE XL****"MEDIUM" (fits L-XL)****3605 - SIZE XXL****"GIANT" (fits XXL-XXXL)****YELLOW JACKET WITHOUT FULL VISION ROUND VEIL****3603100 - SIZE L****"SMALL" (fits S-M)****3600100 - SIZE XL****"MEDIUM" (fits L-XL)****3605100 - SIZE XXL****"GIANT" (fits XXL-XXXL)****3600200**

**FULL VISION ROUND VEIL** for jacket. Great 360° view and maximum ventilation. The veil is in one size fits all body types.

**COVERALL "COMPATTA" FOR CHILDREN**

With removable square mesh veil, made of 100% yellow cotton, with elasticated wrists and ankle cuffs, full front zipper and large pockets.

**3651 - SIZE S (5-6 YEARS)****3652 - SIZE M (7-9 YEARS)****3653 - SIZE L (10-12 YEARS)****YELLOW PANTS**

In shrinkproof cotton canvas, suitable for matching with jackets and hoods, complete with elastic belt and ankles, two front pockets and a pocket for the hive tool on the right leg. The fabric is resistant to washing and is machine washable.

**3631 - SIZE M****3632 - SIZE L****3633 - SIZE XL**



## CLOTHING

### WHITE LINE



#### WHITE COVERALL "ASTRONAUTA" WITH MESH VEIL

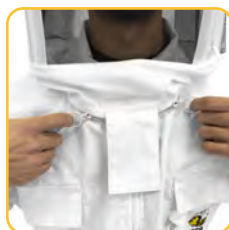
Cotton canvas, very aerated, with large pockets and elastic at the wrists and ankles. The upper part is connected to the coverall by means of a zipper and is completely removable. Thanks to the long front zipper and large and comfortable pockets, it guarantees the practicality of the coverall during visits to the apiary. The gaiters in the sleeves allow the coverall to adhere completely to the arm, in this way you avoid that the sleeves curl. By removing the mesh veil, the coverall can be washed comfortably in the washing machine.

**3642 - SIZE M**

**3643 - SIZE L**

**3644 - SIZE XL**

**3645 - SIZE XXL**



#### WHITE "ASTRONAUTA" JACKET WITH MESH VEIL

Made of cotton canvas, with 4 pockets, elastic belt and wrists with fully removable mesh veil. It is easy to wear and take off thanks to the comfortable front zipper. The gaiters in the sleeves allow the coverall to adhere completely to the arm, in this way you avoid that the sleeves curl. The jacket is machine washable. The mesh veil must be removed and washed separately by hand.

**3661 - SIZE S**

**3662 - SIZE M**

**3663 - SIZE L**

**3664 - SIZE XL**

**3665 - SIZE XXL**



#### WHITE COVERALL "COMPATTA" WITH MESH VEIL

In cotton canvas with spongy collar, complete with square removable mesh veil, with elastics at the wrists and ankles, long zip closure and 4 large pockets. The 2 pockets in the upper part of the body have a zipper to prevent falling objects during processing. The coverall is resistant to washing and easily washable in the washing machine. The mesh veil must be disassembled and washed separately by hand.

**3671 - SIZE S**

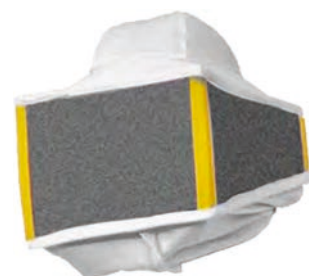
**3672 - SIZE M**

**3673 - SIZE L**

**3674 - SIZE XL**

**3675 - SIZE XXL**

**3676 - SIZE XXXL**



**3678200**

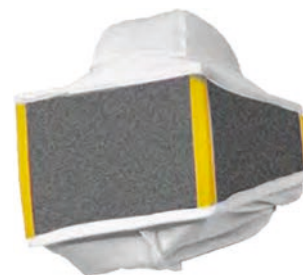
**SQUARE FOLDING VEIL** for white coverall "Compatta". This mesh veil provides great protection because the elastic in the neck allows an excellent fixation and the square folding veil allows a wide view and an excellent ventilation.



## WHITE LINE

**WHITE COVERALL**

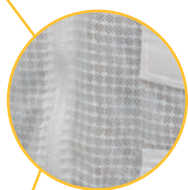
In cotton canvas, with spongy collar, elastic at the wrists and ankles, long zipper closure and 4 large pockets. The practical front and side pockets are perfect for storing equipment. The front pockets have a convenient zipper, so you won't lose items while working.

**3681 - SIZE S****3682 - SIZE M****3683 - SIZE L****3684 - SIZE XL****3685 - SIZE XXL****3686 - SIZE XXXL****3678200**

**SQUARE FOLDING VEIL** for white coverall. This mesh veil provides great protection because the elastic in the neck allows an excellent fixation and the square folding veil allows a wide view and an excellent ventilation.

**VENTILATED WHITE "ASTRONAUTA" COVERALL WITH MESH VEIL**

Manufactured in particular fabric in three layers net. With 6 large pockets and elastic hem at waist, wrists and ankle cuffs. The fencing mesh is integral with the body of the coverall but can be completely detached by means of a zip. Equipped with a long zipper on the sides of the legs, it can be worn without taking off your shoes.

**3642V - SIZE M****3643V - SIZE L****3644V - SIZE XL****3645V - SIZE XXL****VENTILATED WHITE "ASTRONAUTA" JACKET WITH MESH VEIL**

Made with a particular three-layer mesh fabric. It is equipped with 6 pockets for objects, elastic belt and wrists. The mesh veil is attached to the body of the jacket but can be completely detached by means of a zipper. Equipped with a long zipper you can wear comfortably.

**3661V - SIZE S****3662V - SIZE M****3663V - SIZE L****3664V - SIZE XL****3665V - SIZE XXL**





## CLOTHING

FIND OUT  
HOW TO GET YOUR SIZE:  
SCAN THE QR CODE



### PROFESSIONAL LINE

All professional clothing has TÜV certification: it means having safe, resistant and high quality products!  
Products guaranteed over time and in line with European Directives.



#### **"ASTRONAUTA" PROFESSIONAL COVERALL WITH FENCING MESH**

Full body with completely removable fencing mesh and front part veil that can be opened, ventilated on the back. Complete with pockets and simple wrists, belt and ankles with zip open from the neck to the ankles on both legs to easily wear it even without removing bulky boots and clothing.

**3641P - SIZE S**

**3642P - SIZE M**

**3643P - SIZE L**

**3644P - SIZE XL**

**3645P - SIZE XXL**

#### SUGGESTED MEASURES

Height 153 - 162 cm	>	SIZE S
Height 163 - 170 cm	>	SIZE M
Height 171 - 176 cm	>	SIZE L
Height 176 - 182 cm	>	SIZE XL
Height 182 - 189 cm	>	SIZE XXL



**3640P200**

**"ASTRONAUTA" FENCING MESH**  
for coverall.





## PROFESSIONAL LINE

**"ASTRONAUTA" PROFESSIONAL JACKET WITH FENCING MESH**

Made of 100% cotton with twill weave, it has four large front pockets, two of which with zip, and an additional one positioned on the left sleeve. The jacket opens at the front and the elastic at the wrists and at the waist allows an excellent hold of the garment. The fencing mesh is integral with the jacket thanks to a zipper, whose pulls are stopped under a tear-off band. Even the front view of the mesh itself is equipped with a hinge that allows a complete opening; inside there is a rigid spacer that ensures that it remains stable during activity.

**3662P - SIZE M****3663P - SIZE L****3664P - SIZE XL****3660P200**

**"ASTRONAUTA" FENCING MESH**  
for jacket.

**"ASTRONAUTA" PROFESSIONAL TROUSERS**

Made of 100% cotton with twill weave, it has two large front pockets, two rear pockets and one functional on the right leg. The trousers are equipped with a side zip to allow an easy fit. The elastic at the waist and at the ankles, with the addition of the foot gaiters, allows an excellent hold of the garment.

**3631P - SIZE M****3632P - SIZE L****3633P - SIZE XL**



## CLOTHING

FIND OUT  
HOW TO GET YOUR SIZE:  
SCAN THE QR CODE



### PROFESSIONAL LINE

All professional clothing has TÜV certification: it means having safe, resistant and high quality products!  
Products guaranteed over time and in line with European Directives.



#### **"ASTRONAUTA" PROFESSIONAL VENTILATED COVERALL WITH FENCING MESH**

Made of cotton and breathable PVC mesh to allow excellent ventilation, it is integral with a completely removable fencing mesh and the front part that can be opened and ventilated on the back. Complete with pockets and elastics at the wrists, belt and ankles with high quality zippers that open from the neck to the ankles on both sides.

**3641PV - SIZE S**

**3642PV - SIZE M**

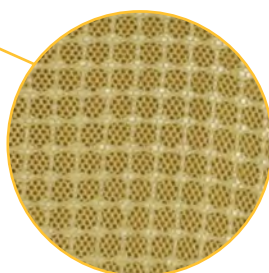
**3643PV - SIZE L**

**3644PV - SIZE XL**

**3645PV - SIZE XXL**

#### **SUGGESTED MEASURES**

Height 153 - 162 cm	>	SIZE S
Height 163 - 170 cm	>	SIZE M
Height 171 - 176 cm	>	SIZE L
Height 176 - 182 cm	>	SIZE XL
Height 182 - 189 cm	>	SIZE XXL



**3640PV200**

**"ASTRONAUTA" VENTILATED FENCING MESH for coverall.**







## PROFESSIONAL LINE

**“ASTRONAUTA” PROFESSIONAL VENTILATED JACKET WITH FENCING MESH**

Made of cotton and breathable PVC mesh, it has four large front pockets, two of which with zip, and a further one positioned on the left sleeve. The jacket opens at the front and the elastic at the wrists and at the waist allows an excellent hold of the garment. The fencing mesh is integral with the jacket thanks to a zipper, whose pulls are stopped under a tear-off band. Even the front view of the mesh itself is equipped with a hinge that allows a complete opening; inside there is a rigid spacer that ensures that it remains stable during activity.

**3662PV - SIZE M****3663PV - SIZE L****3664PV - SIZE XL****3660PV200****“ASTRONAUTA” VENTILATED FENCING MESH for jacket.****“ASTRONAUTA” PROFESSIONAL VENTILATED TROUSERS**

Made of cotton and breathable PVC mesh, it has two large front pockets, two rear pockets and one functional on the right leg. The trousers are equipped with a side zip to allow an easy fit. The elastic at the waist and at the ankles, with the addition of the foot gaiters, allows an excellent hold of the garment.

**3631PV - SIZE M****3632PV - SIZE L****3633PV - SIZE XL**



# CLOTHING

FIND OUT  
HOW TO GET YOUR SIZE:  
SCAN THE QR CODE



## GLOVES



### “ASTRONAUTA” PROFESSIONAL VENTILATED LEATHER GLOVES

Manufactured in genuine leather and sleeves in breathable PVC mesh.

**3441PV - SIZE S / 7**

**3442PV - SIZE M / 8**

**3443PV - SIZE L / 9**

**3444PV - SIZE XL / 10**

**3445PV - SIZE XXL / 11**

All professional clothing has TÜV certification: it means having safe, resistant and high quality products! Products guaranteed over time and in line with European Directives.



### “WATER STOP” GLOVES

This model is coated with a special film that makes it waterproof, so as not to get your hands wet during work. In contact with the hand there is cotton fabric, so as not to create irritation and reduce sweat.

**3432 - SIZE M / 8**

**3433 - SIZE L / 9**

**3434 - SIZE XL / 10**



### “BEE-SAFE” GLOVES

Professional and waterproof gloves for all uses in apiary. Super resistant against cuts, burns, splinters and with inner fabric anti sweat. Long sleeve with elastic for better protection from punctures.

**3431J - SIZE S / 7**

**3432J - SIZE M / 8**

**3433J - SIZE L / 9**

**3434J - SIZE XL / 10**



### LEATHER GLOVES

Professional, with long shape up to cover the wrist and with cotton cuff with elasticized knitted edge.

**3440 - SIZE XS / 6**

**3441 - SIZE S / 7**

**3442 - SIZE M / 8**

**3443 - SIZE L / 9**

**3444 - SIZE XL / 10**

**3445 - SIZE XXL / 11**



## UNCAPPING

**Uncapping** is the first stage of processing in the beekeeper's laboratory and consists in eliminating the wax layer that closes the cells containing the honey. Very useful for carrying out this activity are **forks, knives** and **trays** on which you can place the tools. From the simple **capping tray** to **semiautomatic machines** up to **automatic uncappers**, we have available for our customers a large variety of products.

UNCAPPING TRAYS	48
ACCESSORIES	50
UNCAPPING MACHINES	51
CAPPINGS HANDLING	57

## UNCAPPING







# UNCAPPING

## UNCAPPING TRAYS



**4100**

**PLASTIC UNCAPPING TRAY** with support, complete of drip for cappings, frame holder and lid - 700x450x400 mm (knife and stander not included).



**4161**

**STAINLESS STEEL FRAME HOLDER** for plastic uncapping tray.



**4102500**

**STAINLESS STEEL FRAMES HOLDER** to be hung to one side of the plastic uncapping tray.



**4101**

**UNCAPPING DOUBLE TRAY** in food-graded plastic. It is ideal for beginners. It is composed by an external tank, a honey gate, a box for the drip of the cappings that has to be placed in "working position" rotated by 180°, a steel framed grid, wooden frame holder and plastic lid.



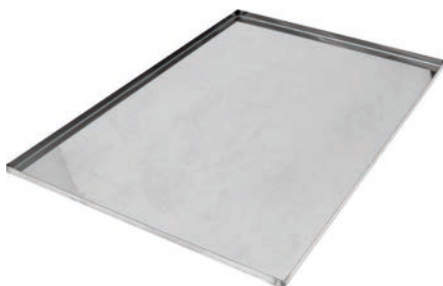
**4106**

**SMALL PLASTIC UNCAPPING TRAY** with inner dripper, stainless steel frame holder and **honey gate** - 600x400x180 mm.



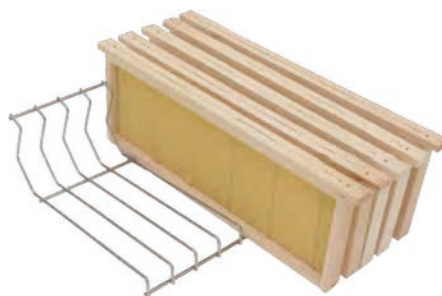
**4105**

**SMALL PLASTIC UNCAPPING TRAY** with plastic tray, inner dripper and stainless steel frame holder (**without honey gate**) - 600x400x180 mm.



**4105110**

**STAINLESS STEEL LID** for small uncapping tray.



**4105500**

**STAINLESS STEEL FRAME HOLDER** for small uncapping tray to be placed on the lid (ref. 4105110) so as not to lose drops of honey.



**4116**

**Dadant** 650x480x823 mm.

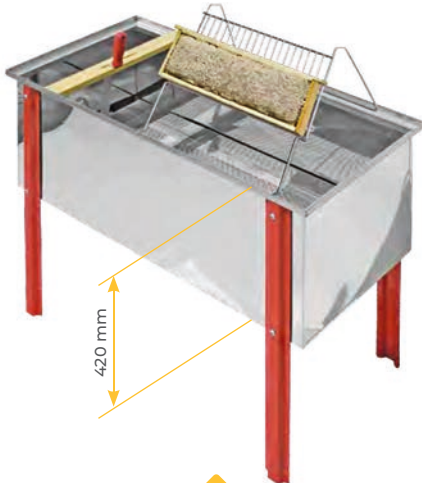
**4117**

**Langstroth** 650x540x823 mm.



## UNCAPPING TRAYS

**UNCAPPING TRAY** in stainless steel welded by robots with the TIG system. Complete with double inner dripper, lid, wooden holder, honey gate Ø 40 mm and removable legs (frame holder not included).



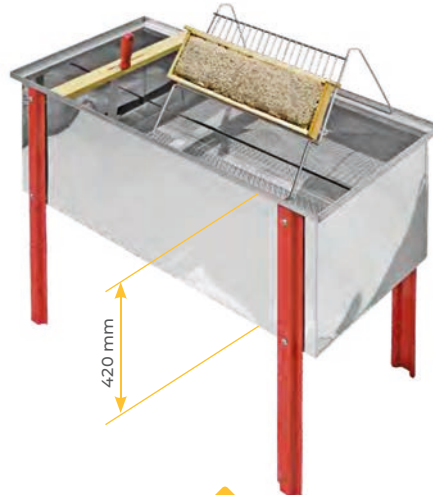
**4120**

Dadant - 1000x480x823 mm.

**4121**

Langstroth - 1000x540x823 mm.

**UNCAPPING TRAY** in stainless steel, with inner dripper, lid, wooden holder and honey gate Ø 40 mm (frame holder not included).

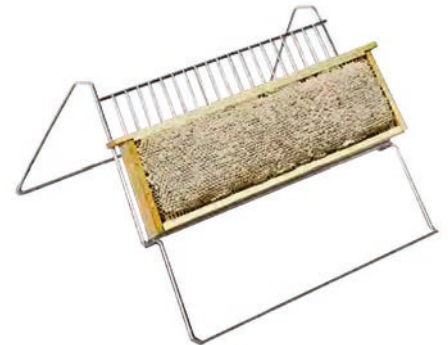


**4125**

Dadant - 1250x480x823 mm.

**4126**

Langstroth - 1250x540x823 mm.



**4170**

**FRAMES HOLDER** in stainless steel, to hold the frames for stainless steel trays.



**4172**

**DOUBLE FRAMES HOLDER** in stainless steel, to hold the frames for stainless steel trays. Two people can work at the same time.

**TROLLEY BARROW WITH TRAY FOR UNCAPPING MACHINE** with tank 1500 mm complete with wheels, double lid, inner dripper for cappings, honey gate Ø 40 mm and 3 baskets to collect the cappings with tubular structure in stainless steel equipped with 4 locking wheels at the feet, so that it can be positioned anywhere in the laboratory. Perfect to be combined with an uncapping machine.

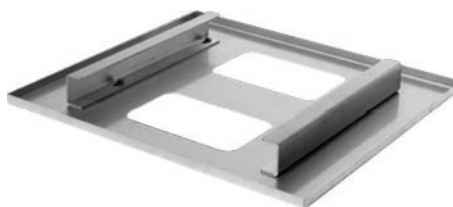


**4195**

Dadant - 1530x500x840 mm.

**4196**

Langstroth - 1500 mm.



**4273DB**

**MANUAL DE-BOXER** for Dadant frames.



**4140**

**PROFESSIONAL UNCAPPING TRAY** sturdy tubular structure with double inner dripper with 2 structures to hold the frames in **stainless steel AISI 304**, wooden holder for the tray, aluminium lid and stainless steel honey gate Ø 40 mm - 2000x750x640 mm.



## UNCAPPING TRAYS



4285DB

4272

**TROLLEY BARROW FOR MANUAL DE-BOXING OF THE FRAMES** Trolley barrow in *AISI 304* stainless steel where to place the supers with frames to be uncapped. This trolley is designed to be combined with an automatic or semi-automatic uncapping machine, or to manually uncap using our *ROLL* uncapping machine (ref. 4285DB). The guides positioned on the left side are designed to contain the super waiting for the processing of the frames. These guides are removable, so as to allow the fixing of the *ROLL* uncapping machine (ref. 4285DB). The openings ensure that the honey that drips goes into the plastic tank, where it can be collected comfortably at the end of the operation. On the right side there is a steel top with plates (also in steel) in relief that, with an appropriate pressure of the operator on the super, allow you to quickly and comfortably detach the frames from the super. On this side there are openings too and a plastic tank placed below to avoid the dispersion of honey. The trolley is equipped with swivel wheels to be able to be moved easily; these have the safety lock system giving greater stability. This versatile trolley can be combined with any type of uncapping machine, given the ease of recovery of the frames from the super - 1105x475x881 mm.

## ACCESSORIES



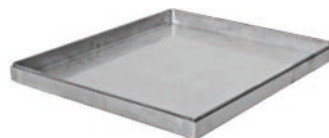
4180

500x500 mm.



4183

430x500 mm.



4180200

500x500 mm.



4183200

430x500 mm.

**STAINLESS STEEL TRAY** for trolley barrow.



4207

**UNCAPPING KNIFE** in stainless steel, sharp on both cutting edges - 220 mm.



4227

**UNCAPPING KNIFE** in stainless steel, sharp on both cutting edges - 280 mm.



4230

**UNCAPPING KNIFE** in stainless steel, sharp on both serrated cutting edges - 280 mm.



4250

**UNCAPPING ELECTRICAL "AMERICAN" KNIFE** heated by an internal resistance - 230 mm.





## ACCESSORIES



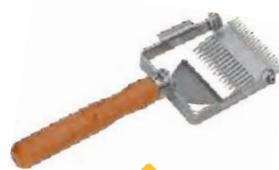
**4260**

**UNCAPPING FORK**  
with sturdy steel teeth and ergonomic plastic handle.



**4261**

**UNCAPPINGS FORK**  
"INOX PLUS" with scraper and ergonomic plastic handle, laser cutted.



**4264**

**DOUBLE-ACTION  
REVERSE UNCAPPING  
FORK** with wooden handle and logo.

## UNCAPPING MACHINES



### ROLL UNCAPPING MACHINE

Manual uncapping machine. The capped cells are opened by the simultaneous action of the circular cutting knives on both the sides of the comb at the same time. The exit of the honey is full. Now it has a new automatic system that let the frames go out without the need of a second action.

**4285DB DADANT**

**4285B1 SIMPLEX**

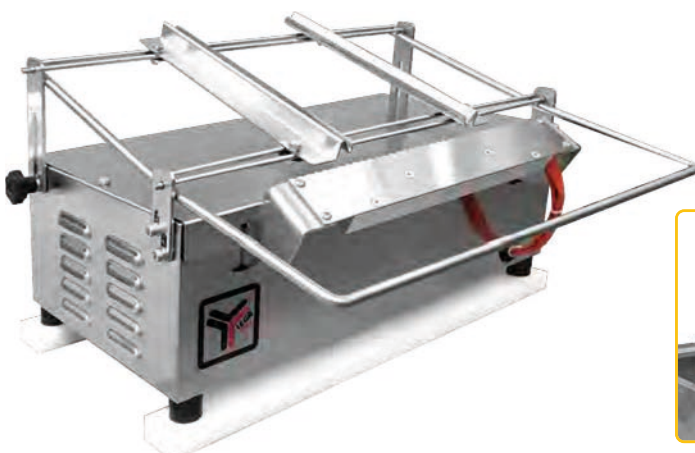
**4285F1 BURKI**

**4285LG LANGSTROTH**

**4285LGA1 ADAMEC**

**4285R1 ZANDER**

**4285R3 DNM**



**4290**

### SMALL UNCAPPING MACHINE

In stainless steel, with swinging horizontal electric knife heated by a thermostat. It has to be placed on an uncapping tray. Knives lenght: 310 mm.



## UNCAPPING MACHINES



### 4326V

**UNCAPPING MACHINE "DAISY" FOR DADANT FRAMES (not Hoffman)** with chain with variable speed, two electrically knives heated by a resistance that swing vertically, motorised chain for the progress of the frames and a device to open the combs very deeply (*support not included*).



### 4336L

See page 53.

**PNEUMATIC FRAME EJECTOR AND RECEIVER** for the uncapping machine "Daisy" for Dadant super frames. It is ready to apply to the uncapping machine and it allows you to increase the productivity of the machine (*support not included*).

### 4330

Capacity **12 FRAMES**.

### 4331

Capacity **22 FRAMES**.

### 4332

Capacity **36 FRAMES**.



### 4326V



## UNCAPPING MACHINES

**UNCAPPING SEMI-AUTOMATIC MACHINE DV2** with manual feeding of the frames and automatic descend by motorised chains, horizontally oscillating serrated knives heated by electrical resistances with high precision thermostat. It uncaps both sides of the frame at the same time. The knives are equipped with a special adjustable device which it also allows “under-wood” uncapping.

### 4350

For **Dadant super** frames.

### 4351

For **Langstroth** frames.

### 4353

For **Zander** frames.



**SUPPORT FOR UNCAPPING MACHINE**  
extra-thick stainless steel with a 1500 mm long tank with 2 baskets for collecting cappings, wheels included.



**PROFESSIONAL SUPPORT FOR UNCAPPING MACHINE**  
with an opening for the fallen cappings that go directly into the hopper of the capping press and a separator with a tank long 1500 mm, wheels included.



### 4336L

For **Dadant super** frames.

### 4337L

For **Langstroth** frames.

### 4338L

For **Dadant super** frames.

### 4339L

For **Langstroth** frames.





## UNCAPPING MACHINES





## UNCAPPING MACHINES



**OUTPUT AUTOMATIC CONVEYOR** with two rails with motorised chains and step by step progress in order to give enough space between the uncapped frames, to combine with DV2 and DV4 uncapping machines.



### 4350L400

**SUPPORT IN TUBULAR STAINLESS STEEL AISI 304** to adapt the DV2 uncapping machine to the cappings press or to combine it with the automatic output conveyor.

### 4318LDB

For **Dadant super** frames.

### 4318LLG

For **Langstroth** frames.



**4350 / 4351 \***

**!** \* For combination DV2 (ref. 4350/4351) with tubular stainless steel support (ref. 4350L400) and output automatic conveyor (ref. 4318LDB/4318LLG) please contact [service@legaitaly.com](mailto:service@legaitaly.com) before purchasing.



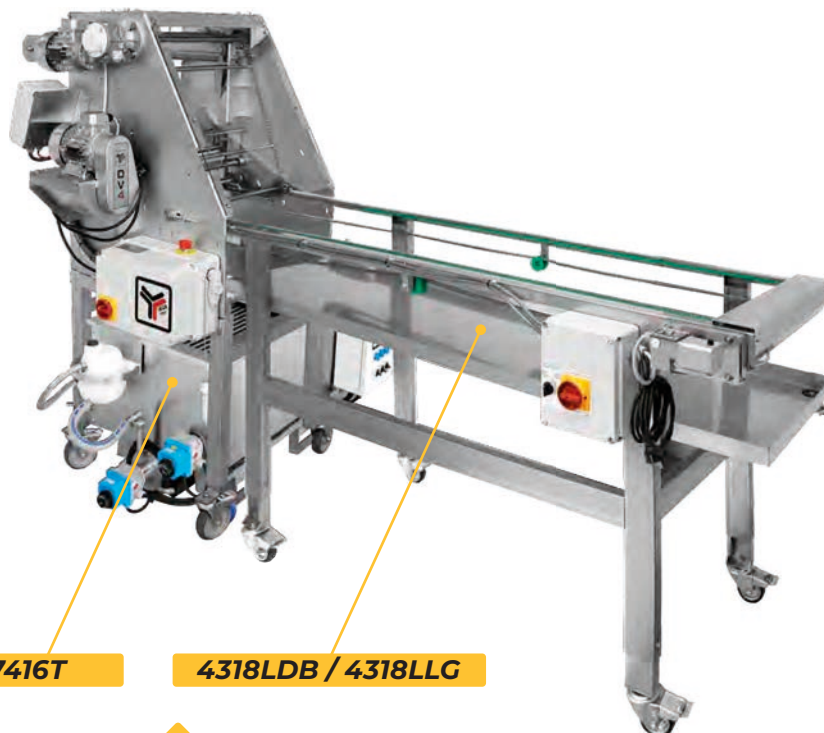
# UNCAPPING

## UNCAPPING MACHINES

**PROFESSIONAL UNCAPPING MACHINE DV4** fully automatic. It uncaps roughly 10 frames per minute and it has an automatic descend by motorised chains, horizontally oscillating serrated knives heated by electrical resistances with high precision thermostat. It uncaps both sides of the frame at the same time. The knives are equipped with a special adjustable device which it also allows "under-wood" uncapping.



**7416T**



**4318LDB / 4318LLG**

### **4300**

For **Dadant super** frames.

### **4301**

For **Langstroth** frames.



**4300 / 4301**

**ELECTRIC DE-BOXER**  
for professional uncapping  
machine DV4.

### **4275DB**

For **Dadant super** frames.

### **4275LG**

For **Langstroth** frames.





## CAPPINGS HANDLING



### 4410LM

ELECTRIC CAPPINGS-SQUEEZER WITH HORIZONTAL AXLE IN SNAIL FORM with **monophasic** gearmotor.

### 4410LT

ELECTRIC CAPPINGS-SQUEEZER WITH HORIZONTAL AXLE IN SNAIL FORM with **threephasic** gearmotor.



### 7416T

**CONTINUOUS WAX - HONEY SEPARATOR threephasic.** It goes exactly under the uncapping machines and melts the cappings when they fall in the grid where the water hits 80°C, separating the wax from the honey. The honey stays on the collections tank's ground with a temperature of 40°C. It is equipped with 2 resistors: one for the 2000W tank and another for the 4500W grid.



### 7030

**MANUAL CAPPING PRESS** for squeezing honey from the cappings with Ø 250 mm cage and stainless steel collection tank - cage's capacity 10 lt.







## HONEY EXTRACTORS

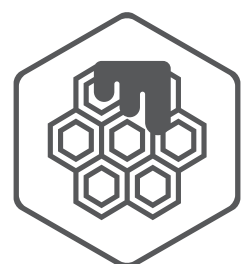
**Honey extraction** is the process after uncapping: therefore, the use of a honey extractor is necessary. Thanks to the centrifugal force, it makes the honey come out of the frames.

In this regard, we offer a very wide range of honey extractors: **radial** or **tangential**, **manual** or **motorised**, to adapt to any type of beekeeper's need.

For professional beekeepers we also have two complete honey extraction lines: starting from the support table up to when the frames go out thanks to the conveyor. So **uncapping** and **extraction** processes are **entirely automatised**.

MANUAL TANGENTIAL	61
MANUAL RADIAL	64
MANUAL TANGENTIAL/RADIAL	67
MOTORISED TANGENTIAL	69
MOTORISED RADIAL	71
MOTORISED TANGENTIAL/RADIAL	75
PROFESSIONAL RADIAL	76
REVERSIBLES	78
PROFESSIONAL EXTRACTION LINES	79
SPARE PARTS AND ACCESSORIES	81
HONEY GATES AND FITTINGS	84

## HONEY EXTRACTORS

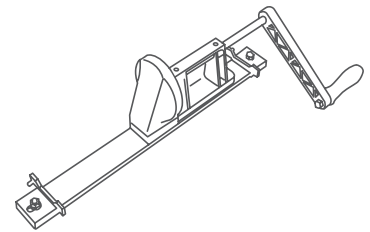
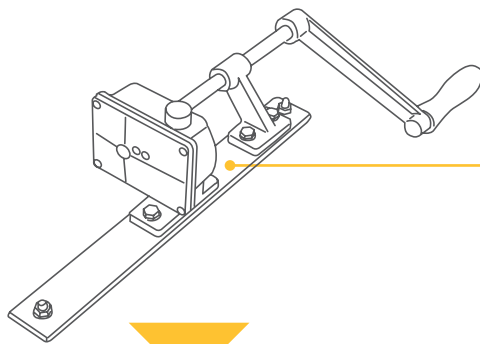






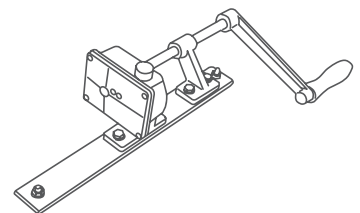
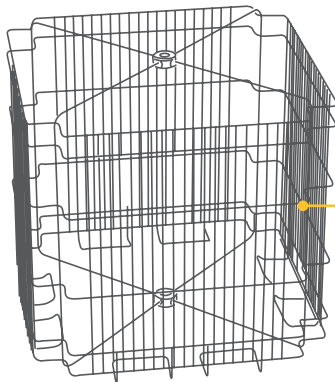
# HONEY EXTRACTORS

## MANUAL EXTRACTORS



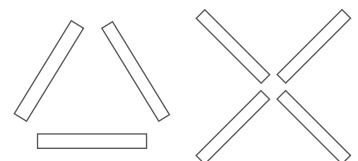
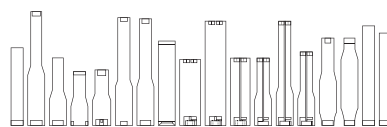
### CONICAL GEARS

The conical gear transmission consists of a pair of silent nylon gears with a 1/3 ratio. It is mounted on a cross bar and is equipped with a crank that allows the honey extraction to be started.



### HELICAL GEARS

The aluminum helical gear transmission is characterised by automatic disengagement of the crank: the moment you stop operating it, the crank stops and only the cage turns. Furthermore, by turning it in the opposite direction of the starting rotation, a braking system is triggered to block the rotation of the cage at any time.



### CAGES FOR FRAMES

**TANGENTIAL OR RADIAL** - The cages of the LEGA honey extractors are all in stainless steel and the thickness used gives them strength.

### VAT HONEY EXTRACTORS

The vat of all honey extractors is strictly in AISI 304 stainless steel.

### DISCHARGE

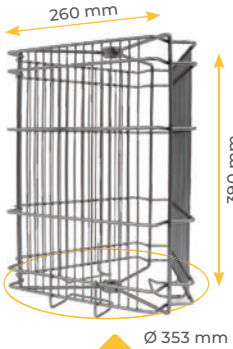
The gate through which the honey comes out at the end of honey extraction can be either in Hostaform or in stainless steel (in professional honey extractors). The discharge is almost total in all honey extractors, with some exceptions.



## MANUAL TANGENTIAL

### "MICRO"

Ø 378 MM



**4507600**



**4506SX**

With stainless steel cage and **helical gears**.



**SS306CE**

With stainless steel cage, **helical gears** and **full discharge bottom**.



**4507SX**

With stainless steel cage and plastic **conical gears**.

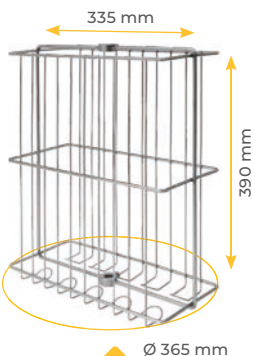


**SS306PE**

With stainless steel cage, plastic **conical gears** and **full discharge bottom**.

### "QUATTRO"

Ø 378 MM



**4517600**



**4517SX**

With stainless steel cage, plastic **conical gears**, stainless steel filter and underneath a 50 kg ripener with honey gate.



**4518SX**

Only extractor's body with three removable legs, stainless steel cage and plastic **conical gears**.



**4519SX**

Only extractor's body, stainless steel cage and plastic **conical gears**.



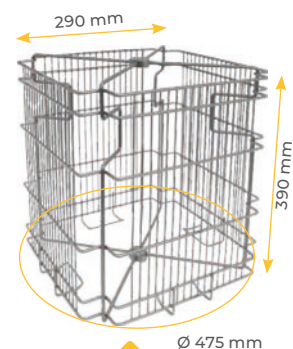


# HONEY EXTRACTORS

## MANUAL TANGENTIAL

### "4 LANGSTROTH"

Ø 520 MM



**4607600**



**4606SXJ**

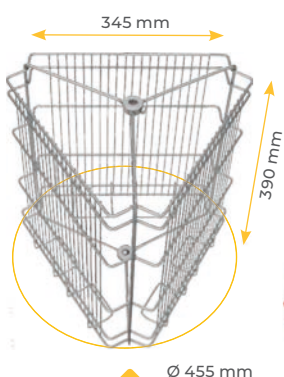
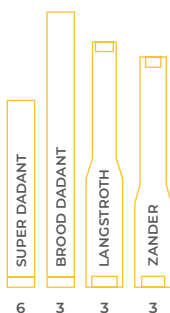
With stainless steel cage, helical gears and full discharge bottom.

**4607SXJ**

With stainless steel cage, plastic conical gears and full discharge bottom.

### "NIBBIO"

Ø 520 MM



**4527600**



**4526SXJ**

With stainless steel cage, helical gears and full discharge bottom.

**4527SXJ**

With stainless steel cage, plastic conical gears and full discharge bottom.

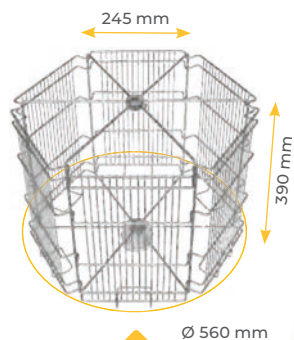




## MANUAL TANGENTIAL

### “6 LANGSTROTH”

Ø 625 MM



**4667600**

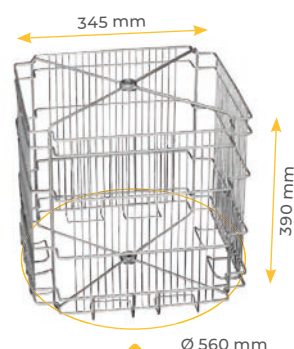


**4666SXJ**

With stainless steel cage, helical gears and full discharge bottom.

### “FALCO”

Ø 625 MM



**4567600**



**4566SXJ**

With stainless steel cage, helical gears and full discharge bottom.



# HONEY EXTRACTORS

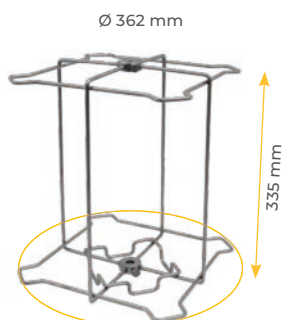
## MANUAL RADIAL

### “COLIBRÌ”

Ø 378 MM



4



4497600

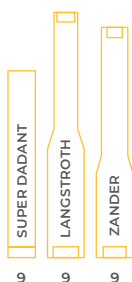


4497SX

With stainless steel cage and plastic **conical gears**.

### “GABBIANO”

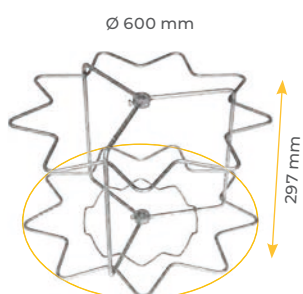
Ø 625 MM



9

9

9



4646600



4646SXJ

With stainless steel cage, **helical gears** and **full discharge bottom**.



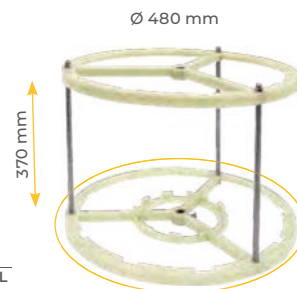
## MANUAL RADIAL

### “RADIALNOVE”

Ø 520 MM



SUPER DADANT	BROOD DADANT	LANGSTROTH	ZANDER	
9	-	-	-	RADIAL
6	3	3	3	TANGENTIAL



**4690600**

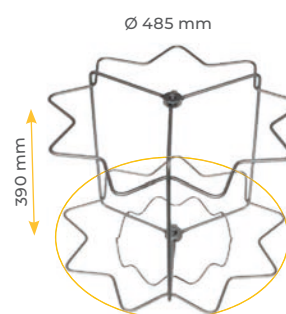
**4690SXJ**

With food-grade plastic cage, plastic **conical gears** and **full discharge bottom**.

**4695SXJ**

With food-grade plastic cage, **helical gears** and **full discharge bottom**.

SUPER DADANT	LANGSTROTH	ZANDER	
9	-	-	RADIAL
3	3	3	TANGENTIAL *



**4697601**

**4697SXJ**

With stainless steel cage, plastic **conical gears** and **full discharge bottom**.

**4696SXJ**

With stainless steel cage, **helical gears** and **full discharge bottom**.

\* with the addition of additional panels **ref. 4797** (see page 82)







# HONEY EXTRACTORS

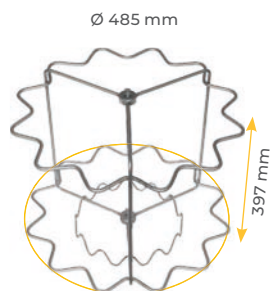
## MANUAL RADIAL

### “RADIAL 12”

Ø 520 MM

SUPER DADANT

12



4687600



4687SXJ

With stainless steel cage, plastic **conical gears** and full discharge bottom.

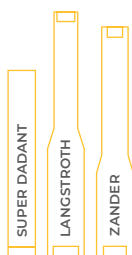


4686SXJ

With stainless steel cage, **helical gears** and full discharge bottom.

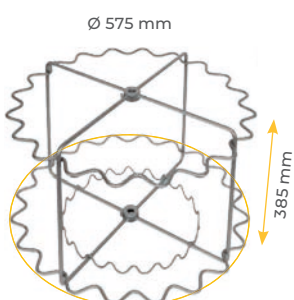
### “TUCANO”

Ø 625 MM



20	8	8	RADIAL
8	4	4	TANGENTIAL *

\* with the addition of additional panels **ref. 4797** (see page 82)



4737601



4736SXJ

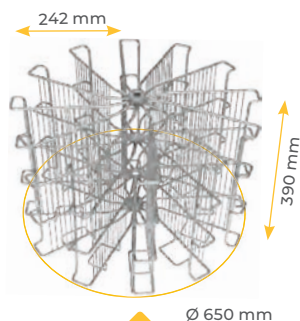
With stainless steel cage, **helical gears** and full discharge bottom.



## MANUAL RADIAL

**“KIWI”**

**Ø 700 MM**



**4778600**



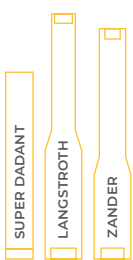
**SS707CY**

With stainless steel cage, helical gears and full discharge bottom.

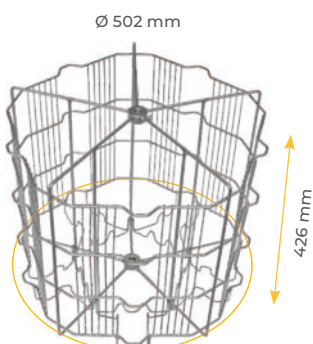
## MANUAL TANGENTIAL/RADIAL

**“JOLLY”**

**Ø 502 MM**



15	-	-	RADIAL
5	5	5	TANGENTIAL



**GF0519**



**SS519CJ**

With stainless steel cage, helical gears and full discharge bottom.



**SS519PJ**

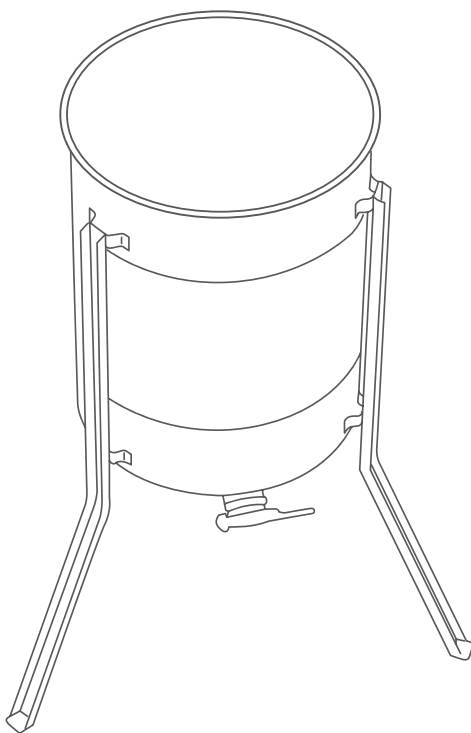
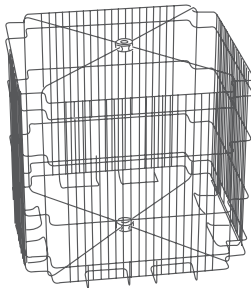
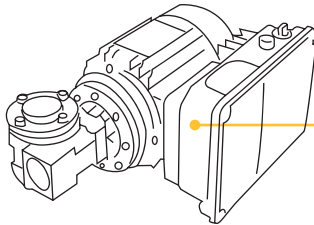
With stainless steel cage, plastic conical gears and full discharge bottom.



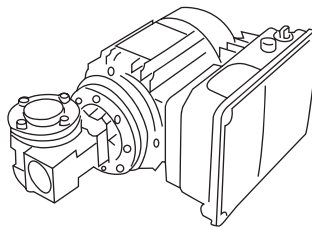
# HONEY EXTRACTORS

## MOTORISED EXTRACTORS

ANY EXTRACTOR CAN MOUNT ANY OF THE FOLLOWING MOTORS:

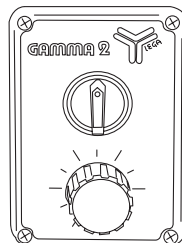


### TOP 2 MOTOR



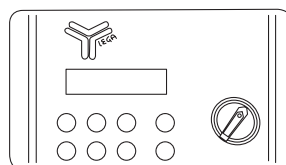
- Powerful 270 W motor;
- Motorisation placed above the vat;
- The lid lock has an immediate opening as soon as the cage stops rotating;
- Reverse rotation;
- Ramp controlled in acceleration and deceleration by electronic board;
- Speed controlled by potentiometer;
- Braking is managed through or reverse rotation phase to reduce waiting times;
- Acceleration is very fast and is managed electronically based on the absorption of the engine.

### GAMMA 2 MOTOR



- Powerful 100 W motor;
- Motorisation placed under the vat;
- The lid lock has an immediate opening as soon as the cage stops rotating;
- The electrical panel is placed laterally to improve accessibility when loading and unloading;
- Reverse rotation;
- Ramp controlled in acceleration and deceleration by electronic board;
- Speed controlled by potentiometer;
- The START STOP REVERSE button flashes to indicate use;
- Braking is managed through or reverse rotation phase to reduce waiting times;
- Acceleration is very fast and is managed electronically based on the absorption of the engine.

### AUTOMATIC GAMMA 2 MOTOR



- Powerful 100 W motor;
- Operation both manual and via adjustable preset program (times and speeds), through which the honey extractor rotates in both directions of rotation automatically;
- Motorisation placed under the vat;
- The lid lock has an immediate opening as soon as the cage stops rotating;
- The electrical panel is placed laterally to improve accessibility when loading and unloading;
- Reverse rotation;
- Ramp controlled in acceleration and deceleration by electronic board;
- Braking is managed through or reverse rotation phase to reduce waiting times;
- Acceleration is very fast and is managed electronically based on the absorption of the engine.

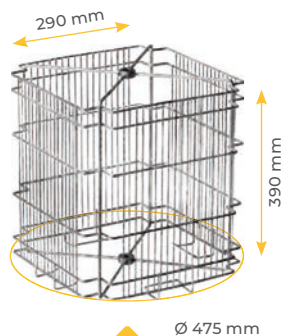




## MOTORISED TANGENTIAL

### "4 LANGSTROTH"

Ø 520 MM



**4607600**



**4608SG2J**

With stainless steel cage, **GAMMA 2** motor with variable speed and **full discharge bottom**.

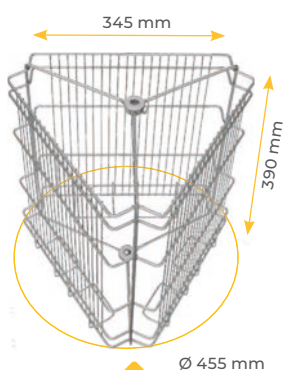


**4608ST2J**

With stainless steel cage, **TOP 2** motor with variable speed and **full discharge bottom**.

### "NIBBIO"

Ø 520 MM



**4527600**



**4528SG2J**

With stainless steel cage, **GAMMA 2** motor with variable speed and **full discharge bottom**.



**4528ST2J**

With stainless steel cage, **TOP 2** motor with variable speed and **full discharge bottom**.

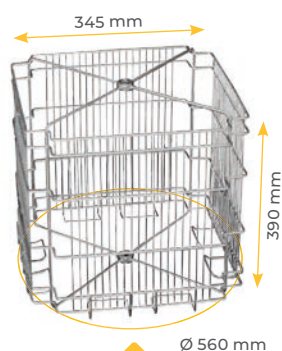
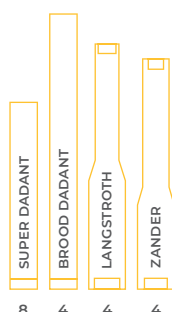


# HONEY EXTRACTORS

## MOTORISED TANGENTIAL

### “FALCO”

Ø 625 MM



**4567600**



#### 4568SG2J

With stainless steel cage, **GAMMA 2** motor with variable speed and **full discharge bottom**.

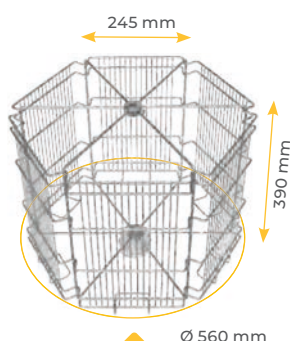


#### 4528ST2J

With stainless steel cage, **TOP 2** motor with variable speed and **full discharge bottom**.

### “6 LANGSTROTH”

Ø 625 MM



**4667600**



#### 4668SG2J

With stainless steel cage, **GAMMA 2** motor with variable speed and **full discharge bottom**.



#### 4668ST2J

With stainless steel cage, **TOP 2** motor with variable speed and **full discharge bottom**.



## MOTORISED RADIAL

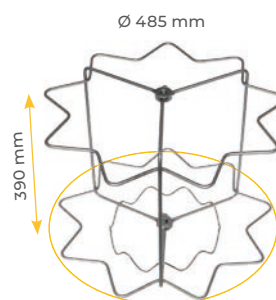
### “RADIALNOVE”

Ø 520 MM

\* with the addition of additional panels **ref. 4797** (see page 82)



SUPER DADANT	LANGSTROTH	ZANDER	
9	-	-	RADIAL
3	3	3	TANGENTIAL *



**4697601**



**4698SG2J**

With stainless steel cage, **GAMMA 2 motor** with variable speed and **full discharge bottom**.



**4698ST2J**

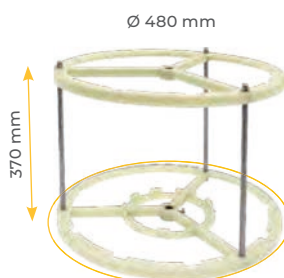
With stainless steel cage, **TOP 2 motor** with variable speed and **full discharge bottom**.



**4698SH2J**

With stainless steel cage, **automatic GAMMA 2 motor** with variable speed and **full discharge bottom**.

SUPER DADANT	BROOD DADANT	LANGSTROTH	ZANDER	
9	-	-	-	RADIAL
6	3	3	3	TANGENTIAL



**4690600**



**4699SG2J**

With food-grade plastic cage, **GAMMA 2 motor** with variable speed and **full discharge bottom**.



**4599ST2J**

With food-grade plastic cage, **TOP 2 motor** with variable speed and **full discharge bottom**.





# HONEY EXTRACTORS

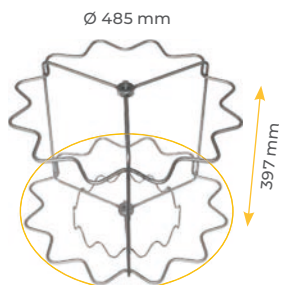
## MOTORISED RADIAL

### “RADIAL 12”

Ø 520 MM

SUPER DADANT

12



4687600



4688SG2J

With stainless steel cage, **GAMMA 2** motor with variable speed and **full discharge bottom**.



4688ST2J

With stainless steel cage, **TOP 2** motor with variable speed and **full discharge bottom**.

### “UNIVERSAL 12”

Ø 625 MM

SUPER DADANT

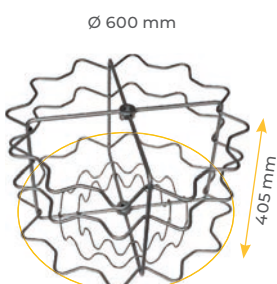
12

LANGSTROTH

12

ZANDER

12



4670UNI600



4670UNISG2J

With stainless steel cage, **GAMMA 2** motor with variable speed and **full discharge bottom**.



4670UNIST2J

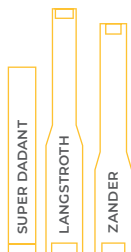
With stainless steel cage, **TOP 2** motor with variable speed and **full discharge bottom**.



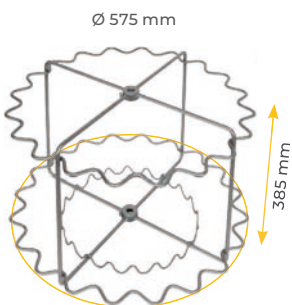
## MOTORISED RADIAL

### “TUCANO”

Ø 625 MM



20	8	8	RADIAL
8	4	4	TANGENTIAL *



4737601



**4738SG2J**

With stainless steel cage, **GAMMA 2 motor** with variable speed and **full discharge bottom**.



**4738ST2J**

With stainless steel cage, **TOP 2 motor** with variable speed and **full discharge bottom**.



**4738SH2J**

With stainless steel cage, **automatic GAMMA 2 motor** with variable speed and **full discharge bottom**.



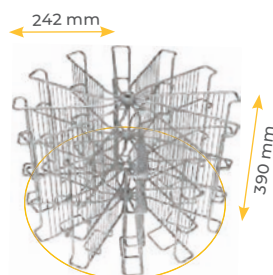
\* with the addition of additional panels ref. **4797** (see page 82).

### “KIWI”

Ø 700 MM



12	12	12
----	----	----



Ø 650 mm

4778600



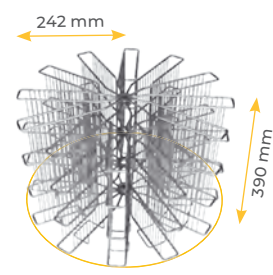
**4778SG2Y**

With stainless steel cage, **GAMMA 2 motor** with variable speed and **full discharge bottom**.



**4778ST2Y**

With stainless steel cage, **TOP 2 motor** with variable speed and **full discharge bottom**.



Ø 650 mm

GF0714



**SS714T2Y**

With stainless steel pocket shape cage, **TOP 2 motor**, **full discharge bottom**.

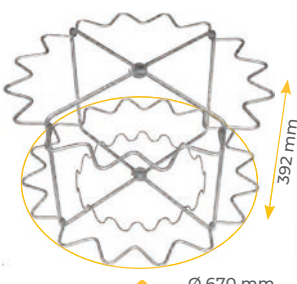


# HONEY EXTRACTORS

## MOTORISED RADIAL

### “IBIS”

Ø 700 MM



4748600



4748SG2Y

With stainless steel cage, **GAMMA 2 motor** with variable speed and **full discharge bottom**.



4748ST2Y

With stainless steel cage, **TOP 2 motor** with variable speed and **full discharge bottom**.

### “FLAMINGO”

Ø 700 MM



28	-	12	20	RADIAL
8	4	4	4	TANGENTIAL *



5000600



5000SG2Y

With stainless steel laser-cut cage, **GAMMA 2 motor** with variable speed and **full discharge bottom**.



5000ST2Y

With stainless steel laser-cut cage, **TOP 2 motor** with variable speed and **full discharge bottom**.



5000SH2Y

With stainless steel laser-cut cage, **automatic GAMMA 2 motor** with variable speed and **full discharge bottom**.



\* with the addition of additional panels ref. 4809 (see page 82).



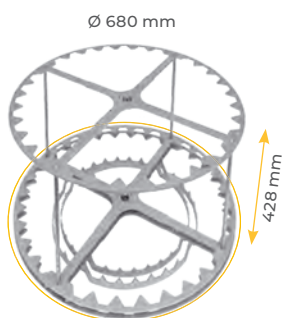


## MOTORISED RADIAL

### “FLAMINGO”

Ø 700 MM

SUPER DADANT	LANGSTROTH	ZANDER	DNM 222 mm	DNM 110 mm	
28	12	20	12	28	RADIAL
8	4	4	4	8	TANGENTIAL*



GF0718



#### SS718G2Y

With stainless steel laser-cut cage, **GAMMA 2 motor** with variable speed and **full discharge bottom**.



#### SS718T2Y

With stainless steel laser-cut cage, **TOP 2 motor** with variable speed and **full discharge bottom**.



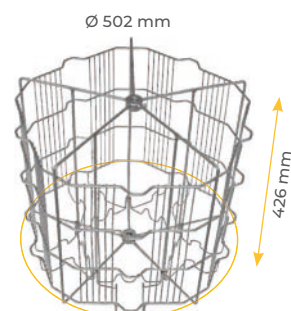
\* with the addition of additional panels ref. 4809 (see page 82).

## MOTORISED TANGENTIAL/RADIAL

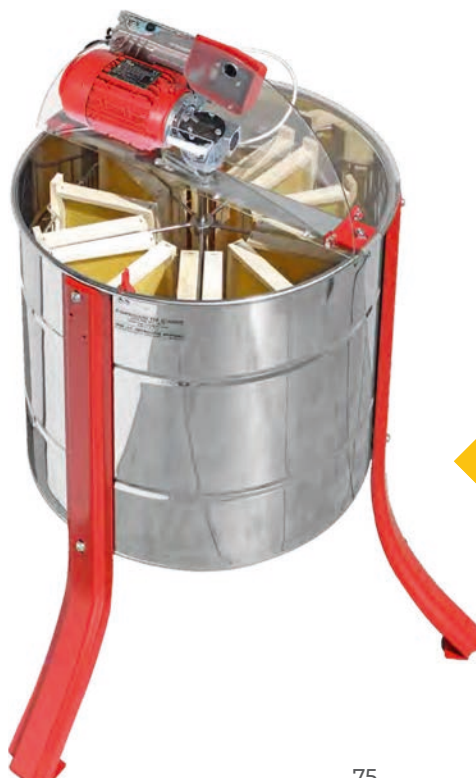
### “JOLLY”

Ø 520 MM

SUPER DADANT	LANGSTROTH	ZANDER	
15	-	-	RADIAL
5	5	5	TANGENTIAL



GF0519



#### SS519G2J

With stainless steel cage, **GAMMA 2 motor** with variable speed and **full discharge bottom**.



#### SS519T2J

With stainless steel cage, **TOP 2 motor** with variable speed and **full discharge bottom**.

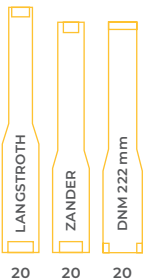


# HONEY EXTRACTORS

## PROFESSIONAL RADIAL

### “AIRONE VARIO 20”

Ø 850 MM



#### 5110R

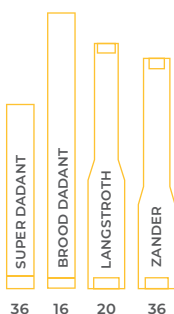
With stainless steel laser-cut cage, handles and full discharge bottom.

#### TECHNICAL SPECIFICATIONS

**Manufacture:** stainless steel AISI 304  
**Manufacture of the cage:** stainless steel AISI 304  
**Supply:** 220V  
**Power:** 1,3 kW  
**Manufacture of the honey gate:** stainless steel  
**Diameter of the honey gate:** 50 mm  
**Diameter of the cage:** 850 mm  
**Height:** 1280 mm  
**Weight :** 88 kg

### “AIRONE VARIO 36”

Ø 850 MM



#### 5085R

With stainless steel laser-cut cage, handles and full discharge bottom.

#### TECHNICAL SPECIFICATIONS

**Manufacture:** stainless steel AISI 304  
**Manufacture of the cage:** stainless steel AISI 304  
**Supply:** 220V  
**Power:** 1,3 kW  
**Manufacture of the honey gate:** stainless steel  
**Diameter of the honey gate:** 50 mm  
**Diameter of the cage:** 850 mm  
**Height:** 1280 mm  
**Weight :** 88 kg



## PROFESSIONAL RADIAL

### “ALBATROS VARIO 42”

Ø 990 MM



#### 5090R

With stainless steel laser-cut cage, handles and full discharge bottom.

#### TECHNICAL SPECIFICATIONS

**Manufacture:** stainless steel AISI 304  
**Manufacture of the cage:** stainless steel AISI 304  
**Supply:** 220V  
**Power:** 1,3 kW  
**Manufacture of the honey gate:** stainless steel  
**Diameter of the honey gate:** 50 mm  
**Diameter of the cage:** 990 mm  
**Height:** 1320 mm  
**Weight :** 97 kg

### “ALBATROS VARIO 54”

Ø 1100 MM



#### 5240R

#### TECHNICAL SPECIFICATIONS

**Manufacture:** stainless steel AISI 304  
**Manufacture of the cage:** stainless steel AISI 304  
**Supply:** 220V  
**Power:** 1,3 kW  
**Manufacture of the honey gate:** stainless steel  
**Diameter of the honey gate:** 50 mm  
**Diameter of the cage:** 1100 mm  
**Height:** 1280 mm  
**Weight:** 143 kg





# HONEY EXTRACTORS

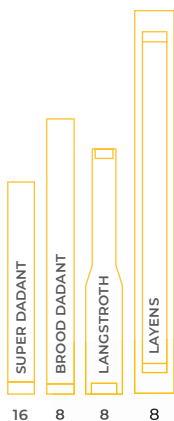
## REVERSIBLES

### “UNIVERSAL”

Ø 1110 MM

The reversible extractor has been designed to facilitate the extraction. The change of rotation of the cage and its special shape of pocket-baskets, makes sure that the frames also reverse; in this way the operator will not have to turn the frames manually after the first cycle of extraction.

This extractor has its peculiarity in the ability to operate both in manual mode, both in automatic mode, using 3 different programs settable as percentage. The reversible honey extractor is particularly suitable for the extraction of very viscous honeys that would be impossible to obtain with a honey extractor equipped with a radial cage. With this reversible honey extractor, all types of honey can be extracted, from the most liquid to the thickest, taking advantage of tangential extraction and combining the advantage of radial extraction.



### 5260R

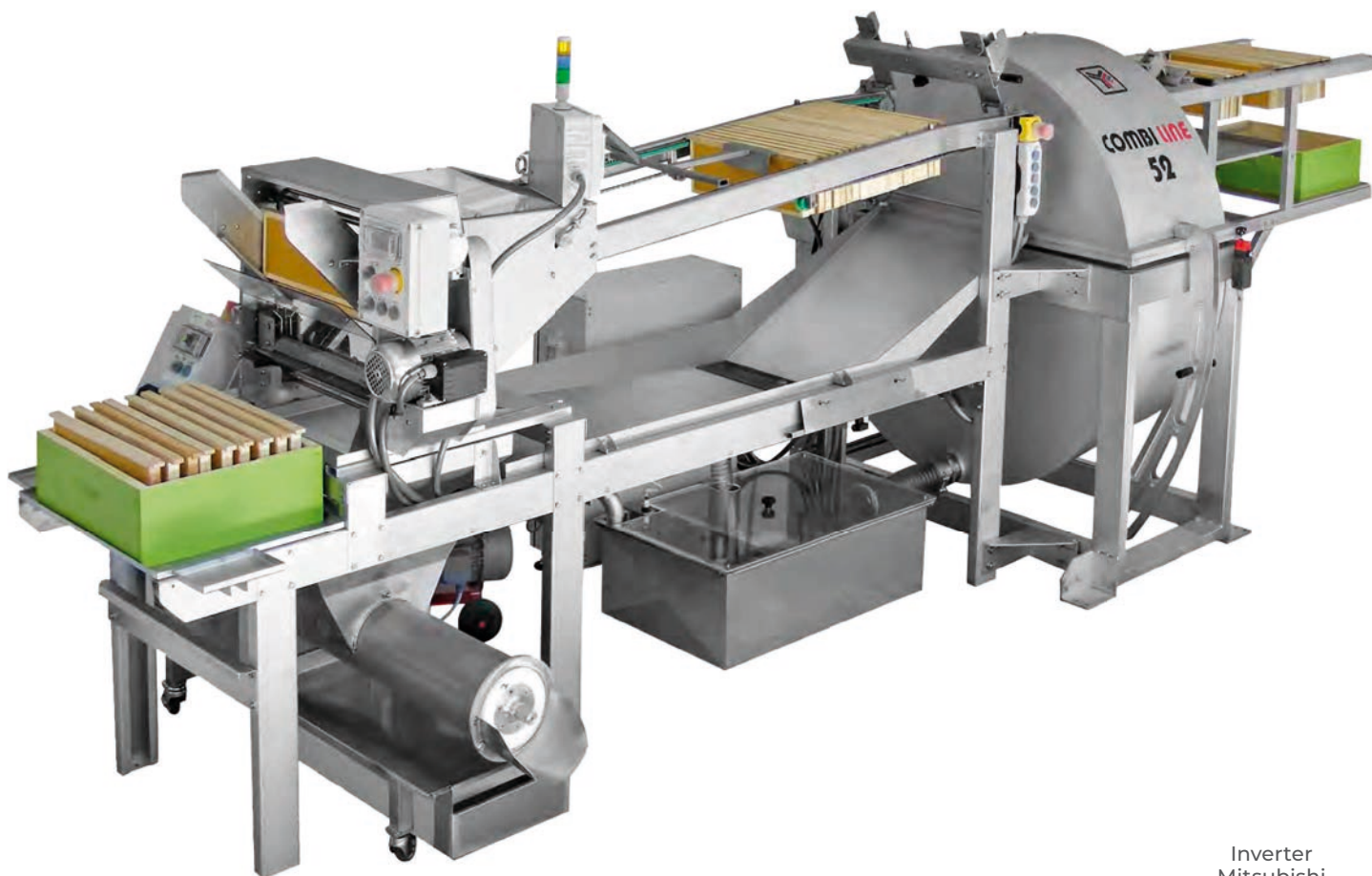
With stainless steel laser-cut cage, handles and full discharge bottom.

#### TECHNICAL SPECIFICATIONS

**Manufacture:** stainless steel AISI 304  
**Manufacture of the cage:** stainless steel AISI 304  
**Supply:** 220V  
**Power:** 1,3 kW  
**Manufacture of the honey gate:** stainless steel  
**Diameter of the honey gate:** 50 mm  
**Diameter of the cage:** 1110 mm  
**Height:** 1300 mm  
**Weight :** 154 kg



## PROFESSIONAL EXTRACTION LINES



Inverter  
Mitsubishi

PLC  
**SIEMENS**

### 55052DB

**HONEY PROCESSING LINE - COMBILINE** complete line of automatic honey extraction which includes: de-boxer lifter, DV5 automatic uncapping machine, motorized conveyor of frames exiting the uncapping machine, horizontal axis honey extractor for **96 Dadant super frames**, plant and motor for automatic positioning in the rotation of the cage, dual-track collector for the frames coming out of the cage. Possible optional: capping press with inverter, honey collection tank, impeller pump, roller conveyor to hold the supers.

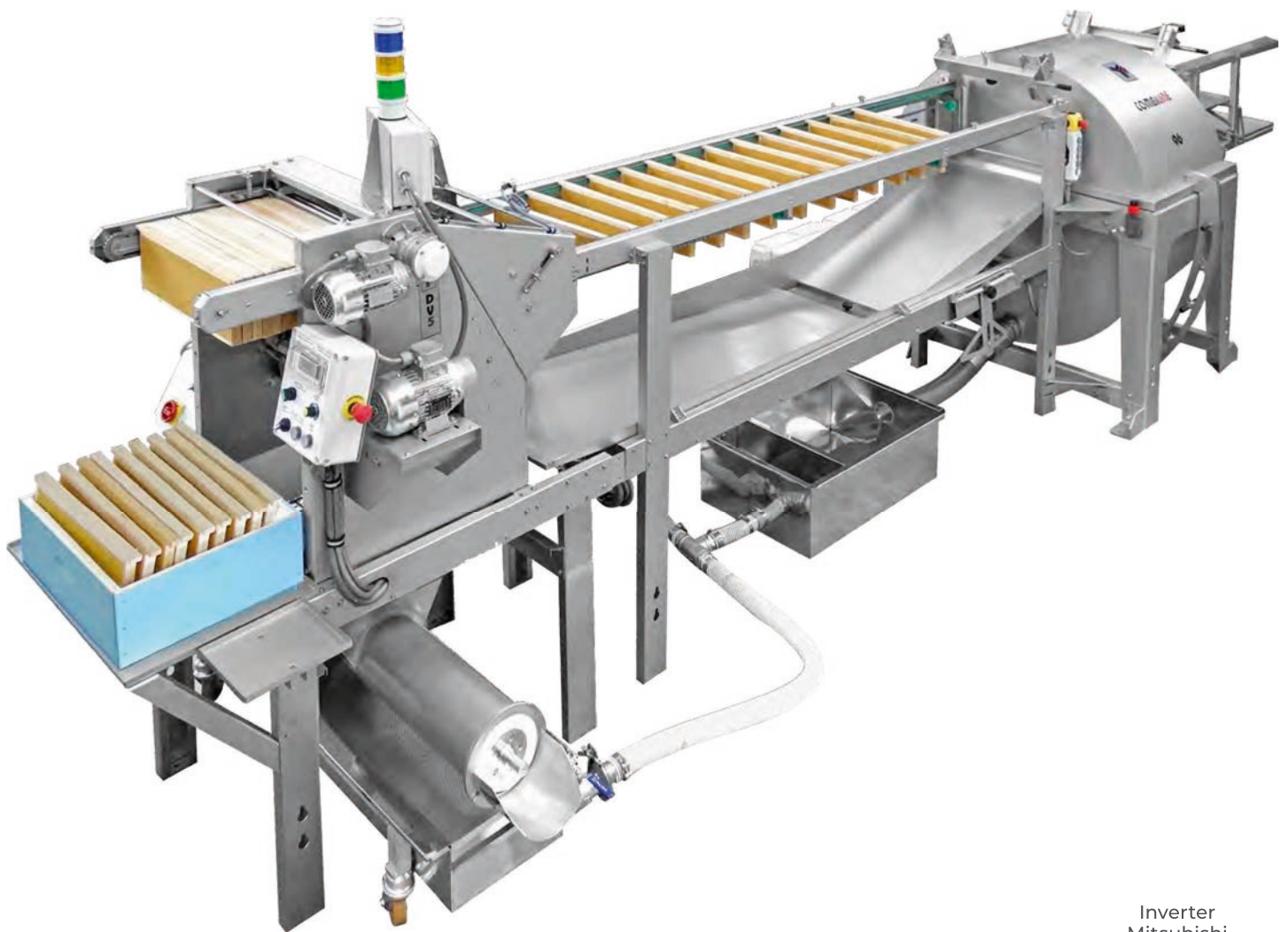
### 55052LG

**HONEY PROCESSING LINE - COMBILINE** complete line of automatic honey extraction which includes: de-boxer lifter, DV5 automatic uncapping machine, motorized conveyor of frames exiting the uncapping machine, horizontal axis honey extractor for **72 Langstroth frames**, plant and motor for automatic positioning in the rotation of the cage, dual-track collector for the frames coming out of the cage. Possible optional: capping press with inverter, honey collection tank, impeller pump, roller conveyor to hold the supers.



# HONEY EXTRACTORS

## PROFESSIONAL EXTRACTION LINES



Inverter  
Mitsubishi

PLC  
**SIEMENS**

### 55096DB

**HONEY PROCESSING LINE - COMBILINE** complete line of automatic honey extraction which includes: de-boxer lifter, DV5 automatic uncapping machine, motorized conveyor of frames exiting the uncapping machine, horizontal axis honey extractor for **96 Dadant super frames**, plant and motor for automatic positioning in the rotation of the cage, dual-track collector for the frames coming out of the cage. Possible optional: capping press with inverter, honey collection tank, impeller pump, roller conveyor to hold the supers.

### 55096LG

**HONEY PROCESSING LINE - COMBILINE** complete line of automatic honey extraction which includes: de-boxer lifter, DV5 automatic uncapping machine, motorized conveyor of frames exiting the uncapping machine, horizontal axis honey extractor for **72 Langstroth frames**, plant and motor for automatic positioning in the rotation of the cage, dual-track collector for the frames coming out of the cage. Possible optional: capping press with inverter, honey collection tank, impeller pump, roller conveyor to hold the supers.





## PROFESSIONAL EXTRACTION LINES



### 6682L

**DOUBLE-WALLED SUMP TANK** heated, made of stainless steel for COMBILINE (ref. 55052DB, 55052LG, 55096DB, 55096LG).

## SPARE PARTS AND ACCESSORIES



### 4998

**RUBBER BALANCE KIT** to be screwed to the honey extractor's legs - 3 pieces - Ø 50x20 mm / M 10.



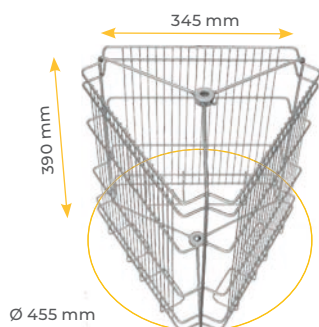
### 4999

**BALANCE KIT** with 3 wheels for electrical honey extractor - M 8.



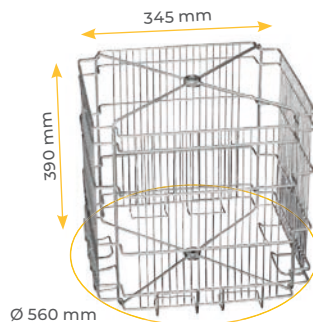
### 4710521

**"J" LEG** for honey extractors Ø 520 - 625 mm.



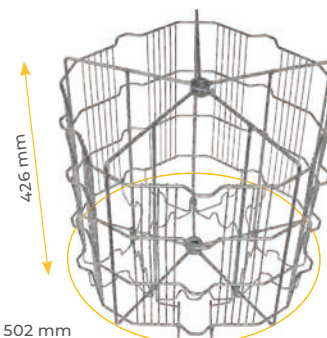
### 4527600

**"NIBBIO" TANGENTIAL CAGE** in stainless steel.



### 4567600

**"FALCO" TANGENTIAL CAGE** in stainless steel.



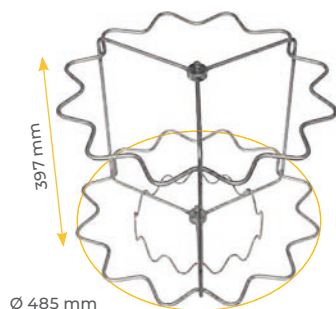
### GF0519

**"JOLLY" UNIVERSAL CAGE** in stainless steel.



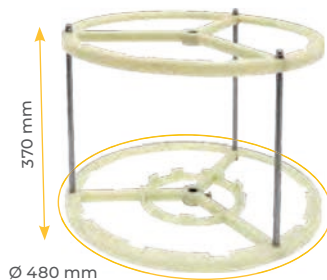
# HONEY EXTRACTORS

## SPARE PARTS AND ACCESSORIES



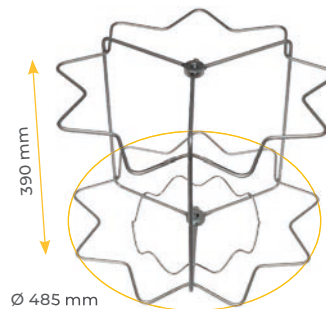
**4687600**

**"RADIAL 12" RADIAL CAGE** in stainless steel.



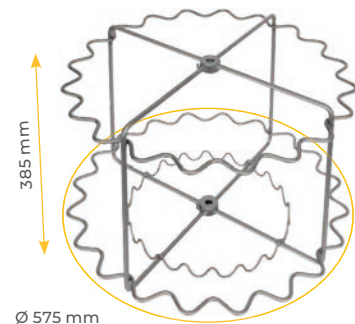
**4690600**

**"RADIALNOVE" RADIAL CAGE** in plastic food grade.



**4697601**

**"RADIALNOVE" RADIAL CAGE** in stainless steel.



**4737601**

**"TUCANO 20" RADIAL CAGE** in stainless steel.



**4797**

**ADDITIONAL STAINLESS STEEL GRID** to convert the radial extractors into tangential - for **"Radialnove"** and **"Tucano"** - Ø 520 > 625 mm.



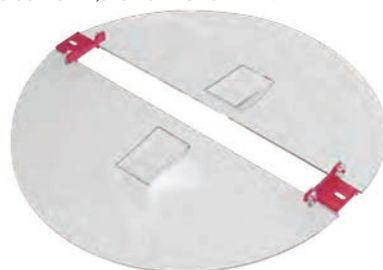
**4809**

**ADDITIONAL STAINLESS STEEL GRID** for **"Flamingo"** extractor - Ø 700 mm..



**4820A**

**ADDITIONAL NYLON NET BASKET** Dadant and Langstroth. The weight inside the extractor must be balanced: 2 opposing baskets in the extractors with 2/4 cage or 3 baskets in the 3/6 cages - 250x370 mm.



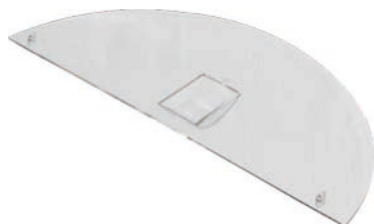
**4830**

**COUPLE OF TRANSPARENT POLYCARBONATE HINGED LIDS** for extractors Ø 625 mm.



**4850**

**TRANSPARENT POLYCARBONATE HINGED LIDS** for extractors Ø 520 mm.



**4690720**

**TRANSPARENT POLYCARBONATE HALF-LID** for **"Radialnove"** extractor Ø 520 mm.



**4869**

**MANUAL DRIVE WITH NYLON CONICAL GEARS** for extractors Ø 520 mm.



**4869000**

**MANUAL DRIVE WITH NYLON CONICAL GEARS** with pivot and bar, for extractors Ø 520 mm.



## SPARE PARTS AND ACCESSORIES



**4920**

PLASTIC FOOD GRADE  
CONICAL GEARS Ø 85 mm.



**4940**

PLASTIC FOOD GRADE  
CONICAL GEARS Ø 110 mm.



**4891001**

MANUAL DRIVE WITH HELICAL  
GEARS with pivot and bar for  
extractors Ø 380 mm.



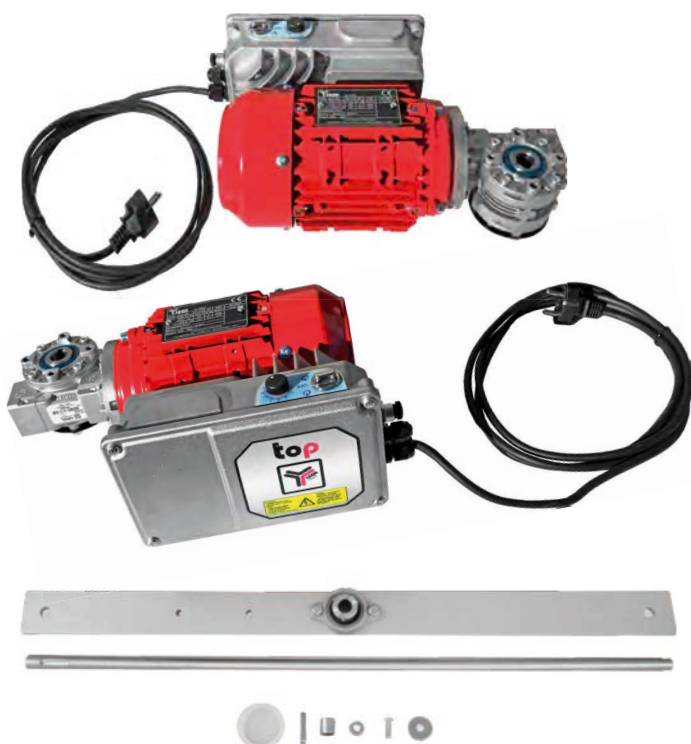
**4892001**

MANUAL DRIVE WITH HELICAL  
GEARS with pivot and bar for  
extractors Ø 520 mm.



**4893001**

MANUAL DRIVE WITH HELICAL  
GEARS with pivot and bar for  
extractors Ø 625 mm.



Central pivots supplied with the transmissions are interchangeable with the extractors produced from 2012 onwards. For previous versions please contact our after-sale service at [service@legaitaly.com](mailto:service@legaitaly.com).

**5409T2**

TOP 2 MOTOR BAR for Ø 520 mm extractors (to be assembled).

**5410T2**

TOP 2 MOTOR BAR for Ø 625 mm extractors (to be assembled).





# HONEY EXTRACTORS

## SPARE PARTS AND ACCESSORIES



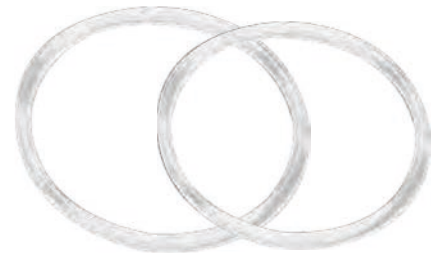
**6341**

**HONEY GATE** in food-grade plastic without back nut - Ø 40 mm, 1"½ M.



**6351**

**HONEY GATE** in food-grade plastic with plastic back nut and grooves for the total emptying of honey to be mounted on the bottom of the ripener without the need to weld a threaded bushing - 40 mm, 1"½ F.



**A61120147**

**EXTERNAL GASKET** in food grade silicone, round section - Ø 50 mm.

**6349**

**HONEY GATE** in food-grade plastic with plastic back nut - Ø 40 mm, 1"½ M.

**A61123168**

**HOLDING GASKET** in food grade silicone, round section - Ø 48 mm.



**6370**

**HONEY GATE** in stainless steel, without back nut - Ø 40 mm, 1"½ M.



**6409**

**HONEY GATE "BUTTERFLY-VALVE"** in stainless steel for machines - Ø 40 mm, 1"½ M - 1"½ F.



**6487**

**BACK NUT** in stainless steel for 1"½ for honey gates Ø 40 mm.

**6390**

**HONEY GATE** in stainless steel, without back nut - Ø 50 mm, 2" M.

**6410**

**HONEY GATE "BUTTERFLY-VALVE"** in stainless steel for machines - Ø 50 mm, 2" M - 2" F.



**6489**

**BACK NUT** in polyamide for 1"½ for honey gates Ø 40 mm.



## HONEY RIPENERS AND HONEY BLENDERS

The **honey ripener** is a container used to **store honey** extracted from the frames before proceeding with the packaging operation. Our honey ripeners are manufactured in stainless steel and come with honey gate based at the base from which you can draw the honey or connect it to a tube and a pump.

This is an indispensable product, made by several size and capacity for the beekeepers. The ability of our honey ripeners range from 50 kg up to a maximum of 2000 kg for professional ones. We also have **filters**, **spare parts** and **specific supports** for the various types of article.

The **blender** is a tool widely used in beekeeping: it mixes honeys of different colors and **uniforms** the mass to obtain compounds homogeneous. They are specifically composed by a double-walled cylindrical stainless steel container with cavity and bottom with total discharge. Again, there are different capacities to meet different needs.

RIPENERS, STRAINERS AND SUPPORTS	86
PROFESSIONAL RIPENERS	89
FILTERS AND SPARE PARTS	89
BLENDERS	91

## HONEY RIPENERS AND HONEY BLENDERS





# HONEY RIPENERS AND HONEY BLENDERS



## RIPENERS, STRAINERS AND SUPPORTS

THE STAINLESS STEEL OF OUR RIPENERS IS **AISI 304**

**50 KG**

FLAT  
BOTTOM



+ HANDLES



+ HERMETIC  
LID

+ HANDLES



**6000**

**HONEY RIPENER 50 KG**  
in stainless steel, Ø 310 mm, 515 mm  
high, with a Ø 40 mm food-grade plastic  
honey gate and lid with knob.

**6000010**

**HONEY RIPENER 50 KG**  
in stainless steel, Ø 310 mm, 515 mm  
high, with a Ø 40 mm food-grade plastic  
honey gate, **handles** and lid with knob.

**6000030**

**HONEY RIPENER 50 KG**  
in stainless steel Ø 310 mm, 515 mm  
high, with a Ø 40 mm food-grade plastic  
honey gate, **hermetic lid** with knob and  
**handles**.

**100 KG**

FLAT  
BOTTOM



+ HANDLES



+ HERMETIC  
LID

+ HANDLES



**6020**

**HONEY RIPENER 100 KG**  
in stainless steel, Ø 380 mm, 665 mm  
high, with a Ø 40 mm food-grade plastic  
honey gate and lid with knob.

**6020010**

**HONEY RIPENER 100 KG**  
in stainless steel, Ø 380 mm, 665 mm  
high, with a Ø 40 mm food-grade plastic  
honey gate, **handles** and lid with knob.

**6020030**

**HONEY RIPENER 100 KG**  
in stainless steel, Ø 380 mm, 665 mm  
high, with a Ø 40 mm food-grade plastic  
honey gate, **hermetic lid** with knob and  
**handles**.

**200 KG**

FLAT  
BOTTOM



+ HANDLES



+ HERMETIC  
LID

+ HANDLES



**6040**

**HONEY RIPENER 200 KG**  
in stainless steel Ø 470 mm, 840 mm  
high, with a Ø 40 mm food-grade plastic  
honey gate and lid with knob.

**6040010**

**HONEY RIPENER 200 KG**  
in stainless steel, Ø 470 mm, 840 mm  
high, with a Ø 40 mm food-grade plastic  
honey gate, **handles** and lid with knob.

**6040030**

**HONEY RIPENER 200 KG**  
in stainless steel, Ø 470 mm, 840 mm  
high, with a Ø 40 mm food-grade plastic  
honey gate, **hermetic lid** with knob and  
**handles**.



# HONEY RIPENERS AND HONEY BLENDERS



## RIPENERS, STRAINERS AND SUPPORTS

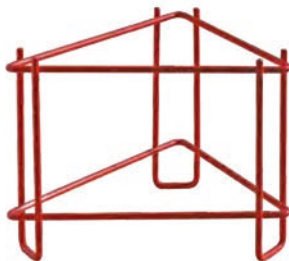


**400 KG**

**6060**

**HONEY RIPENER 400 KG**  
in stainless steel, Ø 625 mm, 970 mm  
high, with a Ø 40 mm food-grade plastic  
honey gate and lid with knob.

**METAL SUPPORT**  
varnished in red.



**6001**

For ripener 50 kg.

**6021**

For ripener 100 kg.

**6041**

For ripener 200 kg.

**6061**

For ripener 400 kg.

**6071**

For ripener 500 kg.



**6081**

**SUPPORT FOR RIPENER 1000 KG**  
in sturdy stainless steel tubular structure.



**500 KG**

**6070**

**HONEY RIPENER 500 KG**  
in stainless steel, Ø 725 mm, 1000 mm  
high, with a Ø 50 mm stainless steel  
honey gate and lid with knob.

**METAL SUPPORT**  
in stainless steel sheet.



**6002X**

For ripener 50 kg.

**6022X**

For ripener 100 kg.

**6042X**

For ripener 200 kg.



**1000 KG**

**6080**

**HONEY RIPENER 1000 KG**  
in stainless steel, Ø 940 mm, 980 mm  
high, with a Ø 50 mm stainless steel  
honey gate and lid with knob.

**FULL DIAMETER  
HONEY STRAINER**  
in stainless steel.



**6005**

For ripener 50 kg - Ø 310 mm.

**6025**

For ripener 100 kg - Ø 378 mm.

**6045**

For ripener 200 kg - Ø 470 mm.

**6065**

For ripener 400 kg - Ø 625 mm.



# HONEY RIPENERS AND HONEY BLENDERS

## RIPENERS, STRAINERS AND SUPPORTS

THE “ZERO” RIPENERS IN AISI 304 STAINLESS STEEL have a **special shaped bottom with total drainage** that allows the honey gate to be welded at the lowest point of the bottom, to obtain a **total recovery of the internal honey**. The metal support is essential for the stability of the ripener.



**50 KG**

**5800**

“ZERO” RIPENER 50 KG  
in stainless steel, Ø 310 mm, 527 mm  
high, with **food-grade plastic honey gate**  
and **full discharge bottom**.

**5803**

“ZERO” RIPENER 50 KG  
in stainless steel, Ø 310 mm, 527 mm  
high, with **stainless steel honey gate**  
and **full discharge bottom**.

**5801**

METAL SUPPORT for 50 kg  
“ZERO” ripener, varnished in red.



**100 KG**

**5820**

“ZERO” RIPENER 100 KG  
in stainless steel, Ø 378 mm, 675 mm  
high, with **food-grade plastic honey gate**  
and **full discharge bottom**.

**5823**

“ZERO” RIPENER 100 KG  
in stainless steel, Ø 378 mm, 675 mm  
high, with **stainless steel honey gate**  
and **full discharge bottom**.

**5821**

METAL SUPPORT for 100 kg  
“ZERO” ripener, varnished in red.



**250 KG**

**5840**

“ZERO” RIPENER 250 KG  
in stainless steel, Ø 520 mm, 840 mm  
high, with **stainless steel honey gate**  
and **full discharge bottom**.

**5841**

METAL SUPPORT for 250 kg  
“ZERO” ripener, varnished in red.



**500 KG**

**5870**

“ZERO” RIPENER 500 KG  
in stainless steel, Ø 700 mm, 980 mm  
high, with **stainless steel honey gate**  
and **full discharge bottom**.

**5871**

METAL SUPPORT for 500 kg  
“ZERO” ripener, varnished in red.



**800 KG**

**6075**

“ZERO” RIPENER 800 KG  
in stainless steel, Ø 850 mm, 970 mm high,  
with **stainless steel honey gate** and **full discharge bottom**.

**5881**

METAL SUPPORT for 800 kg “ZERO”  
ripeners, varnished in red.

FULL DIAMETER  
HONEY STRAINER  
for “ZERO” ripener.



**6290**

For ripener 250 kg - Ø 520 mm.

**6291**

For ripener 500 kg - Ø 700 mm.

# HONEY RIPENERS AND HONEY BLENDERS



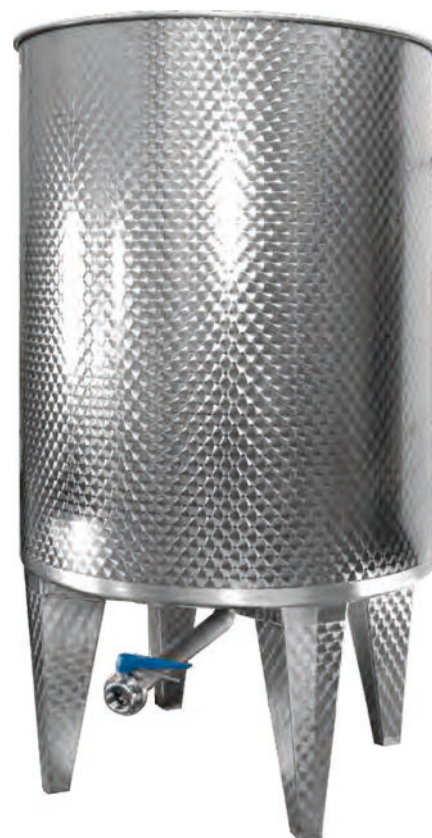
## PROFESSIONAL RIPENERS



**1000 KG**

**6100**

**PROFESSIONAL RIPENER 1000 KG** in stainless steel with **full discharge bottom**,  $\varnothing 950$  mm, 1980 mm high, lid with handles and **stainless steel butterfly valve**  $\varnothing 50$  mm that allows the connection to a pump or a dosing machine.



**2000 KG**

**6120**

**PROFESSIONAL RIPENER 2000 KG** in stainless steel with **full discharge bottom**,  $\varnothing 1300$  mm, 1980 mm high, lid and **stainless steel butterfly valve**  $\varnothing 50$  mm that allows the connection to a pump or a dosing machine.

## FILTERS AND SPARE PARTS



**6200**

**HONEY STRAINER** in stainless steel for 50 and 100 kg ripeners.



**6220**

**HONEY STRAINER** in stainless steel for 200 and 400 kg ripeners.



**6207**

**DOUBLE SIEVE** in stainless steel for ripeners up to  $\varnothing 400$  mm.





# HONEY RIPENERS AND HONEY BLENDERS

## FILTERS AND SPARE PARTS



**6240**

**STOCKING STRAINER** in stainless steel with nylon bag for **50 and 100 kg** ripeners.



**6260**

**STOCKING STRAINER** in stainless steel with nylon bag for **200 and 400 kg** ripeners.



**6242**

**LITTLE DOUBLE STRAINER** in stainless steel with nylon bag and pre-strainer for ripeners **50/100 kg**.



**6242200**

**UPPER PART MESHED FILTER** in stainless steel for little double strainer (ref. 6242).



**6262**

**BIG DOUBLE STRAINER** in stainless steel with nylon bag and pre-strainer for ripeners **200/400 kg**.



**6262200**

**UPPER PART MESHED FILTER** in stainless steel for big double strainer (ref. 6262).

**6280400**

**PERIMETRAL PROTECTION** for "Menna" filter.



**6281**

**"MENNA" FILTER** on 1500 mm long support without perimetral protection, capacity 230 kg.



**6281P**

**"MENNA" FILTER** on 1500 mm long support with perimetral protection, capacity 230 kg.

# HONEY RIPENERS AND HONEY BLENDERS



## FILTERS AND SPARE PARTS



**6250**

SPARE MESH BAG for stocking strainer small model, 50 and 100 kg.



**6270**

SPARE MESH BAG for stocking strainer big model, 200 and 400 kg and for "Menna" filter.



**6252**

SPARE MESH BAG for little double strainer (ref. 6242).



**6272**

SPARE MESH BAG for big double strainer (ref. 6262).

## BLENDERS



**100 KG**

**6552**

"MINIMIX" HONEY BLENDER 100 KG with single wall stainless steel tank.



**100 KG**

**6555**

HONEY BLENDER 100 KG with double wall and electronic control - MINIMIX 2P.



# HONEY RIPENERS AND HONEY BLENDERS

## BLENDERS

A good mixing is obtained by means of a device called honey blender, which consists of a cylindrical container with a total discharge bottom in which, by means of a stirrer moved by a gear motor, the two different varieties of honey are amalgamated.

The blender is also excellent for mixing honeys of different colors, to obtain homogeneous batches.

Our blenders consist of a double-walled stainless steel container with cavity, bottom with total drainage and ball valve. The cavity contains water heated by an electric resistance, which has the task of keeping the honey mass warm.

The honey is blended by special blades with a marine propeller profile, adjustable in height along an oblique shaft and moved by an electric gear motor.

A transparent hinged lid closes the container at the top and is equipped with an electric safety lock against opening during work.

We can also mount speed variators that allow you to work at any speed between 15 and 100 rpm.

**300 KG**

**600 KG**

**1000 KG**

**2000 KG**



Support is not included.

**6561V**

**HONEY BLENDER 300 KG** with double wall, single-phase and electronic control with inverter.

**6563V**

**HONEY BLENDER 600 KG** with double wall, single-phase and electronic control with inverter.

**6564**

**HONEY BLENDER 1000 KG** with double heated wall and **three-phase** engine. *On request with mechanical speed variator.*

**6566**

**HONEY BLENDER 2000 KG** with double heated wall and **three-phase** engine. *On request with mechanical speed variator.*



**6590**

**SHOVEL** made in stainless steel for crystallized honey. Sturdy tool with plastic handle - 410 mm.



**6540**

**HONEY CREAMER** made in stainless steel. It may be necessary to mix and uniform small batches of honey in containers of 50-100 kg. This tool, equipped with a long handle, is operated with an alternating movement inside the container to obtain mixing - 750 mm.





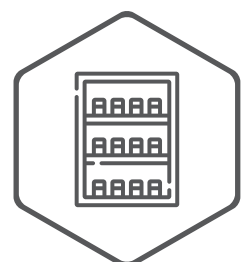
## HONEY TREATMENT

For the **treatment of honey** we have a wide range of products available: **hot chambers**, **honey melting cabinets** and **honey liquifiers** to dissolve the crystallized honey, **honey driers** to remove the excess moisture of the honey and a wide range of measuring instruments such as the **myelometer**, the **refractometer** and the **colorimeter**.



HONEY PUMPS	94
ACCESSORIES FOR HONEY PUMPS	95
HONEY TREATMENT	96
MEASUREMENT TOOLS	99
SUMP TANKS	99
HONEY DRIERS	100

## HONEY TREATMENT





# HONEY TREATMENT

## HONEY PUMPS

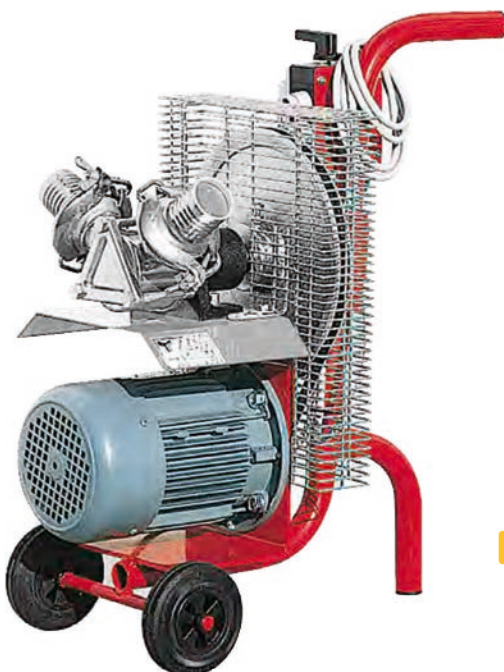
**HONEY PUMP** of stainless steel body and G90 impeller made in neoprene. The pump is self-priming, equipped with a **single-phase** or **three-phase** electric motor and has a slow rotation speed of 195 rpm in both directions. Everything is mounted on a trolley with rubber wheels.

**6600**

Three-phase 380 V.

**6620**

Mono-phase 220 V.



**6609003**

IMPELLER G90 in neoprene for honey pump.



**6640**

**HONEY PUMP** stainless steel (body only) with impeller G90 pulley, Ø 280 mm and two stainless steel fittings for pipes Ø 50 mm.



**6602**

**PROFESSIONAL HONEY PUMP** with electronic speed variator, large capacity, for beekeepers who need to move large quantities of honey in a short time. It has a stainless steel body and a Ø 120 mm rotor in food-grade neoprene, complete with two stainless steel clamp fittings for connection to the Ø 60 mm spiral-reinforced plastic pipes. It is self-priming, has a single-phase electric motor with a robust mechanical reducer served by an inverter that allows an accurate and simple reduction of the rotation speed between 40 and 240 RPM in both directions, in order to be adapted to the viscosity or delicacy of the product. The whole unit, very compact, is mounted on a stainless steel trolley with handle, control panel with inverter in a comfortable and easy to use position and four wheels, two of which with brakes.



## ACCESSORIES FOR HONEY PUMPS



**6614**

**LEVEL INDICATOR** the previous float system is replaced with a much more advanced one. This works ultrasound: it starts the pump when the honey has reached the level chosen **with horn**.

**6615**

**LEVEL INDICATOR** with ultrasound sensor, it starts the pump when the honey has reached the chosen level. It's the same of the ref. 6614 but **without horn**.

**6660**

**SPIRAL REINFORCED PIPE** for honey pump. In food-grade plastic, **spiraled with ivory PVC** - Ø 50 mm.

**6668**

**SPIRAL REINFORCED PIPE** for honey pump. In food-grade plastic, **spiraled with steel** - Ø 60 mm.



**6674**

**SUPPORT** in stainless steel for plastic food grade pipe for ripener and blender.

**6660065**

**FASTENING** in stainless steel for pipe - Ø 50 mm.

**6660075**

**FASTENING** in stainless steel for pipe - Ø 60 mm.

**6690**

**LARGE TERMINAL "U" SHAPED** with connection bracket, in 50 mm stainless steel tube to hang the hose coming from the pump on the edge of the ripener and bring the honey to the center of the filter.

**6670**

**SMALL TERMINAL "U" SHAPED** in stainless steel to connect to the honey pump's pipe - Ø 50 mm.







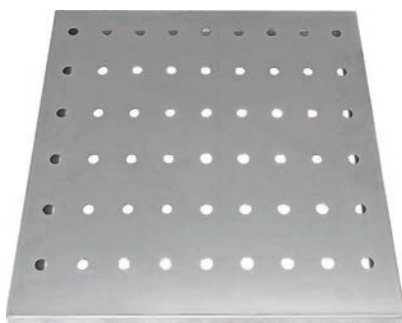
# HONEY TREATMENT

## HONEY TREATMENT



### 6705

**SMALL WARMING CABINET** in stainless steel to liquify the crystallised honey. It can contain 2 25 kg tins or 72 1 kg jars. Isolated structure, glass door with magnetic locking system, thermometer and thermostat with digital display (same as ref. 8230).



### 6705300

**PERFORATED DRAWERS** for warming cabinet - 392x365x20 mm.



### 6710L

#### ELECTRICALLY HEATED WARMING CABINET

The warming cabinet has an electrically welded load-bearing structure that supports pre-painted sheet metal panels with expanded polyurethane insulation. Inside it can be placed **2 drums with 300 kg** of honey, ripeners up to 400 kg, at least 24 tins with 25 kg or an equivalent amount of honey already bottled.

There are two heating modules inside the hot chamber. Each of these carries a 1500 W finned resistance and a tangential fan for air recirculation. The temperature is controlled by a probe located inside the cabinet and a digitally readable thermostat on the control panel. To allow handling even in the absence of a forklift, the machine is equipped with wheels and has been designed without a bottom. The drums to be heated remain stationary and the warming cabinet is pushed over and closed. There is no appreciable dispersion of hot air between walls and floor thanks to a particular sealing system.

#### TECHNICAL FEATURES

**External dimensions:** 1610x1200x1490 mm

**Internal dimensions:** 1300x890x1190 mm

**Capacity:** 2 drums of 300 kg, 24 cans of 25 kg

**Weight:** 150 kg

**Maximum total absorption:** 3050 W

**Air circulation:** 560 m<sup>3</sup> / h forced with fan

**Instrumentation:** digital thermostat



## HONEY TREATMENT

**6715L****ELECTRICALLY HEATED SMALL WARMING CABINET**

The warming cabinet has an electrically welded load-bearing structure that supports pre-painted sheet metal panels with expanded polyurethane insulation. Inside it can be placed **1 drum with 300 kg** of honey, ripeners up to **400 kg**, at least 24 tins with 25 kg or an equivalent amount of honey already bottled. Air heating is produced by an electrical resistance of **2000 W**, while the circulation of hot air is produced by a tangential electric fan with a low electrical absorption.

**TECHNICAL FEATURES**

**External dimensions:** 1000x1000x1310 mm

**Internal dimensions:** 685x720x1120 mm

**Capacity:** 1 x 300 kg drum, 8-12 x 25 kg tins

**Weight:** 65 kg

**Maximum total absorption:** 2050 W

**Air circulation:** 280 m<sup>3</sup> / h forced with fan

**Instrumentation:** digital thermostat



## HONEY TREATMENT

### HONEY TREATMENT



**6722**

**ELECTRIC CABLE HEATED BY RESISTANCE** to melt crystallised honey in ripeners or tins, with thermostat - 13 mt long.



**6810**

**PAIL HOLDER** in stainless steel to adjust the tin to every container.



**6890**

**WORKSHOP TABLE** consisting of two satin-finished stainless steel tops and 4 adjustable feet - 1200x700x900 mm.

### ELECTRICALLY HEATED HONEY LIQUIFIERS

Composed of a flat, circular electrical resistance, heated to a temperature suitable to return the crystallised honey to its original liquid state to allow the potting. The melters are placed on the surface of the container, connected to the socket and put into operation by turning the temperature regulator located in the control box.



**6735M**

For **25 kg** tins and **50 kg** ripeners, with handles - Ø 250 mm.



**6736M**

For **100 kg** ripeners, with handles - Ø 330 mm.



**6737M**

For **200 kg** ripeners, with handles - Ø 420 mm.





## MEASUREMENT TOOLS



**6751**

**MYELOMETER** Optical refractometer for the determination of the humidity present in honey. It has two scales indicating the moisture and sugar content.



**6753**

**OPTICAL REFRACTOMETER HB90** three scale.



**6753900**

**SPARE KIT** for calibrating the refractometer.



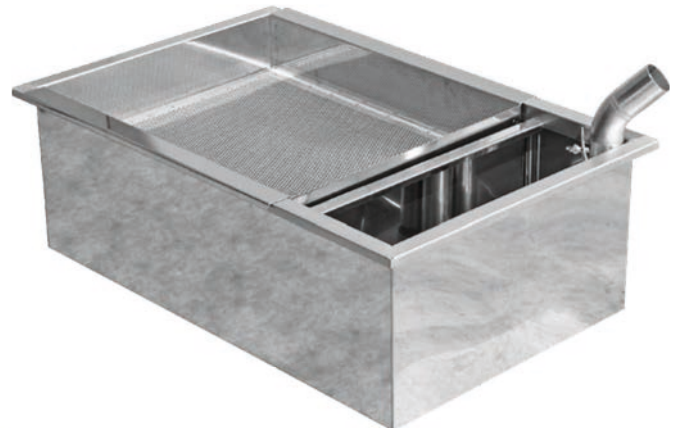
**6755**

**DIGITAL REFRACTOMETER** for immediate reading of the humidity of the honey on the display, very light, pocket size and battery powered.

## SUMP TANKS

**6680**

**SINGLE WALL SUMP TANK** in stainless steel for honey pump - 850x560x290 mm. Completely manufactured with **AISI 304** stainless steel to collect the honey directly at the exit from the honey extractor and immediately free it from the largest impurities. The upper part is in fact formed by a large removable roughing filter. The tank is then equipped with a vertical partition open underneath which, due to the difference in specific weight, performs a second cleaning of the honey since it retains the light residues that have come to the surface. It is complete with a stainless steel tube Ø 50 mm for sucking the honey by means of a pump.



**6682**

**SUMP TANK DOUBLE-WALLED** in stainless steel, complete with plexiglass cover. The water that is put in the interspace is then heated by an electric resistance 2000 W with thermostat from 30-120° C. Honey leaves the biggest impurities in the preliminary filter and gets cleaned by passing through 5 bulkheads - 1300x515x300 mm.



# HONEY TREATMENT

## HONEY DRIERS

The honey drier is a device designed to remove excessive moisture from honey. The basic principle is to create a large surface of honey that is subjected to a forced current of dry air. A horizontal axis, on which stainless steel disks are fixed, rotate slowly inside a tank containing the honey to be treated. Honey forms a film on the two sides of the disks and the dry air absorbs the humidity: this occurs in a very narrow space, closed by a dome and at room temperature. This allows us to guarantee that neither the HMF nor the diastasis of treated honey get modified, but only the water content.



### 50 KG

#### 6792L

**HONEY DRIER** with rotating disks - 50 kg.

#### TECHNICAL FEATURES

**Dimensions:** 650x940x720 mm

**Empty weight:** 54 kg

**Voltage:** 220 V

**Total absorption:** 1100 W

**Resistance:** 1000 W

**Fans:** 1

**Air movement volume:** 100 m<sup>3</sup>/h

**Minimum weight of honey that can be processed:** 3 kg

**Maximum workable honey weight:** 53 kg

**Discs:** 10

**Rotation speed:** 1 g/1'

**Yield:** 1 %/h



#### 6792L150

**SUPPORT** for honey drier - 50 kg.



### 150 KG

#### 6793L

**HONEY DRIER** with rotating disks - 150 kg.

#### TECHNICAL FEATURES

**Dimensions:** 920x1220x1220 mm

**Empty weight:** 140 kg

**Voltage:** 220 V

**Total absorption:** 2500 W

**Resistance:** 2x1000 W

**Fans:** 2

**Air movement volume:** 400 m<sup>3</sup>/h

**Minimum weight of honey that can be processed:** 5 kg

**Maximum workable honey weight:** 154 kg

**Discs:** 15

**Rotation speed:** 1 g/1'

**Yield:** 0.5 %/h



## HONEY DRIERS



**300 KG**

**6794L**

**HONEY DRIER** with rotating disks - **300 kg.**

### TECHNICAL FEATURES

**Dimensions:** 950x1500x1450 mm

**Empty weight:** 230 kg

**Voltage:** 220 V

**Total absorption:** 3500 W

**Resistance:** 2x1500 W

**Fans:** 2

**Air movement volume:** 400 m<sup>3</sup>/h

**Minimum weight of honey that can be processed:** 10 kg

**Maximum workable honey weight:** 308 kg

**Discs:** 16

**Rotation speed:** 1 g/1'

**Yield:** 0.33 %/hw



**1000 KG**

**ON REQUEST**

**6795**

**HONEY DRIER** with rotating disks - **1000 kg.**

### TECHNICAL FEATURES

**Dimensions:** 1550x2020x1600 mm

**Empty weight:** 580 kg

**Voltage:** 380 V

**Total absorption:** 6500 W

**Resistance:** 4x1500 W

**Fans:** 4

**Air movement volume:** 800 m<sup>3</sup>/h

**Minimum weight of honey that can be processed:** 24.3 kg

**Maximum workable honey weight:** 1055 kg

**Discs:** 30

**Rotation speed:** 1 g/1'

**Yield:** 0.25 %/h







## PACKAGING

**Honey packaging** is a fundamental activity that must be carried out with the utmost precision in compliance with rules and regulations. For automatic processing it becomes necessary the use of **dosing, labelling** and **capping machines**. Of different sizes to suit both the beekeeper hobbyist and professional, we have a wide range of items available to pack the honey ready to be released on the market.

FILLING UP MACHINES	104
HONEY PACKAGING	105
AUTOMATIC FILLING UP LINES	108



## PACKAGING





## PACKAGING

### FILLING UP MACHINES

#### SMART 2 FILLING MACHINE

PLC + Display: **SIEMENS**

350 POTS PER HOUR (500 GR), accuracy  $\pm 3$  gr



##### 6952L

With tabletop for the pot and micro control in contact.



##### 6953L

On a motorised stainless steel rotating loader  $\varnothing 625$  mm with automatic operation.



##### 6954L

On motorised rotating table  $\varnothing 1000$  mm with automatic operation. The rotating table is made of white food-grade polyethylene and guarantees good autonomy, given the large capacity of jars. The rotating table is mounted on a supporting structure in tubular stainless steel with lockable articulated wheels that allow it to be quickly positioned in any part of the laboratory. The presence of the jar under the dosing nozzle and the subsequent filling are managed by a capacitive presence sensor.

#### TECHNICAL FEATURES valid for SMART 2 FILLING MACHINES 6952L - 6953L - 6954L

Maximum size, body only (BxPxH): 220x200x350 mm

Weight: 10 kg

Maximum dosing height, calculated from the top to the dosing nozzle: 190 mm

Power supply: 220 V

Output power supply: 24 DC V

Absorption: 10 A

Number of revolutions of the electronically variable gears: 20-100 g / 1'

Noise emission: <70 dB

Minimum suction height: -1000 mm

Operating temperature \*\*: max 30° / min 18° C

Min - max dosed: 20-9999 gr

Accuracy \*\*:  $\pm 3$  gr

Max draft (length of suction pipe with non-return valve) \*\*: 1500 mm

\*\* Variable data depending on the viscosity of the honey.





## FILLING UP MACHINES



**6988**

**ROTATING LOADER** for **SMART 2** honey filling machine - Ø 625 mm.



**6989**

**ROTATING TABLE** for **SMART 2** honey filling machine - Ø 1000 mm.

**6952P400**

**KIT SMART** for adapting filling machine to rear suction.

## HONEY PACKAGING



**4440**

**BUCKET TO COLLECT THE HONEY 25 kg** with handle and lid.



**4444**

**BUCKET TO COLLECT THE HONEY 25 kg** with handle, lid and **honey gate** Ø 40 mm.



**6800**

**ROUND TIN** of 25 kg in metal protected inside with food-grade lacquer. It has a cover and a closing lever collar.



**6808**

**ROUND TIN** in food-grade plastic of 45 kg with snap-on lid with collar and handles.



**6808R**

**ROUND TIN** in food-grade plastic of 45 kg with lid by pressure with collar, handles and **honey gate** Ø 40 mm.



**6809**

**ROUND TIN** in food-grade plastic of 25 kg with snap-on lid with collar and handle.



**6809R**

**ROUND TIN** in food-grade plastic of 25 kg with lid by pressure with collar, handle and **honey gate** Ø 40 mm.



**6819**

**ROUND TIN** in food-grade plastic of 10 kg with snap-on lid with collar and handle.



# PACKAGING

## HONEY PACKAGING



**6821**

**ROUND TIN** in food-grade plastic of **5 kg** with snap-on lid with collar and handle.



**6815**

**STAINLESS STEEL DRUM** of **300 kg** with completely removable cover and fixed by means of a lever clamp - Ø 570 mm, height 920 mm.



**6816**

**TRUNK-CONICAL DRUM** of **300 kg** with completely removable cover and fixed by means of a lever clamp.



**6772**

**DISPENSER "QUEEN"** for liquid honey, to be screwed on the Ø 70 mm twist-off cap for the **500 gr** jar and Ø 82 mm twist-off cap for the **1000 gr** jar.



**6774**

**"SQUEEZER" DISPENSER** in food-grade plastic **250 gr** / **180 cc** to squeeze honey in perfect hygiene thanks to the anti-drip device.



**6775**

**"SQUEEZER" DISPENSER** in food-grade plastic **300 gr** / **250 cc** to squeeze honey in perfect hygiene thanks to the anti-drip device.



**6901**

**CARDBOARD BOX** for 6 jars of **500 gr** including the jar-separators.



**6921**

**CARDBOARD BOX** for 6 jars of **1000 gr** including the jar-separators.



**6912**

**GIFT-BOX** for 2 jars of **500 gr** in colour printed carton.

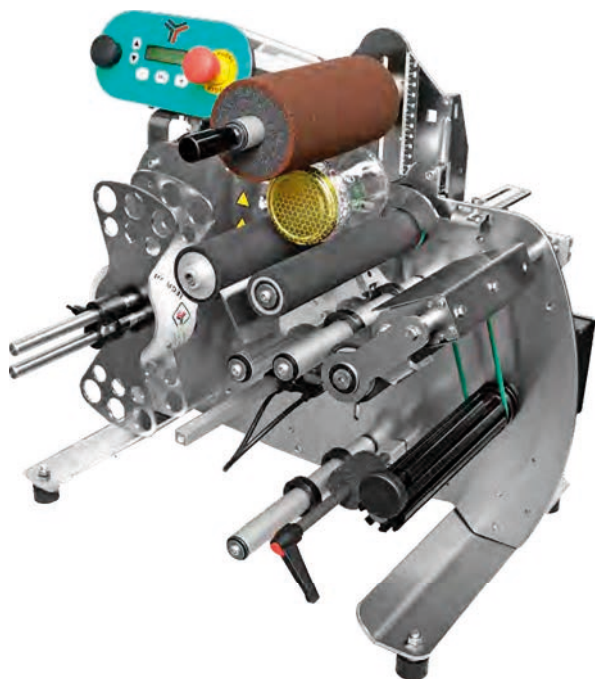


**6913**

**GIFT-BOX** for 3 jars of **500 gr** in colour printed carton.



## HONEY PACKAGING



**6976**

**SEMI-AUTOMATIC LABELLING MACHINE** for application self-adhesive labels for bottles, jars, cylindrical jars.



**6979**

**PNEUMATIC CAPPING MACHINE FOR JARS** it is a sturdy pneumatic machine, small and very performing which eliminates the manual capping of the jars.

Please contact [service@legaitaly.com](mailto:service@legaitaly.com) communicating jar and capsule size to check compatibility.

**SMALL GLASS JAR**  
with twist-off cap.



**6939**

50 gr / 41 cc capacity - Height 49 mm, Ø 42,5 mm (pack of 45).

**6941**

250 gr / 212 cc capacity - Height 85 mm, Ø 66 mm (pack of 28).

**6942**

500 gr / 390 cc capacity - Height 102 mm, Ø 79 mm (pack of 24).

**6943**

1000 gr / 773 cc capacity - Height 135 mm, Ø 96 mm (pack of 20).





## AUTOMATIC FILLING UP LINES



### 6996

**“HONEYPACK” FULLY AUTOMATIC PACKING MACHINE** fully automatic which fills the cylindrical glass jars by means of a **pneumatic** dosing machine with a tolerance of  $\pm 3$  gr. The HONEYPACK machine is composed of:

1. Motorised rotating loader for continuous feeding of jars.
2. Pneumatic dosing head.
3. Automatic magnetic feeder of the “twist-off” capsules.
4. Automatic capper with capsules.
5. Automatic labeling machine with self-adhesive roll labels.
6. Plan for collecting the jars after labeling.

### 6996S

**“HONEYPACK” HP5** electrical dosing machine. **Rather than a pneumatic dosing head, here you get an electrical machine.** The other parts of the machine are the same of ref. 6996.



# WAX PROCESSING

Bee wax is secreted by worker bees in the form of flakes. Bees use wax to build cells of their honeycomb, where honey and pollen are also deposited. The wax is recovered from the old frames and then will serve to prepare new wax sheets. The extraction of the wax can be made by merging with the use of **solar wax melters** or **steam ones** through the use of presses or in a water bath or in boiling water. Important tools for working the wax are the wax melters, solar or steam, and other tools such as **moulds**, **foundation embossing machines** or **sterilizers**.

STEAM WAX MELTERS	110
SOLAR WAX MELTERS	111
STERILISERS, WAX MELTING TANKS AND TRAYS	113



# WAX PROCESSING





# WAX PROCESSING

## STEAM WAX MELTERS



**7085**

**GAS BURNER** for the heating of the steam wax melters **VAPOR 15** and **VAPOR 30** (removable legs).



SUPER DADANT  
30  
BROOD DADANT  
15

**7080**

**STEAM WAX MELTER "VAPOR 15"** in stainless steel, complete with collection tank 410x600x620 mm. The wax completely melts by means of the steam generated by the boiling water and flows out into the plastic tray provided.



SUPER DADANT  
60  
BROOD DADANT  
30

**7082**

**STEAM WAX MELTER "VAPOR 30"** in stainless steel, complete with collection tank 800x600x620 mm. The wax completely melts by means of the steam generated by the boiling water and flows out into the plastic tray provided.



SUPER DADANT  
30  
BROOD DADANT  
15

**7090**

**STEAM WAX MELTER "ELEKTRA 15"** it is the electrified version of the VAPOR 15 which in the basic version is heated by a large gas stove. The electric heating with 2000 W resistance allows it to be used even indoors because it does not generate carbon monoxide.



SUPER DADANT  
60  
BROOD DADANT  
30

**7092**

**STEAM WAX MELTER "ELEKTRA 30"** in stainless steel with double basket and thermostated electric resistance 3000 W.



SUPER DADANT  
8  
BROOD DADANT  
4

**7075**

**STEAM WAX MELTER "CILINDRIC VAPOR"** in stainless steel sheet. The basket can hold up to 55 dm<sup>3</sup> of cappings.





## SOLAR WAX MELTERS

The external structure is made up of a molded container in **expanded polypropylene**, a material that has exceptional insulating properties and capable of withstanding the high temperatures that are obtained inside the waxing machine through exposure to sunlight. On the removable lid there is a 4 mm thick plexiglass plate which acts as the tempered glass mounted on the superior class solar waxers. The external structure is placed on a special support, in drawn stainless steel, with an inclination of 15°.



**7110**

**BIG SOLAR WAX MELTER "POLY"** in expanded polypropylene. The melted wax collection tank is made of stainless steel and holds up to 10 lt - 410x610x340 mm.



**7112**

**SMALL SOLAR WAX MELTER "POLY"** in expanded polypropylene. The melted wax collection tank is made of stainless steel and holds up to 2 lt - 350x390x320 mm.



**7120**

**SMALL SOLAR WAX MELTER** in single wall galvanized sheet. The double glass-chamber is mounted on a 650x650 mm metal tubular frame, hinged to the body and with an opening handle. The whole interior is made of stainless steel.



**7130**

**2-IN-1 SOLAR WAX MELTER - UNCAPPING TRAY**  
Thanks to this product, the beekeeper with a single purchase can take home both a functional solar wax melter and an uncapping tray. In the solar wax melter version, it is equipped with a perforated tray that holds the impurities and a large collection tray of the melted wax. The glass lid has two side handles for an easy and comfortable grip. Made of food grade stainless steel, it has a double wall with an insulated cavity so as not to disperse the accumulated heat and accelerate the melting of the wax. By changing the angle of the front legs thanks to the practical side knobs, the solar wax melter quickly becomes an uncapping tray. The uncapping tray has a wooden crosspiece with a slot where it is possible to place the uncapping knife while processing the frames.



# WAX PROCESSING

## SOLAR WAX MELTERS



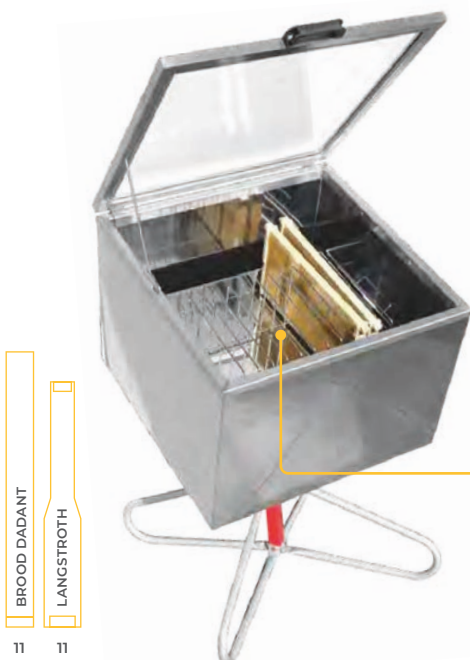
**7150**

**SOLAR WAX MELTER "SOLARIS INOX"** double-walled insulated stainless steel, with swivel support - 700x700 mm.



**7170**

**LARGE SOLAR WAX MELTER "SOLARIS"** with glass mounted on a metal profile frame 1000x1000 mm with insulation of expanded polystyrene in the cavity, made of stainless steel.



**7150HS**

**SOLAR WAX MELTER "SOLARE SOLARIS"** with increased height in stainless steel sheet which allows the confining of the frames in a standing position inside the wire support. The wax immediately flows into the bowl, not soaking the esuvia that remains dry on the frame - 700x700 mm.

**7150H600**

**WIRE SUPPORT FOR FRAMES** for wax melter "Solare Solaris" with increased height (ref. 7150HS).



## SOLAR WAX MELTERS



**7460**

**TRAY 5000 gr / 6 lt** in stainless steel to collect wax for the solar wax melter (ref. 7150) - 530x162x100 mm.



**7461**

**TRAY 3500 gr / 4 lt** in stainless steel to collect wax for the small solar wax melter (ref. 7120) - 530x162x65 mm.



**7160300**

**TRAY 13 lt** in stainless steel to collect wax for the solar wax melter (ref. 7170) - 810x205x130 mm.

## STERILISERS, WAX MELTING TANKS AND TRAYS



**7250**

**FOUNDATION MOULD WATERCOOLED** with stainless steel structure and silicone dies cooled by water circulation - **Dadant** 420x260 mm.



**7412**

**WAX MELTING TANK 25 LT** double wall stainless steel with thermostated electric heating and manual temperature control 30/120° C. **The cavity contains 20 lt.**



**7411**

**WAX MELTING TANK 70 LT** double wall stainless steel with thermostated electric heating and manual temperature control 30/120° C. **The cavity contains 50 lt.**





# WAX PROCESSING

## STERILISERS, WAX MELTING TANKS AND TRAYS



Support is not included.

### 7405

**WAX STERILIZER 500 kg** triple wall stainless steel with thermal insulation and thermostatted electric heating. The wax sterilizer is formed by a cylindrical container with three concentric walls. In the cavity between the first and the second wall, there must be put the diathermic oil, which is heated by the electrical resistances mounted on the bottom and allows to obtain temperatures higher than 120°C, necessary for the sterilization of the wax. The electrical resistors have absorption of 3000W. Before sterilizing the wax contained in the container, it is necessary to ensure that it is all melted, so you must first place the thermostat of the electrical resistance on a value of about 80°C. Only when all the wax is melted should the thermostat be brought to the temperature of 120°C and the mass be left at this temperature for 30 minutes, after which the wax can be considered sterilized and the temperature set on the thermostat scale should be lowered to 75°C for further processing. In the gap between the second and third walls there is a special insulating material that prevents heat loss. The internal bottom is conical, with central opening closed by a large honey gate for the total discharge of wax at the end of processing. On the vertical wall, raised with respect to the bottom, there is the wax gate.



### 7360093

**CLEANING PRODUCT** for the machine of the production of wax foundations in 5 kg tank.



### A91200605

**SPECIAL DIATHERMIC OIL** for double walled tank and mixers, to obtain 120°C temperature.



### 7457

**STAINLESS STEEL TRAY** for liquid wax, with handles - 2,5 lt / 260x200x50 mm.

### 7458

**STAINLESS STEEL TRAY** for liquid wax, with handles - 7,5 lt / 400x320x60 mm.



## ROYAL JELLY AND POLLEN

**Royal jelly** and **pollen** can be considered two beehive products. **Pollen** is collected by the bee that takes it to the beehive where it is stored by worker bees and covered with honey to avoid contact with the air. Over the time the pollen harvesting technique has evolved and today there are special **traps** that collect it before it enters the beehive.

**Royal jelly**, secreted by worker bees and also known as the queen's food, is a substance lightly sugary that can be sucked in by using special vacuum cleaners.



VACUUM SUCKING MACHINE	116
ROYAL JELLY	116
JARS AND BOXES	116
POLLEN DRIERS	117

## ROYAL JELLY AND POLLEN





## ROYAL JELLY AND POLLEN

### VACUUM SUCKING MACHINE



The pneumatic vacuum sucking machine is used to suck royal jelly from the domes with the depression technique, generated by a small vacuum pump and then transfer it directly to the collection vessel by means of a tube with a cannula.

**8000**

**"SUTTORGEL" VACUUM SUCKING MACHINE** for harvesting royal jelly with a single-phase electric motor - 220 V.

**8002**

**"SUTTORGEL" VACUUM SUCKING MACHINE** for harvesting royal jelly with electric motor battery power supply - 12 V.

### ROYAL JELLY



**8010**

**MANUAL BOTTLING MACHINE** for packing royal jelly. In stainless steel, adjustable between 0 and 20 cc which allows a fast and precise filling of small jars. It can also be used for the packaging of honey having the same viscosity or density of royal jelly. Through the movement of a lever, the product is sucked out of the hopper and drained in calibrated quantities into the jar located below the discharge nozzle.

### JARS AND BOXES



**8042**

**SMALL JAR IN YELLOW GLASS** for royal jelly, 10 gr capacity with screw cap.



**8050**

**SMALL PLASTIC SPOON** for royal jelly.



**8060**

**SMALL CARTON BOX** for royal jelly jar.



**8065**

**SMALL POLYSTYRENE BOX** for royal jelly jar.



**8070**

**SMALL JAR IN YELLOW GLASS** with dropper. For liquid propolis, 15 cc.





## POLLEN DRIERS



**8230**

**ELECTRIC POLLEN DRIER** made in stainless steel with 10 pollen trays included (same as ref. 6705).



**8230300**

**POLLEN TRAY** in stainless steel for pollen drier (ref. 8230).



**8240930**

**STAINLESS STEEL MESH BOTTOM DRAWER** for the pollen drier (ref. 8240).

## 15 AND 30 DRAWERS

**8240L**

**PROFESSIONAL POLLEN DRIER** inside the structure a stainless steel frame is placed, fitted with articulated wheels and holding **15 stainless steel mesh bottom drawers 500x500 mm** for the pollen. In this way, drawers can be filled outside the drier and then re-introduced all at a time into the cabinet.  
*The technical data can be obtained from the description of the small warming cabinet (ref. 6715L) from which it is derived.*

**6710A1**

**PROFESSIONAL POLLEN DRIER** with **30 pollen trays on 2 trolleys**.

*The technical data can be obtained from the description of the warm cabinet (ref. 6710L) from which it is derived.*



**8240900**

**DRAWER TROLLEY** for the pollen drier.









## DIDACTICS

**Books, posters, educational and informative material:** everything you need to know the beekeeping world and go into a world full of charm by learning many news and curiosities day by day.



BOOKS IN ITALIAN	120
STICKERS	120
PHOTOGRAPHIC MATERIAL	120

## DIDACTICS







## BOOKS IN ITALIAN



**7500**

**"LE API"** A. Contessi

**7510**

**"APICOLTURA ALL'ABBAZIA DI BUCKFAST"** P. Adam

**7560**

**"APICOLTURA TECNICA E PRATICA"** A. Pistoia

## STICKERS



**7920**

**PLASTIC STICKY LABEL "APE FELICE"** in transparent plastic screen-printed in three colors - 90x80 mm.

**7922**

**PLASTIC STICKY LABEL "APE FELICE" (MEDIUM SIZE)** in transparent plastic screen-printed in three colors - 190x155 mm.

**7960**

**SELF-ADHESIVE LABEL "MIELE ITALIANO" (ITALIAN HONEY)** for honey glass jars - 105x60 mm.

## PHOTOGRAPHIC MATERIAL



**7910**

**PHOTOGRAPHIC KIT OF FRAMES FOR DIDACTIC BEEHIVE** set of 6 brood frames and 5 super frames. Plastic cards that exactly represent what a beekeeper finds when opening a beehive: these are magnificent photos of frames well covered by bees. There is also the frame with the queen, a frame with royal cells and the side honeycombs with stocks of honey and pollen. The kit contains both the photos of the brood and super frames. The cards must be applied on both sides of a frame by means of drawing pins or double-sided tape.

**7911**

**PHOTOGRAPHIC KIT OF FRAMES FOR DIDACTIC BEEHIVE** set of 10 brood frames and 9 super frames.



## PHOTOGRAPHIC MATERIAL



**7881E**

POSTER "WHAT THE WORKER BEE DOES"  
600x900 mm.



**7882E**

POSTER "HONEYCOMB AND BEESWAX"  
600x900 mm.



**7883E**

POSTER "POLLEN AND HONEY"  
600x900 mm.



**7884E**

POSTER "THE FORAGER BEE"  
600x900 mm.



**7886E**

POSTER "FROM THE EGG TO THE BEE"  
600x900 mm.



**7980**

POSTER IN 4 COLOURS ON COATED PAPER (IT)  
700x1000 mm.



**7987**

POSTER "THE BEE'S WORLD" (IT)  
700x1000 mm.



**7990**

HONEY BEE LIFE CYCLE CHART (IT)  
850x600 mm.

# ALPHABETICAL INDEX OF PRODUCTS

<b>A</b>		<b>FULL DIAMETER HONEY STRAINER</b> ..... 87	
ACCESSORIES AND IRON HARDWARE FOR BEEHIVES ....	17	<b>G</b>	
ACCESSORIES FOR EXTRACTORS .....	81	GAS BURNER FOR WAX MELTER .....	110
ACCESSORIES FOR HONEY PUMPS .....	95	GATES FOR HONEY .....	84
ADDITIONAL GRIDS FOR EXTRACTORS .....	82	GLOVES .....	46
AETHINA TUMIDA TRAPS .....	35	GRAFTING TOOL .....	24
ANGLE SCREWS .....	18	GRID FOR POLLEN COLLECTOR .....	32
ANTI-VARROA .....	33	<b>H</b>	
API-BIOXAL .....	35	HEAT SHIELD FOR SMOKERS .....	28
API LAVANDA .....	30	HIVE CONNECTING WEDGE .....	19
<b>APIARY</b> .....	27	HIVE HANDLES .....	20
APISOLIS ELECTRONIC VAPORIZER .....	30	HIVE SPRING FASTENER .....	19
APIVAR .....	35	HIVE TOOLS .....	31
<b>B</b>		HIVE-LIFTERS .....	36
BACK NUTS .....	84	HONEYCOMBS COLLECTION .....	36
BACKING FOR HIVE TOOL .....	19	HONEYCOMBS HANDLING .....	36
BAIT FOR AETHINA TUMIDA'S TRAP .....	35	HONEY DRIERS .....	100
BALANCE KIT FOR EXTRACTORS .....	81	<b>I</b>	
BEE BRUSH .....	31	INNER COVER .....	10
BEE ESCAPE .....	22	<b>J</b>	
BEEHIVE STAND .....	18	J LEG FOR EXTRACTORS .....	81
BEEHIVES .....	10	JARS FOR ROYAL JELLY .....	116
BLENDERS .....	91	JARS WITH DROPPER .....	116
BOOKS IN ITALIAN .....	120	JUTE FOR SMOKER .....	30
BOTTLING MACHINE FOR ROYAL JELLY .....	116	<b>L</b>	
BOTTOM METAL TRAYS .....	17	LABELS .....	120
BRANDING IRON FOR MARKING BEEHIVES .....	18	LEVEL INDICATOR FOR HONEY PUMPS .....	95
BUCKETS FOR HONEY .....	105	LID FOR RECTANGULAR CONTAINER .....	36
<b>C</b>		LIDS FOR EXTRACTORS .....	82
CAGES FOR QUEEN BEES .....	25	LIQUID FOR ELECTRONIC VAPORIZER APISOLIS .....	30
CALIBRATION FOR THE REFRACTOMETER .....	99	LIQUIFIERS FOR HONEY .....	98
CAPPING MACHINE FOR JARS .....	107	<b>M</b>	
CAPPINGS HANDLING .....	57	MANUAL CAPPING PRESS .....	57
CAPPINGS SQUEEZER .....	57	MANUAL DE-BOXER .....	49
CARDBOARD BOXES .....	106	MANUAL DRIVES FOR EXTRACTORS .....	82
CARTON BOX FOR ROYAL JELLY .....	116	MANUAL RADIAL EXTRACTORS .....	64
CELL CUPS .....	25	MANUAL TANGENTIAL EXTRACTORS .....	61
CHARACTERS FOR BEEHIVES .....	18	MANUAL TANGENTIAL/RADIAL EXTRACTORS .....	67
<b>CLOTHING</b> .....	37	MATING BEEHIVES .....	24
CONTINUOUS WAX - HONEY SEPARATOR .....	57	MEASUREMENT TOOLS .....	99
<b>D</b>		MESH VEILS .....	38
DIATHERMIC OIL .....	114	METAL CORNER .....	19
<b>DIDACTICS</b> .....	119	METAL EYELETS .....	13
DISPENSER FOR HONEY .....	106	METAL SUPPORT FOR RIPENERS .....	87
<b>E</b>		MOTORISED RADIAL EXTRACTORS .....	71
ELECTRIC CABLE .....	98	MOTORISED TANGENTIAL EXTRACTORS .....	69
ELECTRIC DE-BOXER .....	56	MOTORISED TANGENTIAL/RADIAL EXTRACTORS .....	75
ENTRANCE BLOCKER FOR TRANSHUMANCE .....	17	<b>N</b>	
ENTRANCE REDUCERS FOR BEEHIVES .....	20	NET FOR POLLEN COLLECTION .....	32
EXTRACTOR'S CAGES .....	81	NUC BOX .....	12
EXTRACTOR'S MOTORS .....	68	NUC BOX FEEDER .....	12
<b>EXTRACTORS FOR HONEY</b> .....	59	NUTRITION .....	35
<b>F</b>		<b>O</b>	
FILLING MACHINES .....	104	OBSERVATION BEEHIVES .....	12
FILLING UP LINE .....	108	OUTER FLAT COVER FOR BEEHIVES .....	10
FITTINGS FOR EXTRACTORS .....	84	OUTPUT AUTOMATIC CONVEYOR .....	55
FOUNDATION MOULD .....	113		
FRAME GRIP .....	18		
FRAME SPACERS .....	19		
FRAMED MESH FOR BEEHIVE .....	18		
FRAMES .....	13		
FRAMES HOLDER FOR UNCAPPING TRAYS .....	48		





<b>P</b>			<b>T</b>	
PACKAGING .....	103		TERMINAL "U" SHAPED FOR HONEY PUMPS .....	95
PAIL HOLDER .....	98		TOP FEEDERS .....	21
PAINT FOR BEEHIVES .....	17		TOP 2 MOTOR BARS .....	83
PARTITIONS .....	16		TRAYS FOR POLLEN DRIER .....	117
PHOTOGRAPHIC KIT FOR DIDACTICS .....	120		TRAYS FOR TROLLEY BARROW FOR SUPERS .....	50
PIPES FOR HONEY PUMPS .....	95		TRAYS FOR WAX COLLECTION .....	113
PLASTIC NUMBERS .....	18		<b>TREATMENT FOR HONEY</b> .....	93
PLASTIC SPOONS FOR ROYAL JELLY .....	116		TROLLEY BARROW FOR DADANT SUPERS .....	50
PLASTIC TAP FOR INNER COVER .....	10		TROLLEY BARROW FOR MANUAL DE-BOXING FRAMES ..	50
PNEUMATIC FRAME EJECTOR AND RECEIVER .....	52			
POLLEN AND PROPOLIS COLLECTION .....	32		<b>U</b>	
POLLEN COLLECTOR'S TRAP .....	32		<b>UNCAPPING</b> .....	47
POLLEN DRIERS .....	117		UNCAPPING FORKS .....	51
POSTER .....	121		UNCAPPING KNIVES .....	50
PROFESSIONAL LINE, CLOTHING .....	42		UNCAPPING MACHINES .....	51
PROFESSIONAL RADIAL EXTRACTORS .....	79		UNCAPPING TRAYS .....	48
PROFESSIONAL RIPENERS .....	89			
PROTECTION SHEET FOR BEEHIVES .....	19		<b>V</b>	
PUMPS FOR HONEY .....	94		VAPORIZER FOR OXALIC ACID .....	33
			VASELINE GREASE .....	33
<b>Q</b>			VEGETABLE PELLET SMOKER .....	30
<b>QUEEN BEE BREEDING</b> .....	23		VENOM COLLECTION .....	33
QUEEN CELL HOLDER FRAME .....	25			
QUEEN EXCLUDERS .....	16		<b>W</b>	
QUEEN MARKING KIT .....	25		WARMING CABINETS .....	96
QUEEN MARKING POLISH .....	25		WAX FOUNDATIONS .....	14
			<b>WAX PROCESSING</b> .....	109
<b>R</b>			WAX STERILIZER .....	113
RAW MESH FOR BEEHIVE .....	18		WHITE LINE, CLOTHING .....	40
RECTANGULAR CONTAINER .....	36		WIRE CRIMPER .....	14
REFRACTOMETERS .....	99		WIRE EMBEDDER .....	14
RESISTANCE FOR ELECTRONIC VAPORIZER APISOLIS .....	30		WIRE FOR WIRING .....	14
ROTATING LOADER FOR FILLING MACHINES .....	105		WIRE UNROLLER .....	14
ROUND TINS .....	105		WORKSHOP TABLE .....	98
<b>ROYAL JELLY AND POLLEN</b> .....	115			
ROYAL JELLY VACUUM MACHINE .....	116		<b>Y</b>	
RUBBER BALANCE KIT FOR EXTRACTORS .....	81		YELLOW LINE, CLOTHING .....	38
RUNNER FOR HIVE ENTRANCE .....	20			
			<b>Z</b>	
<b>S</b>			ZERO RIPENERS .....	88
SCRAPER FOR QUEEN EXCLUDER .....	17			
SCREW FOR BEEHIVE HANDLES .....	20			
SCREW WITH WING NUT .....	19			
SHOVEL FOR BLENDERS .....	92			
SMOKE HOLDER .....	30			
SMOKERS .....	28			
SOLAR WAX MELTERS .....	111			
SPARE BELLOWS FOR SMOKERS .....	28			
SPARE KIT FOR CALIBRATION OF THE REFRACTOMETER ...	99			
SPARE MESH BAGS FOR RIPENERS .....	91			
SPARE PARTS FOR EXTRACTORS .....	81			
SPARE PARTS FOR RIPENERS .....	89			
SPARE SMOKER CAN .....	28			
SPATULA .....	31			
SQUEEZER DISPENSER .....	106			
STAINLESS STEEL DRUM .....	106			
STAINLESS STEEL RIPENERS .....	86			
STEAM WAX MELTERS .....	110			
STOCKING STRAINERS .....	90			
STRAINERS FOR HONEY .....	89			
SUMP TANKS .....	99			
SUPERS (DADANT) .....	10			
SWARM CATCHERS .....	30			
SWARM ENTICER CREAM .....	30			

# GENERAL TERMS AND CONDITIONS

LEGA S.r.l. Costruzioni Apistiche with its registered office at via Maestri del Lavoro, 23 - 48018 Faenza - Italy registered on the Company's register with the Chamber of Commerce of Ravenna under n° 001403-"REA" (economic Administrative Index) n° 84122, VAT n° IT 00043230390, is owner of the website: [www.legaitaly.com](http://www.legaitaly.com).

The following general terms and conditions are an integral part of all our supply contracts, even when orders are taken by telephone, verbally, by fax or via e-mail. Any contract by and between the company LEGA S.r.l. Costruzioni Apistiche and any of its customers shall be intended as formally entered into and perfected with the acceptance of the order by LEGA S.r.l. Costruzioni Apistiche. This acceptance shall be implicit and automatic unless otherwise communicated to the customer in any manner. By placing an order, the customer implicitly accepts these general sale and payment terms and conditions.

## PRICES

Prices are to be intended for goods delivered ex-factory, with packing charged at cost. The prices that will be published from time to time, replace those applied previously and are subject to availability of products and raw materials. Product images in this catalogue are indicative and not binding.

## ORDERS

Orders sent to Lega S.r.l. should be complete in all their parts and report product codes as contained in this catalogue. In case of non-availability of any of the products ordered, Lega S.r.l. shall notify the customer as soon as possible.

## PAYMENT

All payments to Lega S.r.l. shall be made as follows:

- A) Advance payment by means of bank transfer. Reason for payment must include the order number and date in addition to the full name of the person who actually placed it.
- B) By Credit Card (service available online, on a secure server of our bank). We accept all major cards (Visa, MasterCard).
- C) Pay pal indicating the e-mail address [ordini@legaitaly.com](mailto:ordini@legaitaly.com).
- D) Bank receipt to be agreed with the administration office.

## DELIVERY AND BILLING

All the goods are shipped with an accompanying invoice and will be issued by LEGA S.r.l. Costruzioni Apistiche at the time of shipment. To this end it is essential to communicate a valid VAT number and / or tax code. It will not be possible to make any change to the invoice after issued. Shipments shall be made by a carrier chosen by LEGA S.r.l. Costruzioni Apistiche. Shipping charges are due in any case, and are to be paid by the customer, even if goods that have been regularly ordered are returned to the sender. Any return charges to LEGA S.r.l. Costruzioni Apistiche's warehouse, shall be paid by the customer.

## WHAT TO DO ON RECEIPT OF GOODS

Upon delivery of the goods, the customer is required to check:

- A) That the number of packages delivered corresponds to what is indicated in the transport document.
- B) That the packaging is intact and not altered even in the closing tapes.
- C) In case of tampering and / or breakages, the customer must immediately contest the shipment and / or delivery by writing "I ACCEPT WITH RESERVE" by adding the motivation described in as many details as possible and by placing your signature on the bulletin.
- D) The customer must then report any damage within seven days of receipt of the goods, sending attachments to the report photographs documenting the damage found.
- E) Once the delivery receipt has been signed, the customer will not be able to make any objection regarding the external characteristics of what delivered.

## WARRANTY

All products sold by LEGA S.r.l. Costruzioni Apistiche are covered by a 24 months warranty. In order to receive warranty service, the customer must keep and store the invoice or consignment note. In such cases, the customer may contact LEGA S.r.l. Costruzioni Apistiche's After-sales staff by sending an email to [service@legaitaly.com](mailto:service@legaitaly.com) or however report any defects to LEGA S.r.l. Costruzioni Apistiche's After-sales staff returning the product in its original packaging (complete in all its parts, with any document and accessories such as instruction manuals and the similar) no later than 15 days from date of receipt of the product. Return shipping changes are the responsibility of the customer. The guarantee is applicable to products that present defects of conformity and/or malfunctionality, and on condition that the same product was used correctly, in accordance with its intended use. The guarantee will not cover products which have been modified and/or repaired by the customer without the prior written consent of LEGA S.r.l. Costruzioni Apistiche. Should it appear that the defect cannot be attributed to lack of conformity of the product, all costs of verification and fixing incurred by LEGA S.r.l. Costruzioni Apistiche shall be charged to the customer.

## COMPLAINTS

Any complaints must be notified to LEGA S.r.l. Costruzioni Apistiche within 15 days from the date of receipt of the goods. No complaints will be accepted after this period of time.

## JURISDICTION

Subject to any applicable Consumer Protection provisions laid down by law, any dispute shall be referred to the exclusive jurisdiction of the court of Ravenna.









Updated March 2023

The images are also indicative and the articles may undergo any changes deriving from manufacturing needs.







**Lega S.r.l.**

Via Maestri del Lavoro, 23 • 48018 Faenza (RA) • ITALY

Tel. +39 0546 26834 • Fax +39 0546 28279 • [info@legaitaly.com](mailto:info@legaitaly.com)

**[WWW.LEGAITALY.COM](http://WWW.LEGAITALY.COM)**

